

BULLETIN OF
WILLIAM JEWELL COLLEGE

FOUNDED 1849

LIBERTY, MISSOURI

CATALOG

SERIES XXX

APRIL 15, 1933

No. 8

ANNOUNCEMENTS FOR THE YEAR

1933-1934



Accredited by the North Central Association of Colleges and Secondary Schools.
William Jewell College is also approved by the Association of American Universities.

PUBLISHED BI-MONTHLY BY THE COLLEGE

Entered April 2, 1909, at Liberty, Mo., as second-class matter under act of Congress of July 16, 1894. Acceptance for mailing at special rate of postage provided for in Section 1103, Act of October 3, 1918, authorized on July 2, 1918.

William Jewell College Calendar

1933-1934

SEPTEMBER							OCTOBER							NOVEMBER						
Su	Mo	Tu	We	Th	Fr	Sa	Su	Mo	Tu	We	Th	Fr	Sa	Su	Mo	Tu	We	Th	Fr	Sa
					1	2	1	2	3	4	5	6	7				1	2	3	4
3	4	5	6	7	8	9	8	9	10	11	12	13	14	5	6	7	8	9	10	11
10	11	12	13	14	15	16	15	16	17	18	19	20	21	12	13	14	15	16	17	18
17	18	19	20	21	22	23	22	23	24	25	26	27	28	19	20	21	22	23	24	25
24	25	26	27	28	29	30	29	30	31					26	27	28	29	30		
DECEMBER							JANUARY							FEBRUARY						
Su	Mo	Tu	We	Th	Fr	Sa	Su	Mo	Tu	We	Th	Fr	Sa	Su	Mo	Tu	We	Th	Fr	Sa
					1	2		1	2	3	4	5	6					1	2	3
3	4	5	6	7	8	9	7	8	9	10	11	12	13	4	5	6	7	8	9	10
10	11	12	13	14	15	16	14	15	16	17	18	19	20	11	12	13	14	15	16	17
17	18	19	20	21	22	23	21	22	23	24	25	26	27	18	19	20	21	22	23	24
24	25	26	27	28	29	30	28	29	30	31				25	26	27	28			
MARCH							APRIL							MAY						
Su	Mo	Tu	We	Th	Fr	Sa	Su	Mo	Tu	We	Th	Fr	Sa	Su	Mo	Tu	We	Th	Fr	Sa
				1	2	3	1	2	3	4	5	6	7			1	2	3	4	5
4	5	6	7	8	9	10	8	9	10	11	12	13	14	6	7	8	9	10	11	12
11	12	13	14	15	16	17	15	16	17	18	19	20	21	13	14	15	16	17	18	19
18	19	20	21	22	23	24	22	23	24	25	26	27	28	20	21	22	23	24	25	26
25	26	27	28	29	30	31	29	30						27	28	29	30	31		
JUNE							JULY							AUGUST						
Su	Mo	Tu	We	Th	Fr	Sa	Su	Mo	Tu	We	Th	Fr	Sa	Su	Mo	Tu	We	Th	Fr	Sa
					1	2	1	2	3	4	5	6	7				1	2	3	4
3	4	5	6	7	8	9	8	9	10	11	12	13	14	5	6	7	8	9	10	11
10	11	12	13	14	15	16	15	16	17	18	19	20	21	12	13	14	15	16	17	18
17	18	19	20	21	22	23	22	23	24	25	26	27	28	19	20	21	22	23	24	25
24	25	26	27	28	29	30	29	30	31					26	27	28	29	30	31	

William Jewell College Calendar

1933-1934

FALL TERM opens Wednesday, September 6, 1933.

Registration and physical examination of Freshmen, Wednesday and Thursday, September 6 and 7.

Registration of Upper Classmen, Friday, September 8.

Freshman Tests, Friday, September 8.

A fee of \$1.00 will be charged for giving these tests at any other time.

Class work begins Monday, September 11 at 7:50 a. m.

Examinations, Monday, Tuesday, and Wednesday, November 27, 28 and 29.

Fall Term ends Wednesday, November 29, 4 p. m.

Thanksgiving Holidays, November 30 to December 4, 7:50 a. m.

WINTER TERM begins Monday, December 4, 1933.

Registration, Monday and Tuesday, December 4 and 5.

Class work begins Wednesday, December 6, 7:50 a. m.

Christmas recess begins Friday, December 15, 4 p. m.

Work resumed, Tuesday, January 2, 7:50 a. m.

Examinations, Wednesday, Thursday, and Friday, March 7, 8, and 9.

Winter Term ends, March 9, 4 p. m.

SPRING TERM begins Saturday, March 10.

Registration previous to 4 p. m., March 12.

Class work begins Monday, March 12, 7:50 a. m.

Examinations, Wednesday, Thursday, and Friday, May 30, 31, and June 1.

Spring Term ends, Friday, June 1.

Commencement programs, Monday and Tuesday, May 28 and 29.

For failure to matriculate and be classified within the period set therefor, an extra fee of \$3.00 will be charged and in addition to this, an extra fee of \$3.00 will be required for late payment of regular fees. These extra fees will be reduced to \$2.00 each for new students.

Full credit will not be allowed for a term's work for those who enter more than two weeks late.

BOARD OF TRUSTEES

ATWOOD, JUDGE FRANK E.	Jefferson City, Missouri
AMICK, E. E.	Nevada, Missouri
BROWN, S. J.	Elmhurst Building, Kansas City, Missouri
BROWNING, W. P., jr.	Olathe, Kansas
FITCH, W. M.	Boatman's Bank Building, St. Louis, Missouri
GRIFFITH, W. H.	Griffith Shoe Company, St. Joseph, Missouri
GRAHAM, J. P.	Graham Lumber Company, St. Louis, Missouri
*GREENE, DR. J. P.	Santa Ana, California
*JAMES, J. C.	James China Company, Kansas City, Missouri
JOHNSON, W. D., <i>President</i>	2512 Fidelity National Bank Bldg. Kansas City, Missouri
JONES, MINETRY, jr.	Jones Hat Company, St. Joseph, Missouri
*MAJOR, John S., <i>Secretary-Treasurer</i>	First National Bank, Liberty, Missouri
MACKEY, J. C.	Clarksville, Missouri
MARTIN, W. W.	Masonic Orphans' Home, St. Louis, Missouri
MARTIN, T. D.	Martin Motor Company, Springfield, Missouri
PILLSBURY, E. S.	1827 Pine Street, St. Louis, Missouri
PRINCE, CHESTER J.	7019 Dale Ave. St. Louis, Missouri
REYNOLDS, J. B., <i>Vice-President</i>	Kansas City Life Insurance Bldg., Kansas City, Missouri
RAY, A. T.	Gallatin, Missouri
PROCTOR, Rev. L. M.	Independence, Missouri
STORTS, COM P.	Slater, Missouri
TRIMBLE, JUDGE FRANK H.	Liberty, Missouri
TRIMBLE, E. G.	Insurance Building, Kansas City, Missouri
TUTT, DR. A. M.	Liberty, Missouri
WEBER, REV. PAUL.	Jefferson City, Missouri
WILHITE, HUGH.	Excelsior Springs, Missouri

ADMINISTRATION

JOHN F. HERGET, <i>President</i>	Liberty, Missouri
ALLEN J. MOON, <i>Dean and Registrar</i>	Liberty, Missouri
*JOHN S. MAJOR, <i>Treasurer</i>	Liberty, Missouri
H. B. EARLY, <i>Assistant Treasurer and Cashier</i>	Liberty, Missouri
J. C. ARMSTRONG, <i>Librarian</i>	Liberty, Missouri
JOHN E. DAVIS, <i>Business Manager</i>	Liberty, Missouri
A. G. BYRNS, <i>Secretary of Faculty</i>	Liberty, Missouri
*HOMER S. HUFF, <i>Field Representative and Personnel Secretary</i>	Liberty, Missouri
HARVEY J. RAY, <i>Manager, William Jewell Press</i>	Liberty, Missouri
*Dr. J. P. Greene, Mr. J. C. James and Mr. John S. Major died during the year.	
*Mr. Huff resigned Feb. 1, 1933.	

FACULTY

JOHN F. HERGET, A.M., LL.D., President.

*JOHN PRIEST GREENE, A.M., D.D., LL.D., President-Emeritus.

ANCIENT LANGUAGES

ALLEN J. MOON, A.M., LL.D., (Howard College). Dean and Registrar.
Head of Department and Professor of Latin. Graduate work,
the University of Virginia and the University of Chicago.

FREDERICK M. DERWACTER, Ph.D., (Chicago).
Professor of Greek.

BIBLE

H. I. HESTER, Th.D., (Southern Baptist Theological Seminary).
Head of Department and Professor of Bible and Religious Educa-
tion.

BIOLOGY

CLARENCE JEROME ELMORE, Ph.D., (Nebraska).
Head of Department and Professor of Biology.

HELEN CHURCHILL, A.B., (Kansas University).
Instructor in Biology.
Graduate work, University of Kansas and University of Chicago.

CHEMISTRY

GEORGE F. WEIDA, Ph.D., (Johns Hopkins).
Head of Department and Professor of Chemistry.

FRANK G. EDSON, A.M., (University of Colorado).
Associate Professor of Chemistry.
Graduate work, Colorado University.

EDUCATION

J. B. SULLIVAN, Ph.D., (George Washington University).
Head of Department and Professor of Education.

THURSTON ISLEY, M.Ed., (University of Kansas).
Associate Professor of Education.
Graduate work, University of Kansas.

ENGLISH AND PHILOSOPHY

JOHN PHELPS FRUIT, Ph.D., (Leipzig).
Head of Department and Professor of English Literature, and of
Philosophy.

*Died March 10, 1933.

- P. CASPAR HARVEY, A.M., (William Jewell).
Professor of English Composition.
One summer's study, the University of Chicago.
- VIRGINIA D. RICE, A.M., (University of Kansas).
Instructor in English.
Graduate work, University of Kansas.
- W. PREWITT EWING, A.B., (William Jewell).
Instructor in English and Coach of Debate.
Graduate work, University of Kansas.

HISTORY AND POLITICAL SCIENCE

- W. HOLT SMITH, Ph.D., (Chicago).
Head of Department and Professor of History and Political Science
- ULMA R. PUGH, A.M., (Baylor).
Associate Professor of History.
Graduate work, University of Iowa.

MATHEMATICS AND ASTRONOMY

- B. EDWARD DENTON, A.M., (George Peabody College).
Head of Department and Professor of Mathematics.
- JOSEPH VAN TRUMP, A.B., (William Jewell).
Instructor in Mathematics. Graduate work, University of Missouri.

FRENCH AND GERMAN

- CONSTANTINE BILA, Docteur de l' Université de Paris.
Head of Department and Professor of French and German.
- CLARENCE G. CHRISMAN, A.M., (University of Kansas).
Assistant Professor of French.
One year's study in Universities of Madrid and Paris.

SPANISH

- ARTHUR GROVER BYRNS, A.M., (University of Kansas).
Head of Department and Professor of Spanish.
- CLARENCE G. CHRISMAN, A.M., (University of Kansas).
Assistant Professor of Spanish.
One year's study in Universities of Madrid and Paris.

MUSIC

DAVID GROSCH.

Head of Department and Professor of Music.

Taught in Chicago Musical College, Bush Conservatory, and was Dean of Conservatory of Music, Baker University. Studied voice with Adolph Schulze of Berlin, piano with John Petrie Dunn of Edinburgh, oratorio with Dr. Charles Allum of London, opera with Hermann Devries of Chicago, and composition with Samuel DeLange of Stuttgart, Germany.

PHYSICAL EDUCATION

ROBERT EARL BOWLES, A.B., (William Jewell).

Head of Department and Athletic Director. Two summers' work at the University of Wisconsin and one summer at Lake Geneva, Wisconsin, in Physical Education.

WILLIAM N. COLLINS, B.S., (Missouri).

Athletic Coach. One summer's work in Illinois Coaching School.

PHYSICS

JOHN E. DAVIS, A.B., (William Jewell).

Head of Department and Professor of Physics. Graduate work, University of Chicago.

JOSEPH VAN TRUMP, A.B., (William Jewell).

Instructor in Physics. Graduate work, University of Missouri.

SOCIAL SCIENCE

C. R. HOWD, PH.D., (California).

Head of Department and Professor of Social Sciences.

ULMA R. PUGH, A.M., (Baylor).

Associate Professor of Economics.

Graduate work, University of Iowa.

STANDING COMMITTEES OF THE FACULTY

Athletics: MESSRS. BOWLES (*Chairman*), COLLINS, DAVIS, and HUFF.

Chapel Attendance: MISSES RICE and CHURCHILL, and MESSRS. VAN TRUMP, ISLEY, (*Chairman*) and HUFF.

Chapel Exercises: The PRESIDENT (*Chairman*), and MESSRS. GROSCH, HESTER, and SMITH.

Registration Committee: MESSRS. BOWLES, ELMORE, HOWD, The DEAN (*Chairman*), and SULLIVAN.

Faculty Advisors of Student Council: MESSRS. ELMORE, FRUIT (*Chairman*), and HOWD.

Faculty Advisors for Freshmen: BYRNS, DAVIS, The DEAN (*Chairman*), and SMITH.

Fraternities: MESSRS. DAVIS (*Chairman*), EWING, and BYRNS.

Religious Activities: MESSRS. HOWD, DERWACTER, HESTER (*Chairman*), and SMITH.

Curriculum: MESSRS. SMITH, FRUIT, The DEAN (*Chairman*), and SULLIVAN.

Student Publications and Faculty Representatives on the Board of Control: MESSRS. BYRNS, (*Chairman*), HOWD, and PUGH.

Catalog: MESSRS. DENTON, ISLEY, FRUIT, and The DEAN (*Chairman*).

Library: MESSRS. ARMSTRONG (*Chairman*), SULLIVAN, and HOWD.

Music and Dramatics: MESSRS. FRUIT, GROSCH (*Chairman*), and MISS RICE.

Debate: MESSRS. EDSON, EWING, HARVEY (*Chairman*), and PUGH.

Dormitories: MESSRS. ISLEY, ELMORE (*Chairman*), DAVIS, HESTER, and The DEAN.

Discipline: The PRESIDENT (*Chairman*), MESSRS. DENTON, HUFF, HESTER, and The DEAN.

Publicity: The PRESIDENT, and MESSRS. DAVIS (*Chairman*), SULLIVAN, HARVEY, HESTER, and RAY.

University Scholarships and Fellowships: MESSRS. HARVEY, (*Chairman*), SMITH, and WEIDA.

Committee on Improvement of Instruction: MESSRS. FRUIT, The DEAN (*Chairman*), SULLIVAN, and WEIDA.

LOCATION

William Jewell College is located at Liberty, Missouri, fifteen miles from Kansas City. Liberty is on the main lines of the C. B. & Q., the C. M. & St. P., C. R. I. & P. Railroads. A concrete road, Federal Highway No. 69, and State Highway No. 10, runs through Liberty to Kansas City.

HISTORICAL SKETCH

It was soon after the organization of the Missouri Baptist General Association in the year 1835 that the initial steps were taken for the establishment of an institution of higher learning for young men and in particular for candidates for the Christian ministry. No definite action was taken until 1843, when Dr. William Jewell of Columbia, Missouri, made to the General Association the conditional offer of ten thousand dollars in lands as a nucleus for the building and endowment of a college. The offer was not accepted until 1848. A charter was granted by the legislature and approved by the Governor, February 27, 1849.

In accordance with the terms of this charter the subscribers to the building and endowment funds met in Boonville for the purpose of selecting a location and fixing upon a name for the institution. After an animated contest, the town of Liberty—the county seat of Clay County—was selected, and it was unanimously decided that the name of the institution should be William Jewell College.

The College was opened to students (in the old Liberty Academy) on January 1, 1850, with Rev. J. S. Dulin as Principal and Professor of Ancient Languages, and Rev. T. F. Lockett as Professor of Mathematics. Dr. Dulin served as Principal until the close of the session of 1851-52. Then on account of financial embarrassment the school survived the year 1852-53 as a private enterprise.

In the meantime the foundation had been laid for the building now known as Jewell Hall, and by the summer of 1853 the structure had advanced towards completion so far as to admit of occupancy and use. It was not finally completed until 1858. The building was begun under the immediate superintendence of Dr. Jewell, who died in Aug., 1852, from the effects of exposure to the intense heat of that summer.

In 1853, the trustees resuming full control, called to the presidency Rev. R. S. Thomas, D. D., from a professorship in the State University at Columbia. This administration continued until the summer of 1855, when new financial trouble caused the suspension of the College for the next two years.

The College reopened in the fall of 1857 under the presidency of Rev. William Thompson, LL. D. Dr. Thompson was a graduate of the University of Edinburgh, and was a scholar of distinction and one of the most brilliant orators of his day. His administration lasted until June, 1861, when it was deemed prudent to suspend operations until, by the return of peace, the conditions of the country should be more favorable for the prosecution of academic pursuits. There was, however, a school carried on in the college building during the years of the war whenever it was practicable.

Not until 1867 was it thought safe to reopen the institution. In June of this year, Rev. Thomas Rambaut of Louisville, Kentucky, was called to the presidency. He was a graduate of Trinity College, Dublin, and was a man of wide experience in the management of educational enterprises. The first year of his incumbency was devoted to the reorganization and the increasing of endowment.

The reopening was on September 28, 1868, with Dr. Rambaut, President; R. B. Semple, Professor of Latin and French; A. F. Fleet, Professor of Greek and German; John F. Lanneau, Professor of Mathematics; James R. Eaton, Professor of Natural Sciences. Dr. Rambaut's administration ended in the spring of 1874 on account of ill health.

The office of President remained vacant until the summer of 1892. In the meantime the affairs of the College were administered by the Faculty, acting through a chairman. Professor William R. Rothwell was chairman from 1873 to June, 1883, and Professor James G. Clark from that date until June, 1892.

The financial affairs of this period were in the hands of Lewis B. Ely of Carrollton, who had been a most ardent friend of the College. But previous to his election as financial agent in 1887, the Rev. W. Pope Yeaman, D. D., was appointed Chancellor of the College and for two years succeeded in enlarging the endowment.

In June, 1892, the productive endowment had been largely increased, several buildings erected, one of which, Ely Hall, was named in honor of the financial agent, and several members added to the Faculty. Mr. Ely was also president of the Board of Trustees until his death in June, 1897.

In June, 1892, Dr. John Priest Greene, Pastor of the Third Baptist Church of St. Louis, was elected President of the College. Under his administration the number of students was greatly increased, a library with a capacity of 100,000 volumes was erected, also a modern dormitory and a most excellent science building. Many new departments of instruction were added. The crowning glory of Dr. Greene's presiden-

cy of twenty-eight years was that he held the College to the prime purpose of its establishment, namely, the thorough literary and scientific training of young men for Christian service.

On January 1, 1920, Dr. Greene resigned his office as President, and was succeeded by Dr. David Jones Evans, who for many years had been Dean of Biblical Literature and Religious Education. Dr. Evans served until September 1, 1921, when he resigned to become Pastor of the First Baptist Church of Kansas City, Missouri. Dr. Greene was again requested to act as President until a suitable person could be found for the place.

On March 29, 1923, the Trustees of the College elected as President Dr. Harry Clifford Wayman of Louisville, Kentucky. Dr. Wayman was a professor in the Southern Baptist Theological Seminary. He served until June 11, 1928.

On July 3, 1928, Dr. John F. Herget was selected by the Trustees to the presidency. Dr. Herget is an alumnus of William Jewell. He came to the college as its president from a pastorate of twenty-five years at Ninth Street Baptist Church, Cincinnati, Ohio.

CHOOSING A COLLEGE

The choice of a college is an important matter to every person seeking an education, but it is especially so to students having definite professional aims in view.

Professional schools, especially those of engineering and medicine, impose rigorous preliminary requirements upon their students. *The first two years of college work nearly always determine the ability and fitness of a student for the line of study he has in mind.* If this work is done in a poor school or poorly done in a good school, the student will suffer a serious handicap in pursuing his advanced studies. The significance of this latter statement will be evident to any medical student who has attempted to enter any of the standard medical colleges. For example, the Harvard Medical School seldom accepts more than fifty per cent of the applications from Harvard University itself and thirty per cent of those from other colleges and universities. The same might be said of the medical departments of some of our neighboring universities. It is therefore evident that graduation from a large university itself does not insure admission to the medical department of that institution.

What then should a student do to make sure that he will not be denied first class training after doing his pre-medical work? *The answer is this—he must not only do his pre-medical work in well equipped laboratories and under competent instructors but he must acquire high standing*

in his classes. The dull or lazy student will find it difficult to gain admission to a good medical college even if he is a graduate of a standard university.

OUR AIM

William Jewell College is a Christian Liberal Arts College. As such it is not its function to create specialists. This is the business of graduate, professional, and technical schools. Nor is it even the primary function of the Liberal Arts College to prepare young people for a business or a professional career. Of course, we offer pre-professional courses, but our primary purpose is to prepare young people for right living.

A Christian Liberal Arts College should therefore do two things for its students:

(1) It should train them for membership in a Christian social order. This is a social order based upon the ideals and teachings of Jesus Christ.

It should teach them how to become rich; leading them to appreciate the supremacy of spiritual as against material values, and helping them to understand that the rich man in material things is he who has enough for himself and something to share with others, whether his income be one thousand or one million dollars a year, and that that man is poor indeed who has only enough for himself, however large his income may be.

It should seek to build an aristocracy; not an aristocracy of blood nor of wealth and least of all an aristocracy of intellect, but an aristocracy of the pure in heart, the noble in soul, the humble in mind, the unselfish in spirit, and the serviceable in life.

(2) It should train them for leadership in a Christian social order.

The importance of right leadership in business, political, social, or religious life cannot be overestimated. The greatest need among all nations today is an adequate social leadership. From among the young people in our colleges today must come the future leaders. To train them to comprehend, create, control, and direct a Christian social order is the primary business of a Christian Liberal Arts College.

To achieve these ends is the fixed purpose and constant aim of William Jewell College.

STANDING OF WILLIAM JEWELL

William Jewell College is a member of the North Central Association of Colleges and Secondary Schools, and is also approved by the Association of American Universities.

CAMPUS AND EQUIPMENT

Grounds

The College campus consists of one hundred acres of wooded upland situated just within the northern and eastern corporation limits of the City of Liberty. The buildings are located on the "Old Hill," surrounded with historic associations.

The athletic field of twenty acres is at the foot of the College Hill. It contains a quarter-mile and a 220 yard straightaway cinder track, and a football field. Tennis courts are provided in the vicinity of the gymnasium.

Buildings and Equipment

Jewell Hall

Jewell Hall is the oldest of the college buildings on "The Hill." It was built in the early fifties, Dr. Jewell, the founder of the College, himself superintending the work. It is a brick structure containing the recitation and lecture rooms of language, literature, and history. The music department is housed on the third floor.

Marston Science Hall

The science hall is located at the southern extremity of "The Hill" and contains the class rooms and laboratories of biology, chemistry, and physics as well as some allied subjects. Most of the first and second floors are occupied by the department of chemistry. The third floor is given over to physics and mathematics and the fourth floor contains the museum and the department of biology. This building is of modern fireproof construction, and is valued at \$225,000.00. It is especially designed for science work and is a model of its kind.

Marston Science Hall was named in honor of Doctor S. W. Marston who had a great interest in the development of the physical and biological sciences. Mr. Edgar L. Marston, son of Doctor Marston, contributed very liberally to the erection and equipment of the building.

The John Gano Memorial Chapel

The friends of the College, realizing the great inconvenience suffered for years because of a lack of an adequate room for daily assemblies, have recently given in cash and pledges sufficient money to build a new assembly hall. The principal donor to this much needed building on "The Hill" was a friend in Kansas City. The building is named "The John Gano Memorial Chapel" in honor of the Reverend

John Gano, the great grandfather of this donor. This distinguished minister of the gospel established the first Baptist Church in New York City, served as chaplain in Washington's army and enjoyed the most intimate friendship of that great American. The building is now completed, being located at the extreme north end of the quadrangle and facing south. It seats about 1,100 persons. The administrative offices are also in this building.

Gymnasium

The new Brown Gymnasium was completed in 1929 at a cost of \$150,000.00. It is located on the drive just east of Gano Chapel, and north of the site of the old gymnasium.

The building measures 102 by 150 feet, and has a main auditorium that will seat 2,000 persons. It is equipped with a swimming pool, measuring 20 by 75 feet. In the front of the building are offices for the director of physical education and coach of athletics. On the second floor in the front of the building there is a corrective gymnasium providing facilities for wrestling, boxing, volley ball, calisthenics, etc. In connection with this gym there are two hand-ball courts. Other features are: a hall for the girls; a room equipped with showers, for visiting teams; class rooms for instruction in physical education; ample locker rooms and shower baths; rooms equipped for hot steam baths; modern ventilating system, and other features which make this one of the finest gymnasiums in this section of the country.

New Ely Hall

New Ely Hall, the men's dormitory, is a large, three-story brick and stone building on the college hill. It is a beautiful, thoroughly fire-proof structure offering modern accommodations to over a hundred men. The appointments provide all the modern conveniences of showers, abundant lavatory equipment, electric lights, etc. The large and comfortable lobby with its piano, lobby furniture, and fire-places provides a fine recreational center. See pages 18 and 84 for prices.

Special care is given to the preparation of food, and to the maintenance of a home-like atmosphere.

Sheets and bed covering must be furnished by the students.

To reserve a room, send \$5.00 to H. B. Early, Assistant Treasurer, William Jewell College, Liberty, Missouri. This amount will be credited on the room rent.

Designate first and second choice, if any, by room number as shown on plat, page 83.

Old Ely

Old Ely Hall, situated in the midst of the central buildings of the campus, is an historical and beautifully ivy-covered three-story brick structure. In this building are the offices of the *Student* and *Tatler*, central offices of the debate squad, and the women's retiring room.

Melrose Hall

Mrs. H. I. Hester is Supervisor and Hostess of this dormitory, a beautiful modern home which accommodates fifty-two girls. Melrose Hall stands on a wooded hill-top overlooking the country, north and east of Liberty. It contains, besides dormitory facilities, the Y. W. A. room, the T. N. T. local Sorority room, two Kitchenettes for cooking and for pressing, a laundry room, an infirmary, a trunk room, and a reserved suite for guests. A large living room and a music room offer means for social intercourse. Two girls occupy a room. There is a tiled bathroom between each two bedrooms.

All non-resident girls will be expected to live in the College dormitory. Permission to live elsewhere must be secured from President Herget.

Girls will furnish their own towels, sheets, pillow slips, bed covering, window curtains, table napkins and napkin rings, pressing irons, and grills.

For convenience in bringing furnishings, the following dimensions are given: dresser 40x20 inches, highboy 36x20 inches, desk 40x30 inches, single beds, sheets 50x90 inches, pillows 27x18 inches.

To reserve a room, the student should send \$5.00 to H. B. Early, Assistant Treasurer. This will be credited on room rent.

See pages 18 and 84 for prices.

The Library

The Library occupies a handsome modern building, the gift of Mr. Andrew Carnegie, and other friends of the College. It has 39,600 accessioned volumes classified according to the Dewey system and fully catalogued. In the large reading room may be found encyclopedias, dictionaries, and such modern works as are needed for reference. The reading room receives regularly about 140 periodicals selected so as to help students in the various courses of their college work. At least sixty of the best magazines are bound and are accessible to the students. The library is especially rich in the stock of bound magazines covering the last third of a century.

The library and reading room are open from 7:45 a. m. until 6:00 p. m. except Saturday afternoons, and on Tuesday and Thursday evenings from 7:00 to 9:45.

The Spurgeon library of 7,000 volumes occupies a large section. The records of the Missouri Baptist Historical Society are in the library. Professor H. I. Hester is custodian of these records.

The Power Plant

All of the buildings on the campus are heated by steam from a central power plant which is valued at \$40,000.00. This adds to the comfort of those living in the dormitories as it eliminates all coal dust and smoke from their rooms.

The Co-operative Book Store

The Co-operative Book Store is situated in the south end of the basement of John Gano Memorial Chapel. Books and other school supplies may be purchased here at reasonable prices.

The store is conducted under the supervision of the Faculty of the College. Its earnings are used to improve the campus.

The William Jewell Press

The William Jewell Press, established in 1914, has become interwoven into the warp and woof of the life of the college and the welfare of a considerable portion of the student body is affected by it. It is the busiest spot on the campus. At present a number of young men and young women are earning part of their college expenses in this printing shop.

This establishment has grown with the college. It now occupies most of the ground floor of the John Gano Memorial Chapel building, requiring about four thousand square feet of floor space for its type cabinets, presses, imposing tables, working quarters, and office space.

In addition to its function as a means of subsistence for students while in college, it has a positive educational and preparatory capacity as well, though it is not listed in the curriculum of the college. It teaches the student a trade. Many students who have learned the fundamentals of the printing trade at the William Jewell Press are now instructors of printing in high schools and technical schools throughout the country. School boards seek the young men who have received their training here for their vocational shops.

The Press started in 1914 under the management of Prof. Ward H. Edwards, with a small bindery as an adjunct of the library, employing one student. The next year a small press was installed for the printing of the forms used by the college and another student was hired. In 1916 another press was donated by Mr. T. O. Sims, of St.

Joseph, who also furnished about \$150.00 worth of type. That same year a fund of \$3,500.00 was provided by M. C. Treat, Pasadena; W. D. Johnson, Kansas City; C. Q. Chandler, Wichita; E. S. Pillsbury, St. Louis; and G. M. Smith, Kansas City. Pictures of these men hang on the walls of the Press office.

The Press has been under the management of Mr. Harvey J. Ray since 1921. Experienced printers wishing to attend William Jewell should apply to the manager if they wish employment.

COST OF ATTENDING WILLIAM JEWELL COLLEGE ALL TUITION AND FEES PAYABLE IN ADVANCE

Tuition, per term.....	\$50.00
Tuition, per term, for ministerial students and sons and daughters of ministers	25.00
Tuition, per term, for students taking one subject.....	15.00
Tuition, per term, for students taking two subjects.....	30.00
If more than two subjects are taken full tuition will be charged.	
Gymnasium fee, per term (all students).....	2.00
Physical examination fee, per year	2.00
Caution fee	5.00

The caution fee will be refunded to the student on his withdrawal from college, less whatever charges may be against him for damage to college property.

Student activity fee, per term.....	4.00
-------------------------------------	------

This fee will be apportioned as follows: In the fall term, \$2.00 for athletics, \$1.00 for the Student, \$1.00 for music. In the winter term, \$2.00 for athletics, \$1.00 for the Student, and \$1.00 for the library. In the spring term, \$2.00 for forensics, \$1.00 for athletics and \$1.00 for the library.

The Student activity fee is payable in cash and is non-returnable. It cannot be included in any scholarship or in any other form of gifts or credit that does not provide the actual cash.

LABORATORY AND SPECIAL FEES, PAYABLE IN ADVANCE

Laboratory fee in chemistry	\$5.00
Laboratory fee in physics.....	2.50
Laboratory fee in biology, except 228, 228a, 335	2.50
Laboratory fee in biology, 228 and 228a.....	5.00

Fee in engineering drawing.....	2.50
Education 211, 211a, 213.....	1.00
Geology.....	1.00
Astronomy (fall and winter terms only)	1.00

The diploma fee for graduates is \$5.00.

BOARD AND ROOM

Men—New Ely Dormitory. Rooms, per term, see prices on page 84—
Key deposit \$1.00.

Women—Melrose Dormitory. Rooms, per term, see prices on page 84.

Board in both New Ely and Melrose dining halls is: \$60.00 per term.

The necessary expenses for a student are from \$425.00 to \$475.00 per year. (This includes board and room in the college dormitories.)

LATE ENROLLMENT

On page 3 of this catalog will be found the periods of time set aside for classification and payment of fees for each term of the school year 1933-34.

For failure to matriculate and be classified within the period set therefor, an extra fee of \$3.00 will be charged and in addition to this an extra fee of \$3.00 will be required for late payment of regular fees. These extra fees will be reduced to \$2.00 each for new students.

REFUNDS

Since the college, in good faith, employs its faculty and incurs all of its educational expenses for the year in advance, there can be no refund of any tuition or fees for any reason. And there will be no refund under any circumstances on room rent, but unused portions of advanced payments on board will be returned in cases of protracted illness certified to by an attendant physician.

A refund of 20 cents per meal will be granted to students missing five consecutive meals or more in the dining halls.

REDUCED TUITION

William Jewell College gives reduced tuition to ministerial students and sons and daughters of ministers. To secure reduced tuition each student for the ministry must present either ordination papers or a license to preach or the formal approval of his church.

OPPORTUNITIES FOR SELF-HELP

About two hundred students earn at least a part of their expenses while in college.

There is a demand in Liberty for help in keeping furnaces, waiting tables, carrying papers, house cleaning and various other kinds of odd jobs. A number of students work in stores, garages, printing offices, and restaurants. The college also offers employment to a number of students about the campus and in buildings.

Students wishing employment on the campus should correspond with Professor J. E. Davis, Liberty, Mo. The college has no control of work out in town. To secure such it is necessary for a student to make application in person to those needing help. Mr. Harvey J. Ray, manager of the William Jewell Press, employs a limited number of students, preferably those with experience in the printing business.

LOAN FUNDS AND SCHOLARSHIPS

A loan fund of \$3,000.00 is available for the benefit of students worthy of financial aid. All funds provided by churches or individuals and designated for certain students will be administered according to the wishes of the donors.

Competitive Scholarships

The A. R. Levering Scholarship is awarded to the sophomore making the most satisfactory record, in scholarship, character, and conduct in his freshman year at William Jewell College.

The L. B. Ely Scholarship is awarded to the junior making the most satisfactory record in scholarship, character, and conduct as a sophomore.

The John Siller's Scholarship is awarded to the senior making the most satisfactory record, in scholarship, character and conduct in his junior year.

These scholarships provide full tuition for one year and are awarded by the faculty. They do not include special fees.

The Marston Scholarship yields about \$250.00 annually and is for a William Jewell College Graduate in Brown University. It is open to competition under rules prescribed by the faculty. The scholarship was founded by Mr. E. L. Marston, son of Rev. S. W. Marston, D. D.

Non-Competitive Scholarships

The following scholarships are governed by the College and will be granted to applicants whom the College thinks most worthy of receiving them.

The R. E. Turner, Elizabeth Johnson, Margaret Bryant, Geo. S. Bryant, Pauline Bryant, John L. and Elizabeth Burnham, J. C. Carter, and Rev. John D. Green Scholarships are available to either literary or ministerial students.

The following scholarships are awarded to ministerial students only:

The scholarships, known as the James G. Clark Memorial Scholarship, the W. B. Ballew Scholarship, the W. F. Elliott Scholarship, the Mrs. Mary Elliott Scholarship, the H. W. Gilliam Scholarship, the Mildred Ely Montgomery Scholarship, the Thos. F. Melvin and Wife Scholarship, the William M. Senter Scholarship, the Joint Scholarship of William Anderson Crouch, a Baptist preacher, and Martha Alice Crouch, his wife, and Rev. John D. Green Memorial Scholarship.

Besides these scholarships, there is a scholarship fund maintained by the friends of the College from which needy and worthy students may receive aid.

All students receiving scholarships other than competitive scholarships are expected to live in the college dormitories.

Students pursuing any mode of living not conducive to economy or engaging in extravagant habits will not be given the scholarships.

The Reynolds Fund—Mr. J. B. Reynolds of Kansas City has generously given to the College a large sum of money as an endowment fund. The major portion of the income from this fund is used to assist worthy students preparing for the ministry and missionary service.

Honor Scholarship—This institution participates as a member in the plan of the Missouri College Union, whereby an honor scholarship is offered to one member of the graduating class of each first-class high school or secondary school in the State of Missouri, the same to be awarded on the recommendation and vote of the principal and faculty. This award is made to one who ranks in the upper ten per cent of the class, and who, moreover, has been chosen by the faculty on the basis of physical vigor, qualities of manhood or womanhood, force of character, and leadership.

This scholarship, if and when presented to this institution, within eighteen months following graduation from high school, accompanied by satisfactory recommendations, entitles the holder to an award of \$50.00 in payment of annual tuition and fees. It is honored only in liberal arts and science courses leading to the bachelor's degrees, and is good for one year. This institution invites correspondence or conference concerning this scholarship.

PRIZES

The William M. Fitch Prize—William M. Fitch, '93, offers a \$20.00 gold medal annually to the student who writes the best essay on some specified sociological subject.

The Frank B. Hearne Medal in Chemistry—By the will of Mrs. Roberta Lee C. Hearne of Independence, Missouri, "the Trustees of William Jewell College are directed to purchase annually a medal to cost approximately \$50.00, such medal to be known as the Frank B. Hearne Medal to be awarded annually as a scholarship medal for excellency in the study of chemistry. At the discretion of the Trustees, and with the approval of the recipient, the sum of \$50.00 in gold coin may be awarded. The bequest is in affectionate remembrance of her husband, Frank B. Hearne, whose college education was obtained at William Jewell." This prize will in general be awarded to a member of the graduating class, but in exceptional circumstances may be given to a lower classman.

The Dr. Otto H. Russell Prize—Dr. Otto H. Russell of California offers an award of \$25.00 in gold annually to the student who writes the best thesis on some subject in the field of Bible study. This subject is to be selected by the head of the Department of Bible. The student preparing the thesis must have had at least six term hours of Bible in the College.

Literary Prizes—Annually there are awarded two trophies for the best original prose and poetry written by students. One is the J. P. Fruit Trophy for Poetry and the other the P. Caspar Harvey Trophy for Prose. The awards are announced at Commencement.

The Edward Earle Eubank Medal—In order to stimulate scholarship Dr. Earle Eubank of the University of Cincinnati offers a medal to that member of the graduating class who has the highest scholastic rating for his entire college course. This medal is awarded annually at Commencement time.

DORMITORY REGULATIONS

All boys of the freshman class are required to room and board in New Ely Hall. Exceptions to this rule will be made in case students live in the community or work in town for their board and room. Permission must be obtained from President Herget.

All non-resident girls will be expected to live in Melrose Hall.

Discipline in New Ely Hall is in charge of the superintendent of the dormitories, the matron of the dining hall, and the discipline committee. Discipline in Melrose Hall is in charge of the directress of women and the discipline committee.

If it should become necessary to dismiss a student from a dormitory on account of misconduct, his future relations to the College will be determined by the faculty.

No refund will be made to a student on either board or room if it becomes necessary to dismiss him or her from a dormitory on account of bad conduct, since the money paid by such a student does not meet the expense incurred by such behavior.

REQUIREMENTS FOR ADMISSION AND GRADUATION

HOW TO ENTER WILLIAM JEWELL COLLEGE

Graduation or the equivalent of graduation from a fully accredited high school with not less than 15 specified units will admit a student to William Jewell College without condition. The student should request an officer of the high school to send an official transcript of his entrance credits to the Registrar of William Jewell College, Liberty, Mo. The College prefers to have these credits on its own blanks which the student will find in this college bulletin on the inside of the back cover.

Entrance credits should reach the Registrar before September 1.

Since freshmen, with some exceptions, are required to room and board in the college dormitories, they should select a room early in the summer and reserve it by sending Mr. H. B. Early \$5.00 as part payment on the rent. The positions of rooms may be found on pages 82-83. The prices of rooms may be found on page 84.

After presenting his entrance credits and reserving a room, the student has no other arrangements to make until coming to Liberty, at which time matriculation will be completed.

Students coming from other colleges must bring honorable dismissals. Those wishing to enter later than two weeks after the beginning of a term should correspond with the Registrar before coming to Liberty.

No one is permitted to enter a course of study later than two weeks after class work has begun, unless he can show that he has already done the missing work in a satisfactory manner in an accredited school.

The 15 units required for entrance should be distributed as follows:

English.....	3 units
Foreign Languages	2 units
(both in same language)	
Mathematics.....	2 units
Elected from Academic Subjects (English, Foreign Language, Mathematics, Natural Sci- ences, Social Sciences)	4 units
Elected from other subjects accepted for grad- uation from high school.....	4 units

From the above it will be seen that a minimum of 11 units must be offered from the academic group and not more than 4 from the non-academic.

The student should have an official transcript of his credits sent to the Registrar and receive from him a statement as to the number of units that will be accepted.

A student may also enter William Jewell with twelve units done in an approved senior high school as recommended by the North Central Association of Colleges and Secondary Schools.

A unit of work is the standard unit of the high schools, approved by the Superintendent of Public Schools of Missouri.

A student coming from another college must provide an honorable dismissal from the college last attended, and also a transcript of grades. These credentials should not be presented by the student himself but should be sent directly from the college issuing them.

By permission of the Registrar a student may take not more than two subjects and be listed as a *special student*. For students so listed a special rate of tuition will be charged in addition to registration, caution, and student activity fees.

The College reserves the right to refuse admittance to a student whose high school record or moral life seems to make him unfit for college life.

DEGREE CONFERRED

William Jewell College grants only one degree, namely, the Bachelor of Arts. This degree will be conferred upon students who have satisfied the entrance requirements and have completed 186 term hours of college work and have earned 186 honor points in the manner prescribed under Specific Requirements for Graduation.

Degrees will be designated according to student's major: A. B. in Education, A. B. in Bible, A. B. in Mathematics, etc.

SPECIFIC REQUIREMENTS FOR GRADUATION

PLAN OF MAJORS AND MINORS

1. All college courses are classified in a general way under four groups which, for convenience of reference, will be designated by I, II, III, IV, as follows:

I. Latin, Greek, French, German, and Spanish.

II. Mathematics, chemistry, physics, and biology.

III. History and political science, economics, sociology, philosophy, education, Bible, and advanced English.

IV. All other subjects taught.

2. On entering college a student is required to take in his freshman year the following subjects:

Freshman English, one foreign language, and one subject from either mathematics, physics, chemistry or biology and physical education.

3. Three term hours of hygiene and sanitation are required for graduation and also six hours of Bible, namely, Bible 101a, 102a, 103a.

4. Three term hours of physical education 101, 102, 103, are required of all who enter as freshmen.

5. After completing the freshman work a student must choose one of the fifteen majors and its three prescribed minors as shown in the table of majors and minors (Pages 88-89). A major is nine terms of work in one subject (unless otherwise stated) taken in regular sequence, and of not less than four hours per week. A minor is six terms of work with such exceptions as appear in the table.

All other work necessary to make the 186 hours for graduation is elective.

The maximum amount of credit a student may receive in one department is sixty hours.

6. Any senior having fulfilled all other requirements for graduation with his class except the lack of not more than twelve (12) term hours may, by permission of the Faculty, do this work in absentia, and thereupon be graduated as of his class, *provided he complete this deficiency before February 1st of the following year*. Such a student may participate only in the graduating exercises of the class *following the completion of his work*, but will be graduated as of his own class.

7. A student having completed in William Jewell College the required work for graduation may, with the approval of the Faculty, finish the work for the A.B. degree by one year of satisfactory work

done in an A-grade technical school. (This privilege will not be granted to a student of low scholastic ability or one having more than a normal year's work to complete for graduation.)

8. Students offering three or more years of college work from other institutions must complete their entire senior year's work (not less than 45 hours) in William Jewell College in order to acquire the A.B. degree in this institution.

GENERAL REGULATIONS

CLASSIFICATION

To be classified **Freshman** a student must present 15 units as described on page 23.

To be classified **Sophomore** a student must have at least 36 term hours of college work.

To be classified **Junior**, at least 84 term hours, and as **Senior** at least 132 hours must be presented, and in addition to this there must be at least 84 and 132 honor points respectively to entitle students to these classifications.

In each of these cases the student's work must be of such a kind as to lead to graduation in the normal time.

GRADING, EXAMINATION, AND HONOR POINTS

1. Grades are expressed by the letters A, B, C, D, and F. The first four letters indicate grades ranging in order from 100 per cent down to 60 per cent. F means failure.

2. The grade A entitles a student to three honor points per credit hour. B carries with it two such honor points per hour and C one honor point per hour. No honor points are given for the grade D. In arriving at student averages the grade F is assigned one negative honor point per credit hour, but this is not done when determining a student's classification. 186 honor points are required for graduation.

The number of honor points won by a student determines his scholastic rating.

3. In classes of more than 14 students the number of those receiving a grade of A is limited to 25 per cent of the class. A teacher may disregard this rule, however, provided he limit the number of A grades in his whole department to 25 per cent of the number of students.

4. No student is admitted to examination in a subject in which

the number of his class absences has reached 25 per cent of the total number of recitations.

5. In order to be admitted to a final examination a student must have acquired a class grade of at least D. No second examinations are permitted because of failures, except that a senior may be granted one re-examination as a senior privilege.

6. College students are limited to 18 hours of work per week. Less than 12 hours of work per week may not be carried without the permission of the Registrar.

7. Students are not permitted to drop or exchange a study later than one week after recitations begin, without consent of the Registrar.

8. The College reserves the privilege of omitting courses, the demand for which is not sufficient to justify their being given.

INCOMPLETE WORK

If at the close of any term a student's grade is reported as "incomplete," he must make up the deficiency prior to the examination period of the next following term or a grade of F will be recorded and the student barred from further participation in any course to which the deficiency is a prerequisite.

CORRESPONDENCE

The College will not accept for graduation work done by correspondence from any institution except those of high standing having regularly organized correspondence departments, and then in no greater amount than one-fourth of the number of term hours required for graduation. No credit may be allowed by correspondence toward a major except by consent of faculty upon recommendation of head of department, and not more than 15 hours will be accepted in any one department.

STUDENT CONDUCT

It is assumed that every student matriculating in William Jewell College agrees to conduct himself in a manner conducive to the highest sort of mental and moral development. The faculty reserves the right to send any student home whose habits are considered inconsistent with the ideals of the institution.

Hazing in any form is contrary to the wishes of both the trustees and faculty of the College. The domination by force of one class by another is now regarded by the best colleges and universities as contrary to the spirit of modern education.

CLASS ATTENDANCE

Students are required to attend classes regularly. A grade of zero

will be given for each class absence. This zero grade may be removed by the student's making up the work with the permission of the teacher.

PENALTIES FOR ABSENCES

(a) For a total number of twelve absences from any class or classes or chapel assembly in one term one negative hour shall be assigned.

(b) Each absence on the day immediately before or after a holiday or vacation shall count as three absences.

CHAPEL

All students are expected to attend chapel exercises, which are held on Tuesday, Wednesday, and Thursday at 10:35. This convocation is not only for the purpose of holding religious exercises, but also to hear public announcements and to cultivate the college spirit and good fellowship.

For each 12 unexcused absences from chapel, one negative hour will be given. Excuses from chapel are issued by the Registrar.

PREPARATION FOR PROFESSIONAL SCHOOLS

The best schools of law and medicine require a minimum amount of specific college work for entrance, in addition to graduation from a four-year high school. They also place a particular emphasis upon the quality of this work and also the personality and adaptability of the candidate for admission.

Two years of college work is still the minimum quantitative requirement for entrance to some well approved professional schools, but there is a strong tendency to raise this amount to three years. The medical department of the University of Missouri made this change in 1928-29.

Even after graduation from college, which is required in some institutions, it is not always possible for a student to gain admission to the professional school of his choice. The Harvard Medical School chooses only 125 men out of about 600 qualified applicants. The Yale School of Law bases its selection of candidates upon quality of college record, an aptitude test, and letters of recommendation, in addition to the quantity of preparation.

Students interested in a medical education should secure a pamphlet issued by the Council of Medical Education and Hospital, 535 North Dearborn Street, Chicago, Ill. This booklet contains information about medical schools besides a list of minimum requirements.

For students wishing to do only two years of college work before entering a professional school, the following outlines are recommended:

Suggested pre-professional courses for first two years. Courses for third and fourth years to be arranged.

TWO-YEAR PRE-MEDICAL COURSE

FRESHMAN YEAR

Fall Term		Winter Term		Spring Term	
Gen. Chem.	5 hrs.	Gen. Chem.	5 hrs.	Gen. Chem.	5 hrs.
English	4 "	English	4 "	English	4 "
For. Lang.	4 "	For. Lang.	4 "	For. Lang.	4 "
Biology	5 "	Biology	5 "	Biology	5 "
Total	18 "	Total	18 "	Total	18 "

SOPHOMORE YEAR

Fall Term		Winter Term		Spring Term	
Chemistry	5 hrs.	Org. Chem.	5 hrs.	Org. Chem.	5 hrs.
Histology or Bacteriology	4 "	Physiology or Bacteriology	4 "	Embryology or Botany	4 "
Physics	4 "	Physics	4 "	Physics	4 "
For. Lang.	4 "	For. Lang.	4 "	For. Lang.	4 "
Total	17 "	Total	17 "	Total	17 "

TWO-YEAR PRE-LEGAL COURSE

FRESHMAN YEAR

Fall Term		Winter Term		Spring Term	
English	4 hrs.	English	4 hrs.	English	4 hrs.
History	4 "	History	4 "	History	4 "
Sci. or Math.	5 "	Sci. or Math.	5 "	Sci. or Math.	5 "
For. Lang.	4 "	For. Lang.	4 "	For. Lang.	4 "
Total	17 "	Total	17 "	Total	17 "

SOPHOMORE YEAR

Fall Term		Winter Term		Spring Term	
History	4 hrs.	History	4 hrs.	History	4 hrs.
European Gov.	4 "	Am. Gov.	4 "	Am. Gov.	4 "
For. Lang.	4 "	For. Lang.	4 "	For. Lang.	4 "
World Lit.	4 "	Eng. Lit.	4 "	Shakespeare	4 "
Total	16 "	Total	16 "	Total	16 "

PRE-ENGINEERING COURSE**FRESHMAN YEAR**

Fall Term		Winter Term		Spring Term	
Math.	5 hrs.	Math.	5 hrs.	Math.	5 hrs.
English	4 "	English	4 "	English	4 "
Gen. Chem.	5 "	Gen. Chem.	5 "	Qual. Anal.	5 "
For. Lang.	4 "	For. Lang.	4 "	For. Lang.	4 "
Total	18 "	Total	18 "	Total	18 "

SOPHOMORE YEAR

Fall Term		Winter Term		Spring Term	
Math.	5 hrs.	Math.	5 hrs.	Math.	5 hrs.
Physics	4 "	Physics	4 "	Physics	4 "
For. Lang.	4 "	For. Lang.	4 "	For. Lang.	4 "
Mech. Draw.	4 "	Mech. Draw.	4 "	Mech. Draw.	4 "
Total	17 "	Total	17 "	Total	17 "

These courses may be varied somewhat according to the kind of engineering desired.

PRE-COMMERCE COURSE**FRESHMAN YEAR**

Fall Term		Winter Term		Spring Term	
English	4 hrs.	English	4 hrs.	English	4 hrs.
For. Lang.	4 "	For. Lang.	4 "	For. Lang.	4 "
Math.	5 "	Math.	5 "	Math.	5 "
History	4 "	History	4 "	History	4 "
Total	17 "	Total	17 "	Total	17 "

SOPHOMORE YEAR

Fall Term		Winter Term		Spring Term	
World Lit.	4 hrs.	Eng. Lit.	4 hrs.	Shakespeare	4 hrs.
Economics	4 "	Economics	4 "	Economics	4 "
European Gov.	4 "	Am. Gov.	4 "	Am. Gov.	4 "
For. Lang.	4 "	For. Lang.	4 "	For. Lang.	4 "
Total	16 "	Total	16 "	Total	16 "

DEPARTMENTS OF INSTRUCTION

Courses numbered 100 to 199 are intended primarily for freshmen, 200 to 299 for sophomores, and 300 to 399 for juniors and seniors.

BIBLE

A major in this department must include courses 101a, 102a, 103a, 108, 109, 110, and 231, 232, 233. A minor is any six of the above courses taken in their proper order.

101a. BIBLE HISTORY. The aim of this course is to give the student a knowledge of Bible History. In the fall term attention is given to introductory matters and to the history in the Old Testament through the period of the Judges. Texts: The Bible, a Syllabus for the Study of the Bible—Hester, A Class Book of Old Testament History—Maclear, Library References.

Credit, 2 hours; required for graduation.

Fall term. Two sections: T., Th. at 1:15; W., F. at 11:00. Jewell Hall.

PROFESSOR HESTER.

102a. BIBLE HISTORY. Completing the study of Old Testament History and the interbiblical period. Texts: The Bible, A Syllabus for the Study of the Bible—Hester, A Class Book of Old Testament History—Maclear, Library References.

Credit, 2 hours; required for graduation.

Winter term. Two sections: T., Th. at 1:15; W., F. at 11:00. Jewell Hall.

PROFESSOR HESTER.

103a. BIBLE HISTORY. New Testament History. Texts: The Bible, A Syllabus for the Study of the Bible—Hester, Studies in the New Testament—Robertson, Library References.

Credit, 2 hours; required for graduation.

Spring term. Two sections: T., Th. at 1:15; W., F. at 11:00 Jewell Hall.

PROFESSOR HESTER

108. THE LIFE OF CHRIST. A careful study of the principal events in the life of Christ. Texts: A Harmony of the Gospels—Robertson, The Days of His Flesh—Smith, Library References.

Credit, 4 hours. Freshmen are admitted to this course.

Fall term. T., W., Th., F. at 9:40. Jewell Hall.

PROFESSOR HESTER.

109. **THE APOSTOLIC AGE.** An account of the development of the Church and the spread of Christianity from the ascension of Jesus to the close of the New Testament. Texts: The Bible, The Life and Letters of St. Paul—Smith, Library References.

Credit, 4 hours. Freshmen are admitted to this course.

Winter term. T., W., Th., F. at 9:40. Jewell Hall.

PROFESSOR HESTER.

110. **CHRISTIAN ETHICS.** A careful study of the ethical teachings of Jesus with special reference to their application to present day life. Texts: The Fundamental Virtues—Greene, Christianity and Social Problems—Price, Library References.

Credit, 4 hours. Freshmen are admitted to this course.

Spring term. T., W., Th., F. at 9:40. Jewell Hall.

PROFESSOR HESTER.

231. **HISTORY OF THE CHURCH.** A rapid review of the first Christian Century and the development of the Church through the Reformation. Texts: The History of the Christian Church—Fisher, Library References.

Credit, 4 hours. One course of college history prerequisite.

Fall term. T., W., Th., F. at 8:45. Jewell Hall.

PROFESSOR HESTER.

232. **HISTORY OF THE CHURCH.** Christianity after the Reformation. A rapid survey of Christianity in America. Texts: The History of the Christian Church—Fisher, History of American Christianity—Bacon, Library References.

Credit, 4 hours. One course of college history prerequisite.

Winter term. T., W., Th., F. at 8:45. Jewell Hall.

PROFESSOR HESTER.

233. **CHRISTIAN MISSIONS.** History of missions with special attention to conditions on mission fields today. Introduced by survey of the chief teaching of the non-Christian religions. Texts: The Religions of the World—Grant, The Course of Christian Missions—Carver, Library References.

Credit, 4 hours. One course of college history prerequisite.

Spring term. T., W., Th., F. at 8:45. Jewell Hall.

PROFESSOR HESTER.

311a, 312a, 313a. **NEW TESTAMENT GREEK.** In these courses the student is made familiar with the main differences between classical and the New Testament Greek. One of the gospels

and one of Paul's epistles are read in Greek. Grammar is studied and translation from English into Greek required. (See department of Greek).

Credit, 4 hours each term. Greek 223 (two years of Greek) prerequisite.

Fall, Winter, and Spring terms. T., W., Th., F. at 9:40. Jewell Hall.

PROFESSOR DERWACTER.

141b. **RELIGIOUS EDUCATION.** Organization and administration. Careful study of the Sunday School, Week-Day Religious Education, The Daily Vacation Bible School, and Christian Education in institutions of higher learning. Text: The Organization and Administration of Religious Education—Stout, Library References.

Credit, 2 hours.

Fall term. T., Th. at 2:10. Jewell Hall.

PROFESSOR HESTER.

142b. **RELIGIOUS EDUCATION.** The teaching of Religion. Texts: Outfitting the Teacher of Religion—Snowden, The Art of Jesus as a Teacher—McKoy, Library References.

Credit, 2 hours.

Winter term. T., Th. at 2:10. Jewell Hall.

PROFESSOR HESTER.

143b. **THE EFFICIENT CHURCH.** The place of the efficient church in the community. Texts: The Functioning Church—Burroughs, Public Worship—Pattison, Library References.

Credit, 2 hours.

Spring term. T., Th. at 2:10. Jewell Hall.

PROFESSOR HESTER.

BIOLOGY

Any six courses constitute a minor and any nine a major.

121, 122. **GENERAL ZOOLOGY.** A course dealing with the general principles of biology and giving a general view of all of the animal phyla. Text: College Zoology—Hegner. Fee, \$2.50.

Credit, 5 hours each term. For freshmen.

Fall and Winter terms. Lectures M., T., Th. at 9:40. Laboratory, minimum 4 hours per week. Marston Hall.

PROFESSOR ELMORE AND MISS CHURCHILL.

123. **GENERAL BOTANY.** A brief survey of the plant kingdom with special attention to the Phanerogams. Part of the time is given to a study of local flora and the preparation of an herbarium. Text: Principles of Botany—Bergen and Davis. Fee, \$2.50.

Credit, 5 hours. For freshmen.

Spring term. Lectures M., T., Th. at 9:40. Laboratory, minimum 4 hours per week. Marston Hall.

PROFESSOR ELMORE AND MISS CHURCHILL.

228, 228a. **GENERAL BACTERIOLOGY.** Fundamental principles of Bacteriology, including the relation of bacteria to industries and diseases. Laboratory work is co-ordinated with the principles developed in the lectures, with emphasis upon technique. Typical pathogenic and non-pathogenic bacteria are studied. Text: Bacteriology—Buchanan. Fee, \$5.00.

Credit, 4 hours each term. Biology 121, 122, 123 and chemistry 101a, 102a, 103a prerequisites.

Fall and winter terms. Lectures T., Th. at 11:00. Laboratory M., W. at 2:10. Marston Hall.

MISS CHURCHILL.

230. **BOTANY.** A course in general botany treating of the structure, physiology, and relationships of plants. Text: Principles of Botany—Bergen and Davis. Fee, \$2.50.

Credit, 4 hours. Biology 121, 122, 123 prerequisites.

Spring term. Lectures T., Th. at 11:00. Laboratory, minimum 4 hours per week. Marston Hall.

MISS CHURCHILL.

232. **HISTOLOGY.** A study of the microscopic structure of animal tissues and the methods of histological work. Text: Manual of Normal Histology—Hill. Fee, \$2.50.

Given in alternate years; will not be offered in 1933-1934.

Credit, 4 hours. Biology 121, 122, 123 prerequisites.

Winter term. Lectures M., W. at 11:00. Laboratory, minimum 4 hours per week. Marston Hall.

PROFESSOR ELMORE.

229. **HUMAN PHYSIOLOGY.** A study of the anatomy and physiology of the human body. The laboratory work consists of a study of the gross and microscopic structure of organs of physiological processes. Text: Textbook of Anatomy and Physiology—Williams. Fee, \$2.50.

Given in alternate years; will not be offered in 1933-34.

Credit, 4 hours. Biology 121, 122, 123, 232 prerequisites.

Winter term. Lectures M., W. at 11:00. Laboratory, minimum 4 hours per week. Marston Hall.

PROFESSOR ELMORE.

227. EMBRYOLOGY. A study of embryological development as illustrated in the chick. Lectures deal with the development of germ cells, cleavage of the egg, formation of the principal organs, and the differentiation of tissues in vertebrates. Text: Vertebrate Embryology—Shumway; Laboratory Outlines—Lillie. Fee, \$2.50.

Credit, 4 hours. Biology 121, 122, 123, 229, 232 or 121, 122, 123, 234, 225 prerequisites.

Spring term. Lectures M., W. at 11:00. Laboratory, minimum 4 hours per week. Marston Hall.

PROFESSOR ELMORE.

234. ENTOMOLOGY. An elementary course dealing with the structure, physiology, development, classification, and economic relations of insects. Text: Economic Entomology—Fernald. Fee, \$2.50.

Given in alternate years; will be offered in 1933-1934.

Credit, 4 hours. Biology 121, 122, 123 prerequisites.

Fall term. Lectures M., W. at 11:00. Laboratory, minimum 4 hours per week. Marston Hall.

PROFESSOR ELMORE.

225. COMPARATIVE ANATOMY OF THE VERTEBRATES. A study of the comparative development of the various systems and organs of vertebrate animals, their structure and homologies. The laboratory work consists of a comparative study of Amphioxus, lamprey, dogfish, turtle, and cat. Text: Biology of the Vertebrates—Walter. Fee, \$2.50.

Given in alternate years; will be offered in 1933-34.

Credit, 4 hours. Biology 121, 122, 123 prerequisites.

Winter term. Lectures M., W. at 11:00. Laboratory, minimum 4 hours per week. Marston Hall.

PROFESSOR ELMORE.

333. SYSTEMATIC BOTANY. A study of local flora and the principles of classification of seed plants. Fee, \$2.50.

Credit, 3 hours. Biology 121, 122, 123, 230 prerequisites.

Fall or spring term. Lecture, M. at 9:40. Laboratory, minimum 6 hours per week. Marston Hall.

PROFESSOR ELMORE.

333a. **SYSTEMATIC BOTANY.** A study of local flora and the principles of classification of seed plants. Fee, \$2.50.

Credit, 6 hours. Biology 121, 122, 123, 230 prerequisites.

Fall or spring term. Lecture, M. at 10:35. Laboratory, minimum 12 hours per week. Marston Hall.

PROFESSOR ELMORE.

335. **GENETICS.** A study of the anatomical structures and physiological processes concerned in heredity, and the application of these facts to the transmission of hereditary characters. Text: Genetics—Walter.

Credit, 2 hours. Biology 121, 122, 123 prerequisites.

Fall term. T., Th. at 11:00. Marston Hall.

PROFESSOR ELMORE.

340. **PROTOZOOLOGY.** A study of the structure, physiology, and taxonomy of the Protozoa. Fee, \$2.50. Text: Biology of the Protozoa—Calkins.

Credit, 4 hours. Three years of biology prerequisite.

Fall or spring term. Consultation period, F. at 10:35.

PROFESSOR ELMORE.

The College has an herbarium consisting of about 5,000 specimens collected in thirty-six states and foreign countries. Among the foreign countries represented are India, Palestine, Germany, Belgium, France, and England. Included in the herbarium is a large collection from Wisconsin by Dr. J. S. Douglas and one from Shelby County, Missouri by C. A. Ripley. Plants from India, Palestine, and some from Europe are from W. T. Elmore.

CHEMISTRY

For a major in Chemistry, courses 101a, 102a, 103a, 204, 205, 206, 207, 208, and one other course preferably 309.

Any two years may be a minor. Those pursuing a major or a cognate minor in this department should take mathematics as a prerequisite, or take mathematics at the same time they take up the study of Chemistry.

101a, 102a, 103a. **GENERAL CHEMISTRY AND QUALITATIVE ANALYSIS.** A study of the common substances, elements, and compounds and their behavior. Some qualitative analysis is in-

cluded during latter part of year. There will be two classes; divisions to be arranged from time to time according to the students' ability or attainments. Fee, \$5.00 per term.

Credit, 5 hours each term. First course in Chemistry. Open to freshmen.

Fall, winter, and spring terms. Lectures M., W., F. at 9:40 and 11:00. Laboratory periods to be arranged; one M., W. afternoons, and one Monday mornings. Marston Hall.

PROFESSOR WEIDA.

204. **THEORETICAL CHEMISTRY.** The first term will be devoted to chemical laws and principles that could not be included in 101a, 102a, 103a. This course will precede or accompany all advanced Chemistry, and will indicate the fitness of the student to continue with Chemistry. Text: Second Year Chemistry—Chapin. Fee, \$5.00.

While this is primarily a class-room course with calculations and problems, some laboratory work may be done to illustrate the applications of theory to chemical analysis—at extra hours in the afternoon.

Credit, 5 hours. Chemistry 101a, 102a, 103a prerequisites.

Fall term. Lectures T., Th., F. at 11:00. Laboratory periods T., Th. at 2:10. Marston Hall.

PROFESSOR EDSON.

205, 206. **ORGANIC CHEMISTRY.** A first course. See course 313, fall term, for advanced course to follow these courses. Text: Conant or Williams; Adams and Johnson Manual.

Students who begin chemistry after freshman year and who are taking major in chemistry may make arrangements to take courses 207 and 208 at same time as 205 and 206. Such students should take the course on the electron given by Professor Edson (also listed physics). Fee, \$5.00 per term.

Credit, 5 hours each term. Chemistry 101a, 102a, 103a, 204 prerequisites.

Winter and spring terms. Lectures T., Th., F. at 11:00. Laboratory periods T., Th. at 2:10. Marston Hall.

PROFESSORS WEIDA AND EDSON.

207, 208. **QUANTITATIVE ANALYSIS.** Text: Quantitative Analysis—Fales and Calculations of Quantitative Analysis—Hamilton and Simpson.

Students who began chemistry after freshman year and who are taking major in chemistry may make arrangements to take courses 207

and 208 at same time as 205 and 206. Such students should take the course on the Electron given by Professor Edson (also listed physics). Fee, \$5.00 per term.

Credit, 5 hours each term. One course in college mathematics (must be taken in conjunction with this course if not before). Chemistry 101a, 102a, 103a, 204 prerequisites.

Winter and spring terms. Lectures T., Th. at 1:15. Laboratory periods M., W., F. at 2:10. Marston Hall.

PROFESSOR EDSON.

All preceding required toward a major.

309. PHYSICAL CHEMISTRY.

Credit, 5 hours. Chemistry 101a, 102a, 103a, 208 prerequisites, Fee, \$5.00.

Fall term. Lectures M., W., F. at 1:15. Laboratory periods T., Th. at 2:10. Marston Hall. Offered in alternate years.

PROFESSOR EDSON.

313. ORGANIC CHEMISTRY — ORGANIC PREPARATIONS.

Credit, 5 hours. Chemistry 101a, 102a, 103a, 204, 205, 206 prerequisites. Fee, \$5.00.

Fall term. Lectures T., Th., at 1:15. Laboratory periods M., W., F. at 2:10. Marston Hall. Offered in 1933.

PROFESSOR EDSON.

315. SPECIAL METHODS OF QUANTITATIVE ANALYSIS.

For those who have had at least two years of college chemistry. The details will be arranged and varied somewhat according to needs; ordinarily will include analysis of water, milk, and foods. Fee, \$5.00.

Credit, 5 hours. Chemistry 101a, 102a, 103a, 207, 208 prerequisites.

Winter term. Lectures and laboratory periods to be arranged with instructor. Marston Hall.

PROFESSOR EDSON.

316. INTRODUCTORY CHEMICAL MICROSCOPY. Use of microscope and its accessories for the detection of chemical substances, textiles, and paper fibres. Fee, \$5.00.

Credit, 5 hours. Open only to juniors and seniors who have had Chemistry 101a, 102a, 103a.

Spring term. Lectures, W., F. at 1:15. Laboratory periods to be arranged with instructor. Marston Hall.

PROFESSOR EDSON.

The laboratory work for all except seniors is to be done at the hours named in connection with the course; at which time the professor will be available, and present with the students working under his direction. This leaves other hours available for their other appointments and work.

Note—The laboratory is open on Monday morning for extra student work; but not on Saturdays except for student assistants and employees of the department.

Two elementary sciences may usually be arranged for in the same year without conflict.

Students preparing for engineering should take at least two years of physics and two years of mathematics in addition to chemistry. Those expecting to study medicine should take at least one year of physics and one, or preferably two, in biology in addition to a minimum of three years of chemistry.

Students preparing for graduate work in chemistry should take two years of German, two years of French, and mathematics through the calculus.

ECONOMICS

201, 202. **INTRODUCTION TO ECONOMICS.** The purpose of this course is to acquaint the student with the major features and problems of economic life.

Credit, 4 hours each term. For sophomores.

Fall and winter terms. T., W., Th., F. at 1:15. Jewell Hall.

PROFESSOR HOWD.

203. **LABOR PROBLEMS.** A study of labor conditions in the United States as they have developed within the past half century.

Credit, 4 hours. Prerequisite, Economics 202 or consent of instructor.

Spring term. T., W., Th., F. at 1:15. Jewell Hall.

PROFESSOR HOWD.

302. **EUROPEAN ECONOMIC HISTORY.** The backgrounds and development of modern economic institutions as these have developed in western Europe.

Credit, 4 hours. Prerequisite, Economics 202. May be taken simultaneously with 201 with consent of the instructor.

Fall term. T., W., Th., F. at 8:45. Jewell Hall.

PROFESSOR PUGH.

304. BUSINESS ORGANIZATION AND MANAGEMENT. A study of the science of business, forms of business organization, and the financing and management of corporations.

Credit, 4 hours. Prerequisite, Economics 202. May be taken simultaneously with 202 with the consent of the instructor.

Winter term. T., W., Th., F. at 8:45. Jewell Hall.

PROFESSOR PUGH.

305. MONEY AND BANKING. A study of the origin, kinds, functions and systems of money and banking, with special emphasis upon the Federal Reserve System.

Credit, 4 hours. Prerequisites, Economics 202 or consent of instructor.

Spring term. T., W., Th., F. at 8:45. Jewell Hall.

PROFESSOR PUGH.

EDUCATION

Courses 211, 213, 321, 321a, 322, 318, 318a, 314, 315, 316, 320, 320a and 319 form a major in education. Twenty-four hours in education form a minor. The following courses are recommended for a minor: 211, 213, 314, 315, 318, 318a, and 321, 321a.

211. GENERAL PSYCHOLOGY. It is the purpose of this course to give a general treatment of the main elements, facts, and principles of psychology. Inherited traits, instincts, reflexes, emotions, central nervous systems, and the various mental processes are a few of the topics studied in the course. Freshmen may be admitted to this course. Fee, \$1.00.

Credit, 4 hours.

Fall term. Three divisions: M., T., W., Th. at 1:15, and T., W., Th., F. at 7:50 and 9:40. Jewell Hall.

PROFESSOR SULLIVAN.

211a. GENERAL PSYCHOLOGY. This course is a continuation of General Psychology 211.

Credit, 4 hours. Education 211 prerequisite.

Winter term. Three divisions: M., T., W., Th. at 1:15, and T., W., Th., F. at 7:50 and 9:40. Jewell Hall.

PROFESSOR SULLIVAN.

213. EDUCATIONAL PSYCHOLOGY. A study of the facts and principles of the learning process, and an application of the

methods and results of experimental psychology to the problems of class room instructions. A few of the topics studied are the learning process, habits, association, individual differences, intelligence, memory, and types of tests. Fee, \$1.00.

Credit, 4 hours. Education 211 prerequisite.

Spring term. Three divisions: M., T., W., Th. at 1:15, and T., W., Th., F. at 7: 50 and 9:40. Jewell Hall.

PROFESSOR SULLIVAN.

326. PSYCHOLOGY OF ADVERTISING. This course will be devoted to an intensive study of the psychological principles and techniques of modern advertising. The course will include a survey of the literature on advertising; a study of the fields of advertising; methods in the various fields; advertising costs; and other topics.

Credit, 2 hours. Education 211 prerequisite.

Fall term. T., Th. at 8:45. Jewell Hall.

PROFESSOR SULLIVAN.

327. APPLIED PSYCHOLOGY. An intensive study of the applications of psychological principals in various lines of work, such as business, industry, law, and medicine. Attention will also be given to a study of different types of personality.

Credit, 2 hours. Education 211 prerequisite.

Winter term. T., Th. at 8:45. Jewell Hall.

PROFESSOR SULLIVAN.

328. VOCATIONAL AND EDUCATIONAL GUIDANCE.

It is the purpose of this course to give the student an acquaintance with the methods and materials of vocational and educational guidance. Such topics will be treated in this course as the following: Development of the vocational guidance movement, methods in vocational guidance, use of tests in guidance, occupational information, vocational choices, educational guidance, the high school teacher's responsibility for guidance.

Credit, 2 hours.

Spring term. T., Th., at 8:45. Jewell Hall.

PROFESSOR SULLIVAN.

321, 321a. HISTORY OF EDUCATION. A brief study of the educational systems of Greece and Rome and of the development of the school during the middle ages. Special emphasis will be given to the development of the educational systems of modern European nations.

Credit, 2 hours each term. Freshmen not admitted.

Fall and winter terms. W., F. at 11:00. Jewell Hall.

PROFESSOR SULLIVAN.

322. **HISTORY OF EDUCATION IN THE UNITED STATES.** It is the purpose of this course to give the student an acquaintance with the development of education in the United States from the early colonial period to the present time. In the latter part of the course, attention will be given to modern practices and trends in education.

Credit, 2 hours. Freshmen not admitted.

Spring term. W., F. at 11:00. Jewell Hall.

PROFESSOR SULLIVAN.

318, 318a. **MENTAL AND EDUCATIONAL TESTS AND MEASUREMENTS.** A study of the formation, standardization, and application of mental and educational tests and measurements with special reference to the use of these tests in public school systems. Actual practice is provided for training the student in the use of simple statistical procedure.

Credit, 2 hours each term. Education 213 prerequisite.

Fall and winter terms. W., F. at 8:45. Jewell Hall.

PROFESSOR ISLEY.

329. **EDUCATIONAL MEASUREMENTS.** The student will have an opportunity to develop actual acquaintance with standardized tests in his own and related fields. He will receive practice in the selection, administration, scoring, tabulation, and interpretation of results pertaining to educational tests.

Credit, 2 hours. Education 318 prerequisite.

Fall term. W., F. at 8:45. Jewell Hall.

PROFESSOR ISLEY.

314. **TECHNIQUE OF TEACHING IN HIGH SCHOOL.** An intensive study of the principles underlying the teaching process, an evaluation of the common and newer teaching procedures, and a consideration of the general factors in teaching as reviews, assignments, etc. Required by the state department of education.

Credit, 4 hours. Education 213 prerequisite.

Spring term. T., W., Th., F. at 9:40. Jewell Hall.

PROFESSOR ISLEY.

315. **PRINCIPLES OF SECONDARY EDUCATION.** This course seeks to discover and apply the fundamental and psychological

principles upon which the organization and administration of the high school should be based. Required by the state department of education.

Credit, 4 hours. Education 314 prerequisite. Freshmen not admitted.

Winter term. T., W., Th., F. at 9:40. Jewell Hall.

PROFESSOR ISLEY.

316. PUBLIC SCHOOL ADMINISTRATION. Required of all Education majors. Attention will be given the national system of education, state, county and district organization, financial problems, selection and direction of the teaching staff, the school board, etc.

Credit, 4 hours. Education 315 prerequisite. Freshmen not admitted.

Spring term. T., W., Th., F. at 9:40. Jewell Hall.

PROFESSOR ISLEY.

320, 320a. EDUCATIONAL SOCIOLOGY. This course is intended for students with little or no training in sociology. Its purpose will be to familiarize them with the significant contributions of modern sociology as well as with their bearing upon educational objectives and upon administration and organization of education.

Credit, 2 hours each term. Freshmen not admitted. Winter term is a continuation of fall term's work with education 320 as a prerequisite.

Fall and winter terms. T., Th. at 11:00. Jewell Hall.

PROFESSOR ISLEY.

319. EXTRA-CURRICULAR ACTIVITIES IN THE SECONDARY SCHOOL. This course is designed to provide a general survey of the organization of the extra-curricular activities of the high school. Topics: School and class organization; school clubs; school publications; fraternities and sororities; student participation in school control.

Credit, 2 hours. Education 213 prerequisite. Freshmen not admitted.

Spring term. T., Th. at 11:00. Jewell Hall.

PROFESSOR ISLEY.

***325. HIGH SCHOOL ORGANIZATION AND ADMINISTRATION.** Considers problems in relation to provisions for individual differences, promotion, graduation, elimination, study halls, libraries, schedule making, home room, hand-book, blanks and forms;

ability grouping, noon hour, length of periods, absences, attendance, marking systems, faculty meetings, transfer of pupils, the first day of school, the cafeteria, failure, care of building and equipment.

Credit, 4 hours.

Fall term. T., W., Th., F. at 1:15. Jewell Hall.

PROFESSOR ISLEY.

***324. SUPERVISION OF INSTRUCTION.** Considers problems involved in the selection, training and supervision of teachers. Attention will be given the improvement of teachers in service, rating scales, supervision, visitation, promotion, uses of tests and measures in supervision, etc.

Credit, 4 hours.

Spring term. T., W., Th., F. at 1:15. Jewell Hall.

PROFESSOR ISLEY.

323. OBSERVATION AND PRACTICE TEACHING.

Two weeks are devoted to a study of practice teaching plans and procedure; four weeks to observation of the work conducted in the classes in which practice work is to be done; four weeks to responsible conduct of class work. The last two weeks of the term are given to a study of special problems and to observation.

Credit, 4 hours. Education 314 prerequisite.

Fall or winter term. Will be planned for any student for the subject and hour which suits best so far as this can be done. Arrangements must be made with the head of the department of education.

PROFESSOR ISLEY.

*Not offered in 1933-34.

ENGLISH

Courses in Journalism, Public Speaking, and Dramatics do not count toward a major. Any other nine courses form a major.

115. ENGLISH COMPOSITION. The essentials of prose composition and much writing. Daily written exercises are required. The spelling requirement imposed by the faculty is met in this class. Texts: Practice Handbook in English Composition—Harvey; Century Vocabulary Builder—Greever and Bachelor; What Can Literature Do for Me—Smith; How to Study in College—Headley; The Mind at Work—Lyman.

Credit, 4 hours. College entrance requirements prerequisite. Required of all freshmen.

Fall term. T., W., Th., F. at 8:45, 11:00, and 1:15. Jewell Hall.
PROFESSOR HARVEY.

116. **COMPOSITION.** The purpose of this course is to give training in methods, structure, and style of the forms of prose composition.

Credit, 4 hours. Course 115 prerequisite. Required of all freshmen.

Winter term. T., W., Th., F. at 8:45, 11:00, and 1:15. Jewell Hall.

PROFESSOR HARVEY.

117. **COMPOSITION.** Special study and practice in narration and description.

Credit, 4 hours. Courses 115 and 116 prerequisite. Required of all freshmen.

Spring term. T., W., Th., F. at 8:45, 11:00, and 1:15. Jewell Hall.

PROFESSOR HARVEY.

218. **JOURNALISM.** Gathering news. For members of the *Student* staff and reporters. Text: Reporting for Beginners—MacDougal.

Credit, 2 hours. Courses 115, 116, 117 prerequisites.

Fall term. Hours, 3:05 twice a week, days to be arranged. Jewell Hall.

PROFESSOR HARVEY.

219. **JOURNALISM.** Problems of reporting. Analysis of news values and the problems of reporting. Discussion of fair play and accuracy. For members of the *Student* staff and its reporters.

Credit, 2 hours. Course 218 prerequisite.

Winter term. Hours, 3:05 twice a week, days to be arranged. Jewell Hall.

PROFESSOR HARVEY.

220. **JOURNALISM.** The Newspaper. Reading copy and re-writing. Fundamentals of newspaper organization. For the members of the *Student* staff and its reporters.

Credit, 2 hours. Course 219 prerequisite.

Spring term. Hours, 3:05 twice a week, days to be arranged.
Jewell Hall.

PROFESSOR HARVEY.

221. **PUBLIC SPEAKING.** Forum plan to be used, with emphasis on extemporaneous speaking.

Credit, 2 hours. Courses 115 and 116 prerequisites.

Fall term. Hours, 2:10 twice a week, days to be arranged. Jewell Hall.

MR. EWING.

222. **PUBLIC SPEAKING.** Forum plan to be used, with emphasis on argumentation and debate.

Credit, 2 hours. Courses 115 and 116 prerequisites.

Winter term. Hours, 2:10 twice a week, days to be arranged. Jewell Hall.

MR. EWING.

223. **PUBLIC SPEAKING.** Forum plan to be used, with emphasis on oratory and interpretation.

Credit, 2 hours. Courses 115 and 116 prerequisites.

Spring term. Hours, 2:10 twice a week, days to be arranged. Jewell Hall.

MR. EWING.

230. **SURVEY OF WORLD LITERATURE.**

Credit, 4 hours. For sophomores. 115, 116, 117 prerequisites.

Fall term. T., W., Th., F. at 8:45 and 9:40. Jewell Hall.

MISS RICE.

231. **SURVEY OF ENGLISH LITERATURE.**

Credit, 4 hours. For sophomores. English 115, 116, 117 prerequisites.

Winter term. T., W., Th., F. at 8:45 and 9:40. Jewell Hall.

MISS RICE.

232. **SHAKESPEARE AS A DRAMATIST.**

Credit, 4 hours. For sophomores. English 115, 116, 117 prerequisites.

Spring term. T., W., Th., F. at 8:45 and 9:40. Jewell Hall.

MR. EWING AND MISS RICE.

308. **MODERN PROSE.**

Credit, 4 hours. English 230 and 231 prerequisites. For juniors.

Fall term. T., W., Th., F. at 7:50. Jewell Hall.
MR. EWING.

309. MODERN DRAMA.

Credit, 4 hours. English 230 and 231 prerequisites. For juniors.
Winter term. T., W., Th., F. at 7:50. Jewell Hall.
PROFESSOR FRUIT AND MISS RICE.

310. MODERN POETRY.

Credit, 4 hours. English 230 and 231 prerequisites. For juniors.
Spring term. T., W., Th., F. at 7:50. Jewell Hall.
MISS RICE.

312. LITERATURE OF THE VICTORIAN ERA.

Credit, 4 hours. English 231 and 232 prerequisites. For seniors.
Fall term. T., W., Th., F. at 7:50. Jewell Hall.
PROFESSOR FRUIT AND MR. EWING.

314. ESTHETICS AND CRITICISM.

Credit, 4 hours. General Psychology prerequisite. For seniors.
Spring term. T., W., Th., F. at 7:50. Jewell Hall.
PROFESSOR FRUIT.

315. AMERICAN LITERATURE.

Credit, 4 hours. English 230 and 231 prerequisites.
Spring term. T., W., Th., F. at 7:50. Jewell Hall.
MR. EWING.

301. ADVANCED ENGLISH COMPOSITION AND RHETORIC. A study of the principles of rhetoric with special consideration of the informal essay. Much practice. The instructor reserves the right to bar students whose training in the use of English appears to be insufficient to carry on the work in this course.

Credit, 2 hours. For juniors and seniors.

Fall term. T., Th., at 9:40.

PROFESSOR HARVEY.

302. ADVANCED ENGLISH COMPOSITION AND RHETORIC. This term and the following, emphasis will be given to the study of principles narrative writing with special attention to the short story. Texts: Narrative Technique—Thomas H. Uzzell, Weaving the Short Story—Douglas Bement. There will be much practice writing.

Credit, 2 hours. For juniors and seniors. Prerequisite 301 or equivalent.

Winter term. T., Th. at 9:40.

PROFESSOR HARVEY.

303. ADVANCED ENGLISH COMPOSITION AND RHETORIC. This term will be an extension of the work of the winter term and the same texts will be used. The writing of one practice novelette will be required.

Credit, 2 hours. For juniors and seniors. Prerequisites 301 and 302 or equivalent.

Spring term. T., Th. at 9:40.

PROFESSOR HARVEY.

341. ROBERT BROWNING. This course is generally given in the summer session. A study of the longer poems, the dramas, and "The Ring and the Book." A copy of the complete poems of Robert Browning will be the required text. Commentaries on the poet will be read and many classroom lectures will be given.

Credit, 4 hours. For juniors and seniors. Hours to be arranged. Given on demand.

DRAMATICS

238. PROBLEMS OF THE ACTOR. The study of major and minor problems of the amateur actor, emphasizing characterization, pantomime, and make-up. Text: Acting—Crafton and Royer.

*Credit, 2 hours.

Fall term. T., Th. at 4:00. Chapel.

MISS RICE.

239. READING AND DRAMATIZING PLAYS. The study of modern drama from the standpoint of the actor. Reviewing of modern plays in class.

*Credit, 2 hours.

Winter term. T., Th. at 4:00. Chapel.

MISS RICE.

240. THE ART OF PLAY PRODUCTION. One act plays studied and acted from the point of view of direction and stagecraft.

Credit, 2 hours.

Spring term. T., Th. at 4:00. Chapel.

MISS RICE.

*NOTE—

(a) The class membership is limited to twenty (20) selected from upper classmen at the beginning of the school year.

(b) One production is scheduled for each term.

(c) Each student who contemplates taking the course should have two hours (besides the two hours for class work) available for practice, which time will be considered as laboratory periods.

ENGINEERING DRAWING

Engineering Drawing 101a to 206 are required for entrance to most engineering schools.

101a. **ELEMENTS OF ENGINEERING DRAWING.** Use of instruments, freehand lettering, geometrical figures, and orthographic projection. Text: Engineering Drawing—French. Fee, \$2.50.

Credit, 2 hours. Elective.

Fall term (also repeated winter and spring terms). M., W. or T., Th. at 2:10. Four hours per week. Marston Hall.

MR. VANTRUMP.

102a. **PROJECTIONS AND DIMENSIONING.** Isometric oblique and cabinet projections, emphasis on dimensioning, development of surfaces and intersections for sheet metal work. Text: Engineering Drawing—French. Fee, \$2.50.

Credit, 2 hours. Drawing 101a prerequisite.

Fall term (also repeated winter and spring terms). M., W. or T., Th. at 2:10. Four hours per week. Marston Hall.

MR. VANTRUMP.

103a. **APPLICATIONS OF DRAWING.** Working drawings, sketches, tracings, printing, bolts, threads, piping, etc. Fee, \$2.50.

Credit, 2 hours. Drawing 102a prerequisite.

Fall term (also repeated winter and spring terms). M., W. or T., Th. at 2:10. Four hours per week. Marston Hall.

MR. VANTRUMP.

204. **DESCRIPTIVE GEOMETRY.** Point, line, and plane.

Credit, 4 hours. Upon presentation of plates showing satisfactory completion of the equivalent of courses 101a, 102a, 103a, a student may be enrolled in this course.

Fall term. M., T., W., Th. at 2:10. Two lectures and four hours drawing per week. Marston Hall.

MR. VANTRUMP.

205. DESCRIPTIVE GEOMETRY. Continuation of 204.

Credit, 4 hours.

Winter term. M., T., W., Th. at 2:10. Two lectures per week and four hours drawing. Marston Hall.

MR. VANTRUMP.

206. DESCRIPTIVE GEOMETRY. Oblique and parallel perspective. Elements of structural drawing. Shades and shadows.

Credit, 2 hours.

Spring term. M., T., or W., Th. at 2:10. Four hours per week. Marston Hall.

MR. VANTRUMP.

GEOLOGY

301, 302. PHYSICAL GEOLOGY. An elementary course on minerals and rocks is offered in the winter and spring terms, including physical and structural geology preparing for subsequent study of historical geology. Text: Emmon's Geology. Fee, \$1.00 per term.

Credit, 2 hours each term. Open to juniors and seniors. Prerequisite, one year of College Physics or Chemistry.

Winter and spring terms. M., W. at 1:15. Marston Hall.

PROFESSOR WEIDA.

303. HISTORICAL GEOLOGY. A study of the forming of the oceans and continents, and the history of the forms of life in geological times. Offered in alternate years. Given in 1933-34.

Credit, 2 hours. Biology 121, 122, 123 prerequisite.

Fall term. T., Th. at 11:00.

PROFESSOR ELMORE.

GREEK

Courses 101, 102, 103, 221, 222, 223 form a minor. Nine terms of Greek form a major.

101, 102, 103. ELEMENTARY GREEK.

Credit, 4 hours each term.

Fall, winter, and spring terms. T., W., Th., F. at 11:00. Jewell Hall.

PROFESSOR DERWACTER.

221. XENOPHON: ANABASIS. The purpose of the course is to strengthen the student's knowledge of form and syntax, and to in-

crease his facility in the reading of easy Greek. A thorough study of Goodwin's Greek Grammar is made in courses 221, 222, 223.

Credit, 4 hours. Greek 103 prerequisite.

Fall term. M., T., W., Th. at 2:10. Jewell Hall.

PROFESSOR DERWACTER.

222. HERODOTUS: SELECTIONS. Herodotus is studied both as a story teller and an historian. Many of his most interesting stories are read.

Credit, 4 hours. Greek 221 prerequisite.

Winter term. M., T., W., Th. at 2:10. Jewell Hall.

PROFESSOR DERWACTER.

223. HOMER: ILIAD.

Credit, 4 hours. Greek 222 prerequisite.

Spring term. M., T., W., Th. at 2:10. Jewell Hall.

PROFESSOR DERWACTER.

311a, 312a, 313a. NEW TESTAMENT GREEK. In these courses the student is made familiar with the main differences between the classical Greek and the Koine Greek in which the New Testament was written. The student is introduced to the various types of literature and of style represented by the different writers. (Identical with Bible 311a, 312a, 313a.)

Credit, 4 hours each term. Greek 223 (two years of Greek) prerequisite.

Fall, winter, and spring terms. T., W., Th., F., at 9:40. Not Given in 1933-34. Jewell Hall.

PROFESSOR DERWACTER.

324. PLATO: APOLOGY AND CRITO.

Credit, 4 hours. Greek 223 (two years of Greek) prerequisite.

Fall term. T., W., Th., Fri. at 9:40. Jewell Hall.

PROFESSOR DERWACTER.

***325. EURIPIDES: SELECTED PLAYS.**

Credit, 4 hours. Greek 324 prerequisite.

Winter term. Jewell Hall.

PROFESSOR DERWACTER.

***326. SOPHOCLES: ANTIGONE.**

Credit, 4 hours. Greek 325 prerequisite.

Spring term. Jewell Hall.

PROFESSOR DERWACTER.

329. **SEPTUAGINT.** A course in Greek Old Testament as a background for the study of the New Testament.

Credit, 4 hours. Greek 223 (two years of Greek) prerequisite.

Winter term. T., W., Th., F. at 9:40. Jewell Hall.

PROFESSOR DERWACTER.

330. **GREEK PAPYRI.** A study of some of the letters unearthed in Egypt, written in the vernacular of the New Testament period.

Credit, 4 hours. Greek 223 (two years of Greek) prerequisite.

Spring term. T., W., Th., F. at 9:40. Jewell Hall.

PROFESSOR DERWACTER.

*Will be given on sufficient demand.

NOTE—Courses 324, 329, 330, are given in alternation with New Testament Greek (Bible 311a, 312a, 313a). Courses 324, 329, 330 will be given in 1933-34.

HISTORY

GENERAL REMARKS

It is important that students take history courses in sequence.

The freshman should enter course 101, and continue throughout the year in Freshman History.

History 101, 102, and 103, or their equivalent, are prerequisite to all further historical study, and should be taken in the freshman year. Juniors and seniors will not be admitted to these courses.

MAJORS AND MINORS

Students who major in the field of History will be required to take courses 101, 102, 103, 210, 211, and 212, with an additional three courses to be selected from courses 201, 202, 203r, 204, 205, 206, 207, 208, 209, 307, 308, 309, 310, 311, and 312.

The cognate minor for the History major shall consist of one year of Political Science and one year of either Sociology or Economics.

COURSES OF INSTRUCTION

101. **ORIGINS OF EUROPEAN CIVILIZATION.** A survey of the development of European civilization from the break up of the

Roman Empire to the discovery of America (500 to 1500). For freshmen.

Credit, 4 hours. Prerequisite to further study of History.

Fall term. T., W., Th., F. at 7:50. Jewell Hall.

ASSISTANT PROFESSOR PUGH.

102r. **FOUNDATIONS OF MODERN EUROPE.** A survey of the development of European civilization from the discovery of America to the Congress of Vienna (1500 to 1815). For freshmen.

Credit, 4 hours. Prerequisite, History 101.

Winter term. T., W., Th., F. at 7:50. Jewell Hall.

ASSISTANT PROFESSOR PUGH.

103. **MODERN EUROPE.** A survey of the development of European civilization from the Congress of Vienna to the present (1850 to the present). For freshmen.

Credit, 4 hours. Prerequisite, History 101, 102r.

Spring term. T., W., Th., F. at 7:50. Jewell Hall.

ASSISTANT PROFESSOR PUGH.

201. **THE RENAISSANCE AND THE REFORMATION.** A course dealing with the Renaissance movement in western Europe and a study of the religious changes during the 16th and 17th centuries. Special emphasis given to the cultural, social and political history of the period. The various religious reforms in Germany, Switzerland, and England will be studied. For sophomores. Not given in 1933-34.

Credit, 4 hours. Prerequisite, History 103.

Fall term. T., W., Th., F. at 11:00. Jewell Hall.

ASSISTANT PROFESSOR PUGH.

202. **THE FRENCH REVOLUTION AND NAPOLEONIC ERA.** The causes leading up to the French Revolution of 1789 and an intensive study of the conflict between the old and the new regime which resulted in the triumph of revolutionary ideas. The course continues with a study of the Napoleonic wars with the final settlement in the Congress of Vienna in 1815. For sophomores. Not given in 1933-34.

Credit, 4 hours. Prerequisite, History 103.

Winter term. T., W., Th., F. at 11:00. Jewell Hall.

ASSISTANT PROFESSOR PUGH.

203r. **EUROPE SINCE 1914.** A study involving the causes of the World War, the principal events of the World War, the Treaty of

Versailles, and the reconstruction of Europe. Special attention will be given to an analysis and evaluation of the social forces operative in Europe since the World War. For sophomores. Not given in 1933-34.

Credit, 4 hours. History 201 and 202 prerequisites for students majoring in History. History 103 prerequisite for others.

Spring term. T., W., Th., F. at 11:00. Jewell Hall.

ASSISTANT PROFESSOR PUGH.

204. **MODERN FRANCE.** A course dealing with the reconstruction of France after 1870, the organization and final establishment of the Third Republic, and her relations with other countries to 1914.

Alternates with History 201. Not given in 1933-34.

Credit, 4 hours. Prerequisite, History 103.

Fall term. T., W., Th., F. at 11:00. Jewell Hall.

ASSISTANT PROFESSOR PUGH.

205. **THE GERMAN EMPIRE.** A study of the political, social, economic, intellectual, and religious development of Germany between 1870 and 1914, and the relation of the Empire to other countries.

Alternates with History 202. Not given in 1933-34.

Credit, 4 hours. Prerequisite, History 103.

Winter term. T., W., Th., F. at 11:00. Jewell Hall.

ASSISTANT PROFESSOR PUGH.

206. **MODERN RUSSIA.** A study of the social, political, economic, and intellectual development of Russia under the Czars, with a more detailed examination of the social forces operative in the life of Russia since 1917.

Alternates with History 201.

Credit, 4 hours. Prerequisite, History 103.

Fall term. T., W., Th., F. at 11:00. Jewell Hall.

ASSISTANT PROFESSOR PUGH.

207. **THE NEAR EAST.** A study of Southeastern Europe and the Levant from the founding of Constantinople in 330 A. D. to the present, with emphasis upon their relation to world politics.

Alternates with History 202.

Credit, 4 hours. Prerequisite, History 103.

Winter term. T., W., Th., F. at 11:00. Jewell Hall.

ASSISTANT PROFESSOR PUGH.

208. **THE FAR EAST.** A survey course dealing with the development of China, Japan, and India and the relations of these three to world affairs.

Alternates with History 203.

Credit, 4 hours. Prerequisite, History 103.

Spring term. T., W., Th., F. at 11:00. Jewell Hall.

ASSISTANT PROFESSOR PUGH.

209. **LATIN AMERICA.** A study of the formation of the republics of South and Central America, and their subsequent history. Special emphasis will be given to the relation of these Republics to the United States.

Alternates with History 203. Not given in 1933-34.

Credit, 4 hours. Prerequisite, History 103.

Spring term. T., W., Th., F. at 11:00. Jewell Hall.

ASSISTANT PROFESSOR PUGH.

210. **EARLY AMERICAN.** This course deals with the development of the national life from the adoption of the constitution to the Civil War.

Credit, 4 hours. Prerequisite, History 103.

Fall term. T., W., Th., F. at 11:00. Jewell Hall.

PROFESSOR SMITH.

211. **RECENT AMERICAN.** A survey of the development of the social, economic, political, and religious life of America since the Civil War.

Credit, 4 hours. Prerequisite, History 210.

Winter term. T., W., Th., F. at 11:00. Jewell Hall.

PROFESSOR SMITH.

212. **AMERICAN FOREIGN RELATIONS.** A study of the relations of America with other countries, the nature of these diplomatic problems, and an evaluation of America's international ethics in the adjustment of international problems.

Credit, 4 hours. Prerequisite, History 210 and 211.

Spring term. T., W., Th., F. at 11:00. Jewell Hall.

PROFESSOR SMITH.

231b. **HISTORY OF THE CHURCH.** Identical with Bible 231b.

232b. **HISTORY OF THE CHURCH.** Identical with Bible 232b.

302e. **EUROPEAN ECONOMIC HISTORY.** Identical with Economics 302.

302p. **HISTORY OF PHILOSOPHY.** Identical with Philosophy 302.

307. **TUDOR AND STUART ENGLAND.** An intensive study of the beginnings of modern England. Special attention will be given to the economic, religious, social, political, and intellectual forces which were transforming the feudal society into national England.

Alternates with History 310.

Credit, 4 hours. Prerequisite, History 103.

Fall term. T., W., Th., F. at 1:15. Jewell Hall.

PROFESSOR SMITH.

308. **MODERN BRITAIN.** Great Britain has shown rare leadership among the nations of the world in the solution of industrial, social, political, and economic problems. The British history of these problems is presented in this course.

Alternates with History 311.

Credit, 4 hours. Prerequisite, History 103.

Winter term. T., W., T., F. at 1:15. Jewell Hall.

PROFESSOR SMITH.

309. **THE BRITISH EMPIRE.** A study of the development of the British Commonwealth of Nations. Special attention will be given to constitutional government and relations of Canada, Australia, Ireland, S. Africa, and India as units of the Empire.

Alternates with History 312.

Credit, 4 hours. Prerequisite, History 103.

Spring term. T., W., Th., F. at 1:15. Jewell Hall.

PROFESSOR SMITH.

310. **ANCIENT CIVILIZATION.** The civilizations of Greece and Rome will be studied against the background of previous civilizations. Emphasis will be given to the achievements of Greece and Rome in the field of art, government, religion, etc. Not given in 1933-34.

Credit, 4 hours. Prerequisite, History 201.

Fall term. T., W., Th., F. at 1:15. Jewell Hall.

PROFESSOR SMITH.

311. **HISTORICAL SUMMARY.** The purpose of this course is to give perspective and summary interpretation to the whole process

of civilization to the student whose major interest is in the field of History. Not given in 1933-34.

Admission by permission of Department Head.

Credit, 4 hours.

Winter term. T., W., Th., F. at 1:15. Jewell Hall.

PROFESSOR SMITH.

312. **AMERICA SINCE 1914.** An examination of the causes of the World War, the part America played in it, and the social, economic, political, religious, and intellectual adjustment which followed the war. Not given in 1933-34.

Credit, 4 hours. Prerequisite, History 211.

Spring term. T., W., Th., F. at 1:15. Jewell Hall.

PROFESSOR SMITH.

313. **HISTORY OF ETHICS.** Present day code of ethics have their origins in the experiences of the race. This course deals with the origins of these thought forms and their practical application to the life of their time, from the Greek civilization to the present.

Admission by permission of the Department Head. Given in 1933-34.

Credit, 4 hours.

Spring term. T., W., Th., F. at 1:15. Jewell Hall.

PROFESSOR SMITH.

321-Ed. **HISTORY OF EDUCATION.** Identical with Education 321.

HONORS COURSES

401. **RESEARCH SEMINAR.** The purpose of this course is to stimulate and guide majors in the History Department in the method and achievement of independent research. Subject to be determined by the interest of the student. Result of the research to be produced in thesis form. Limited to three students, selected by department head, approved by the curriculum committee.

Credit, 2 hours.

Fall term. Meetings on conference basis. Time to be arranged.

PROFESSOR SMITH.

402. RESEARCH SEMINAR. Continuation of History 401. Winter term.

Credit, 2 hours.

403. RESEARCH SEMINAR. Continuation of History 402. Spring term.

Credit, 2 hours.

LATIN

Courses 107, 108, 109, 201, 202, 203 and three additional terms of four hours each, for which 203 is a prerequisite, form a major. Six consecutive terms of college Latin form a minor.

101, 102, 103. BEGINNING LATIN AND CAESAR. This course is open for credit to those who offer less than two units of Latin for entrance. Not open to seniors, except by permission.

Credit, 4 hours each term.

Fall, winter, and spring terms. M., T., W., Th. at 1:15. Jewell Hall.

PROFESSOR MOON.

104, 105, 106. CAESAR AND CICERO'S ORATIONS. Latin Composition will be given one day a week. Emphasis will be placed on word derivation. Some study will be made of Roman political institutions. This course is designed primarily for students who offer only two entrance units of Latin.

Credit, 4 hours each term. Two entrance units in Latin prerequisite.

Fall, winter, and spring terms. T., W., Th., F. at 8:45. Jewell Hall.

PROFESSOR DERWACKER.

107, 108, 109. OVID AND VERGIL'S AENEID. Emphasis will be placed on the cultural aspect of the two poets.

Credit, 4 hours each term. Three entrance units in Latin prerequisite.

Fall, winter, and spring terms. T., W., Th., F. at 7:50. Jewell Hall.

PROFESSOR MOON.

201. **CICERO: DE AMICITIA, DE SENECTUTE.** The *De Amicitia* will be read carefully and the *De Senectute* more rapidly.

Credit, 4 hours. Four entrance units in Latin prerequisite.

Fall term. T., W., Th., F. at 9:40. Jewell Hall.

PROFESSOR MOON.

202. **PLINY: SELECTED LETTERS.** In this course some study will be made of Roman Life in the Silver Age. The epistolary type of literature also will be studied.

Credit, 4 hours. Four entrance units in Latin prerequisite.

Winter term. T., W., Th., F. at 9:40. Jewell Hall.

PROFESSOR MOON.

203. **SELECTIONS FROM LATIN AUTHORS.** In this course are included the best of the shorter poems in Latin literature, and selections from various prose writers.

Credit, 4 hours. Four entrance units in Latin prerequisite.

Spring term. T., W., Th., F. at 9:40. Jewell Hall.

PROFESSOR MOON.

*304. **HORACE: ODES.** Translation and interpretation of the Odes, and careful study of the metrical systems.

Credit, 4 hours. Latin 203 prerequisite.

Fall term. M., T., W., Th. at 3:05. Jewell Hall.

PROFESSOR MOON.

*305. **CICERO: PHILOSOPHICAL WORKS.** The *Tusculan Disputations* will serve as a basis for study.

Credit, 4 hours. Latin 203 prerequisite.

Winter term. M., T., W., Th. at 3:05. Jewell Hall.

PROFESSOR MOON.

*306. **LUCRETIUS: DE RERUM NATURA.** Critical study of Epicureanism as expounded by Lucretius.

Credit, 4 hours. Latin 203 prerequisite.

Spring term. M., T., W., Th. at 3:05. Jewell Hall.

PROFESSOR MOON.

*307. **TACITUS: GERMANIA AND AGRICOLA.** Study of Tacitus' sources for the *Germania*, and the character of ancient biography.

Credit, 4 hours. Latin 203 prerequisite.

Fall term. M., T., W., Th. at 3:05. Jewell Hall.

PROFESSOR MOON.

***308. LATIN COMPOSITION.**

Credit, 4 hours. Latin 203 prerequisite.

Winter term. M., T., W., Th. at 3:05. Jewell Hall.

PROFESSOR MOON.

***309. JUVENAL.** The origin and development of Roman satire. Study of social life at Rome in the first century A. D.

Credit, 4 hours. Latin 203 prerequisite.

Spring term. M., T., W., Th. at 3:05. Jewell Hall.

PROFESSOR MOON.

***310. SENECA'S EPISTLES.** Study of Greek and Roman philosophy, and influence of Seneca on later literature.

Credit, 4 hours. Latin 203 prerequisite.

Fall term. M., T., W., Th. at 3:05. Jewell Hall.

PROFESSOR MOON.

***311. ROMAN COMEDY.** Origin and development of Roman comedy. Not less than two plays of Terence or Plautus will be studied.

Credit, 4 hours. Latin 203 prerequisite.

Winter term. M., T., W., Th. at 3:05. Jewell Hall.

PROFESSOR MOON.

***312. ROMAN ELEGY.** Selections from Tibullus and Propertius. Attention to contents, metre, and stylistic features.

Credit, 4 hours. Latin 203 prerequisite.

Spring term. M., T., W., Th. at 3:05. Jewell Hall.

PROFESSOR MOON.

*Given according to demand.

MATHEMATICS AND ASTRONOMY

GENERAL REMARKS

The mathematics department is desirous of extending its greatest assistance to students interested in that phase of education. To that end the following suggestions are made. The department of mathematics of William Jewell College serves the interests of five different types of students: (1) those interested in mathematics, who, after graduating from a four-year academic course in college, expect to enter some higher institution of learning to specialize in that field and its application; (2) those desiring to become teachers of mathematics in secondary schools; (3) those interested in one or more of the many

branches of engineering; (4) those interested in mathematics because of its applications to the sciences less closely related to mathematics than engineering; and (5) those interested in a general knowledge of the subject because of its disciplinary value, eternal truths, and general application to civilization.

Students whose major interests are included in 1, 2, or 3, as listed above, should consult with the heads of the Mathematics and Physics Departments. Students whose interests are included in number 4 will do well to consult the head of the department of the science in which they are most interested. For students whose interests are included in number 5, the course in mathematics numbers 101, 102, and 103 is being offered.

MAJOR AND MINOR

Courses numbers 111a, 111b, 115a, 115b, 117, 222, 225, 226, 334, and 336 are required for a major in mathematics. The first eight of these courses are required for a minor in mathematics. With special permission of head of department, courses 101, 102, and 103 may be substituted for courses 111a, 111b, 115a, 115b, and 117.

NOTES CONCERNING COURSES

Course in mathematics numbers 101, 102, and 103 is intended for those students who are interested in only one year of mathematics. The primary aim of this course as differentiated from the other freshman course is that it seeks to give the one-year student of mathematics a working knowledge of the fundamentals through elementary calculus and an insight into the range of their applications rather than a comprehensive knowledge of the theoretical and applied mathematics through plane analytic geometry. A student having had this course may continue in second year mathematics but it will be more difficult for him than if he had had the course in mathematics numbers 111a, 111b, 115a, 115b, and 117.

Solid geometry may not be substituted for a required course in either a major or minor in mathematics. This course should be taken by all who have not had it in high school and expect to take more than one year of mathematics.

For special methods of teaching secondary school mathematics see secondary education in summer school catalog. This course should be taken by all prospective teachers of mathematics.

COURSES OF INSTRUCTION.

***101. GENERAL MATHEMATICS.** The following topics will be studied: functions and graphs, trigonometric functions, exponents, logarithms, reduction formulas, line value, laws of sine, cosine, and tangent, solution of right and oblique triangles, straight line formulas, quadratic functions, etc. Text: Currier and Watson, General Mathematics.

Credit, 5 hours. One unit each of algebra and plane geometry prerequisites. For freshmen.

Fall term. M., T., W., Th., F. at 8:45. Marston Hall.

PROFESSOR DENTON.

***102. GENERAL MATHEMATICS.** A continuation of mathematics number 101 and linear equations, determinents, theory of equations, differentiation of elementary algebraic functions, integration, definite integrals, trigonometric functions (of a single angle, of multiple angles, graphical representation of, identities), polarco-ordinates, etc.

Credit, 5 hours. Mathematics 101 prerequisite.

Winter term. M., T., W., Th., F. at 8:45. Marston Hall.

PROFESSOR DENTON.

***103. GENERAL MATHEMATICS.** A continuation of mathematics number 102 and progressions, series, interest formulas mathematical induction, binomial theorem, exponential functions, conic sections, transformation of co-ordinates, direction cosine, loci in space, surfaces of revolution, application of definite integrals, permutations combinations, probability, theory of measurements (averages, central tendency, relationships), complex numbers, etc.

Credit, 5 hours. Mathematics 102 prerequisite.

Spring term. M., T., W., Th., F. at 8:45. Marston Hall.

PROFESSOR DENTON.

110. SOLID GEOMETRY. An introduction to space relationships. Topics studied are: planes, dihedral, trihedral, and polyhedral angles, prisms, pyramids, cylinders, cones, spheres, etc. Recommended for students who did not have solid geometry in high school and expect to continue mathematics beyond the freshman year in college. Text: Smith, Essentials of Solid Geometry.

Credit, 3 hours. One unit each of algebra and plane geometry prerequisites. For freshmen.

*Not given 1933-34.

Winter term. M., W., F. at 7:50. Marston Hall.
MR. VANTRUMP.

111a, 111b. **COLLEGE ALGEBRA.** A rapid review of the fundamentals of high school algebra and linear equations, quadratic equations, determinants, inequalities, progressions, logarithms, mathematical induction, binomial theorem, theory of equations, complex numbers, mathematics of finance, partial fractions, permutations, combinations, probabilities, series, etc. Text: Harts, College Algebra.

Credit, 3 hours each term. One unit each of algebra and plane geometry prerequisites. For freshmen.

Fall and winter terms. M., W., F. at 8:45. Marston Hall.

PROFESSOR DENTON.

115a, 115b. **PLANE TRIGONOMETRY.** Topics considered are objects of trigonometry, functions of an acute angle, logarithms, use of tables, solutions of right triangles, reduction formulas, line value, radian measure, graphical representation, functions of a single angle, identities, inverse function, trigonometric equations, law of sine, cosine, and tangent, solution of oblique triangles, functions of multiple angles, identities, etc. Text: Shibli, Plane and Spherical Trigonometry.

Credit, 2 hours each term. One unit each of algebra and plane geometry prerequisite. For freshmen.

Fall and winter terms. T., Th. at 8:45. Marston Hall.

PROFESSOR DENTON.

117. **PLANE ANALYTIC GEOMETRY.** Topics studied are: fundamental notions, equations and their graphs, the straight line, circle, parabola, ellipse, hyperbola, properties of conic sections, transformation of co-ordinates, polar co-ordinates, higher plane curves, elements of curve fitting, etc. Text: Harding and Mullins, Analytic Geometry.

Credit, 5 hours. Mathematics 111b and 115b prerequisites.

Spring term. M., T., W., Th., F. at 8:45. Marston Hall.

PROFESSOR DENTON.

221. **SPHERICAL TRIGONOMETRY.** This course is intended for students interested in higher mathematics, surveying, and astronomy. It treats of polar triangles, right spherical triangles, oblique spherical triangles, complex numbers, DeMoivre's theorem, hyperbolic func-

tions, etc. Text: Shibli, Plane and Spherical Trigonometry (pages 159 to 206).

Credit, 2 hours. Mathematics 115b prerequisite.

Winter term. T., Th. at 9:40. Marston Hall.

PROFESSOR DENTON.

222. ANALYTIC GEOMETRY OF SPACE. This course treats of planes and lines in space, transformation of co-ordinates, types of surfaces, the sphere, the ellipsoid, the hyperboloid of one and two sheets, the elliptic and hyperbolic paraboloids, quadric cones and cylinders, classification of quadratic surfaces, some properties of quadratic surfaces, etc.

Credit, 3 hours. Mathematics 117 prerequisite.

Winter term. M., W., F. at 9:40. Marston Hall.

PROFESSOR DENTON.

225. THE CALCULUS. The following topics will be studied: general principles of differentiation, differentiation of algebraic trigonometric, inverse trigonometric, logarithmic, and exponential functions, higher derivatives, differentials, maxima and minima and their applications, curvature, radius of curvature, theorem of mean value, indeterminate forms, integration, applications of integration, etc.

Credit, 5 hours. Mathematics 117 prerequisite.

Fall term. M., T., W., Th., F. at 9:40. Marston Hall.

PROFESSOR DENTON.

226. THE CALCULUS. A continuation of mathematics number 225 and constants of integration, the definite integral, integration a process of summation, integration by various devices, centroids, fluid pressure, other applications, series, expansion of functions, partial differentiation, applications, multiple integrals, moment of inertia, etc.

Credit, 5 hours. Mathematics 225 prerequisite.

Spring term, M., T., W., Th., F. at 9:40. Marston Hall.

PROFESSOR DENTON.

331. ANALYTIC MECHANICS. (Statics). This course will include fundamental laws, conceptions, and definitions, resultants of force systems (parallel and non-parallel, concurrent and non-concurrent, in planes and in space), equilibrium of force systems, couples, trusses, cranes, cables, friction, centroids, moment of inertia, etc.

Text: Seely and Ensign, Analytic Mechanics for Engineers.

Credit, 5 hours. Mathematics 226 prerequisite.

Winter term. M., T., W., Th., F. at 7:50. Marston Hall.

PROFESSOR DENTON.

332. ANALYTIC MECHANICS. (Dynamics). A continuation of mathematics 331 and motion of particles, velocity and acceleration (linear and angular), force, mass, moments, translation, rotation, plane motion, relative motion, work, energy, impulse, momentum, etc.

Credit, 5 hours. Mathematics 331 prerequisite.

Spring term. M., T., W., Th., F. at 7:50. Marston Hall.

PROFESSOR DENTON.

***334. DIFFERENTIAL EQUATIONS.** Differential equations of the first order and first degree and first order and higher degrees, singular solutions, linear equations with constant and variable coefficients, exact differential equations, integration in series, equations of the second order, ordinary differential equations of more than two variables, applications of the above principles to geometry, mechanics, and physics. (Corresponds to mathematics 27 of the 1928-29 catalog.) Text: Murray, Differential Equations.

Credit, 5 hours. Mathematics 226 prerequisite.

Fall term. M., T., W., Th., F. at 7:50. Marston Hall.

PROFESSOR DENTON.

***336. THEORY OF EQUATIONS.** An introductory course. This course will include: elementary properties of equations, complex numbers, the fundamental theorem, elementary transformation of equations, location of roots of equations, Horner's method, algebraic solution of the cubic and the quartic, solution of binomial equations, reciprocal equations, determinants, symmetric functions, elimination, resultants, etc.

Credit, 5 hours. Mathematics 226 prerequisite.

Fall term. M., T., W., Th., F. at 7:50. Marston Hall.

PROFESSOR DENTON.

***338. SELECTED TOPICS FROM HIGHER MATHEMATICS.** A course in advanced calculus covering the following topics: general method of integration, reduction formulas, double integrals, applications, triple integrals, partial differentiation, applications to geometry of space, Taylor's theorem, maxima and minima, Lagrange's multipli-

ers, envelopes, etc. Text: Osgood, Advanced Calculus.

Credit, 5 hours. Mathematics 226 prerequisite.

Winter term. M., T., W., Th., F. at Marston Hall.

PROFESSOR DENTON.

*339. **SELECTED TOPICS FROM HIGHER MATHEMATICS.** A continuation of mathematics 338 and elliptic functions, indeterminate forms, line integrals, Green's theorem, flow of heat, transformation of multiple integrals, vector analysis, Fourier's series, etc.

Credit, 5 hours. Mathematics 338 prerequisite.

Spring term. M., T., W., Th., F. at 7:50. Marston Hall.

PROFESSOR DENTON.

121, 122, 123. **DESCRIPTIVE ASTRONOMY.** A study of astronomical terms, planets, stars, sun, nebulae, comets, satellites, telescopes, spectroscopy, paths of heavenly bodies, etc. Text: Duncan, Astronomy. Fee, \$1.00 for fall and winter terms only.

Credit, 2 hours each term.

Fall, winter, and spring terms. T., Th. at 9:40. Marston Hall.

MR. VANTRUMP.

*Not given in 1933-34.

DEPARTMENTS OF MODERN LANGUAGES

GENERAL REMARKS

In the early stages of the study of the languages taught in the Departments, the student is made to learn the correct and standard pronunciation in such a way, that he not only learns to pronounce the French, Spanish, and German, but by constant comparisons of the sounds of these languages with those of English, he is enabled to appreciate a more correct pronunciation of his own native tongue.

By constant drill, the student learns the written and the spoken language; and by the middle of the second year of his studies, he is able to read and converse fairly well in the language studied.

Toward the end of the third year, the student surveys the entire field of the literature of the language he studies and gets acquainted with all its outstanding epochs, with the great master-minds and their dominating characteristics.

Having surveyed the field, the student then reads selections from the classics and from the romanticists of the respective literature under consideration.

During the reading of the selections the student is made to observe the essential difference between the view of life as portrayed in the literature studied as compared with the view portrayed in the English literature.

FRENCH

The following courses form a major in French; the first six form a minor.

101, 102, 103. **ELEMENTARY FRENCH.** (Beginner's French). Rudiments of grammar: pronunciation, with special emphasis on the international phonetic symbols; inflection, the elementary laws of syntax and their application. Translations of selections from modern prose writers, with constant reference to morphology and idiom. Drill in regular verbs and the more common irregular verbs.

Credit, 4 hours each term.

Fall, winter, and spring terms. T., W., Th., F. at 11:00. Jewell Hall.

Mr. CHRISMAN.

204, 205, 206. **INTERMEDIATE COURSE.** (Second year French). The reading of a comparatively large amount of not too difficult French chosen from modern short stories and plays. Such works as Daudet's short stories, the plays of Labiche, selections from De Maupassant, About, Loti, and others. Conversation and summaries in French. Review of grammar. Stress is laid on understanding the French without translation. It is the aim of this course to give a reasonable facility in the rapid reading of everyday French and a feeling for the spoken language together with the ability to write simple French with correctness.

Credit, 4 hours each term. French 101, 102, 103 or its equivalent of two years of high school French prerequisites.

Fall, winter, and spring terms. T., W., Th., F. at 8:45. Jewell Hall.

Mr. CHRISMAN.

307, 308, 309. **INTRODUCTION TO FRENCH CLASSICS.** (Third year French). In these courses time is divided between the reading of plays by Moliere, Racine, and Corneille and those of the romanticists such as Hugo, De Musset, and others. About 1,400 pages of text are read.

This course alternates with 310, 311, 312; 307, 308, 309 will be given in 1933-34.

Credit, 4 hours each term. French 204, 205, 206, or its equivalent prerequisite.

Fall, winter, and spring terms. T., W., Th., F. at 2:10. Jewell Hall.

PROFESSOR BYRNS.

310, 311, 312. **AN OUTLINE STUDY OF THE HISTORY OF FRENCH LITERATURE.** (Survey course.) A general survey of French literature from the beginning to 1900, with illustrative readings. Earnestly recommended to those who expect to major in French and wish to prepare for work on the M. A. degree in that subject. This course presupposes a good reading knowledge of French and the ability to follow the spoken language as well as to express oneself with remarkable ease in speaking and writing. Students who intend to take four years of French are advised to take this course before 307, 308, 309 if possible.

This course alternates with 307, 308, 309; 307, 308, 309 were given in 1931-32.

Credit, 4 hours each term. Open to juniors, seniors, and possibly sophomores who have completed the intermediate, or second year French.

Fall, winter, and spring terms. T., W., Th., F. at 2:10. Jewell Hall.

PROFESSOR BYRNS.

GERMAN

101, 102, 103. **ELEMENTARY GERMAN.**

German pronunciation, and German reading will be given from the first, alternating with the grammar lessons. This will give some acquaintance with the German life and people.

Grammar, by Thurnau; Reader, by Zeydel; followed by Immensee and L'Arrabiata—or similar stories.

Credit, 4 hours each term. Fall, winter, and spring terms, T., W., Th., F. at 8:45. Marston Hall.

PROFESSOR WEIDA.

204, 205, 206. **INTERMEDIATE.** (Second year German). Fall term is devoted to oral and written work. Review of grammar. Texts: Essentials of German—Vos; Nachlese—Diamond and Reinsch. In the winter term with the reading of about 250 pages of such authors as Storm, Sudermann, Rosegger is combined practice in oral and written composition. Spring term, text: German Science Reader—Hodge.

Alternates with 307, 308, 309; 307, 308, 309 were given in 1932-33.

Credit, 4 hours each team. German 103 prerequisite for 204, and 204 for 205 and 206.

Fall, winter, and spring terms. T., W., Th., F. at 9:40. Jewell Hall.

PROFESSOR BYRNS.

307, 308, 309. **INTRODUCTION TO GERMAN CLASSICS.** (Third year course). In the interest of those who may wish to major in German, this course is conducted as a survey course of German literature, accompanied with illustrated readings mainly from the classical period.

Alternates with 204, 205, 206. Given in 1933-1934.

Credit, 4 hours. Courses 101, 102, 103, or equivalent prerequisites.

Fall, winter, and spring terms. T., W., Th., F. at 9:40. Jewell Hall.

PROFESSOR BYRNS.

SPANISH

Nine terms of Spanish form a major. Six terms a minor.

101, 102. **ELEMENTARY SPANISH.** Grammar, reading, composition, and conversation. Texts: First Spanish Course—Hamilton—Van Horne, and Lectures Elementales—Luria.

Credit, 4 hours each term.

Fall and winter terms. M., T., W., Th. at 1:15, and T., W., Th., F. at 9:40 and 1:15. Jewell Hall.

PROFESSOR BYRNS AND MR. CHRISMAN.

103. **ELEMENTARY SPANISH.** Continuation of Spanish 101 and 102. Conversation and easy reading from well-known authors. Credit, 4 hours. Spanish 102 prerequisite.

Spring term. M., T., W., Th. at 1:15, and T., W., Th., F. at 9:40. Jewell Hall.

PROFESSOR BYRNS AND MR. CHRISMAN.

204, 205, 206. **SECOND YEAR SPANISH.** Review of grammar with abundant practice in composition in connection with the reading of Spanish texts. The last term is devoted especially to the reading and interpretation of modern Spanish literature with some composition. Texts: Spanish Composition—Crawford; works of Alarcon, Galdos, and other modern authors. Spanish Correspondence—Harrison.

Credit, 4 hours each term. Spanish 103 prerequisite.

Fall, winter, and spring terms. T., W., Th., F. at 11:00. Jewell Hall.

PROFESSOR BYRNS AND MR. CHRISMAN.

307, 308, 309. **ADVANCED SPANISH.** A short course in Advanced Spanish composition will be given in the fall term. In the winter and spring terms there will be reading from such authors as Galdos, Blasco-Ibanez, Martinez Sierra, Cervantes, Gorostiza, Pereda, etc. Conversation and outside reading.

Credit, 4 hours each term. Spanish 206 prerequisite.

Fall, winter, and spring terms. Hours to be arranged. Jewell Hall.

PROFESSOR CHRISMAN.

MUSIC

101, 102, 103. **MUSIC APPRECIATION.** A lecture course designed to enable the student to appreciate all forms of good music. A brief survey of the history of the art is made, and a number of great masterpieces are analyzed and studied.

Credit, 2 hours each term.

Fall, winter, and spring terms. T., Th. at 1:15. Jewell Hall.

PROFESSOR GROSCH.

110, 111, 112. **WOMEN'S GLEE CLUB.** Local concerts are given by the club and one or more concert trips are taken during the year.

Credit, 1-2 hour each term. For regularly enrolled college students.

Fall, winter, and spring terms. W. at 4:00. Jewell Hall.

PROFESSOR GROSCH.

104, 105, 106. **MEN'S GLEE CLUB.** This club makes at least one concert trip annually.

Credit, 1-2 hour each term. Open to regularly enrolled students.

Fall, winter, and spring terms. T. at 4:00. Jewell Hall.

PROFESSOR GROSCH.

107. **BAND.** The band is taken on a number of trips with the college football team and is used at many of the other athletic events and college activities.

Credit, 1-2 hour each term.

Fall, winter, and spring terms. Th. at 4:00. Jewell Hall.

PROFESSOR GROSCH.

Private lessons in voice and piano may be had under competent instructors. Application for private lessons should be made to the director of the department. The proximity to Kansas City affords exceptional opportunity for hearing noted visiting artists, opera, and symphony orchestras.

PHILOSOPHY

General Psychology and two terms of philosophy may be offered as a half minor in group III.

301. **INTRODUCTION TO PHILOSOPHY.** This course is designed to give the beginner a prospective of what philosophy is about and how it may help him. Text: Introduction to Philosophy—Cunningham.

Credit, 4 hours. Education 211 prerequisite.

Fall term. M., T., W., Th. at 1:15. Jewell Hall.

PROFESSOR FRUIT.

302. **HISTORY OF PHILOSOPHY.** Text: Students' History of Philosophy—Rogers.

Credit, 4 hours. Education 211 prerequisite.

Winter term. M., T., W., Th. at 1:15. Jewell Hall.

PROFESSOR FRUIT.

303. **LOGIC.** This is an elementary course in the study of the aims and methods of thinking. Text: Creighton.

Credit, 4 hours. Education 211 prerequisite.

Spring term. M., T., W., Th. at 1:15. Jewell Hall.

PROFESSOR FRUIT.

PHYSICAL EDUCATION

101. **PHYSICAL EDUCATION PRACTICAL.** Classes in the following forms of exercise will be organized: Basket ball, tennis handball, medicine ball, soccer, track, and football.

Credit, 1-2 hour.

Fall term. M., T., W., Th., F. at 11:00, 2:10, 3:05, and 4:00. One hour period three times a week comprises the course. Gymnasium.

PROFESSOR BOWLES.

102. **PHYSICAL EDUCATION PRACTICAL.** Boxing, wrestling, handball, medicine ball, soccer, gymnastics, indoor baseball, track, and basket ball will be given.

Credit, 1-2 hour.

Winter term. M., T., W., Th., F. at 11:00, 2:10, 3:05, and 4:00. One hour period three times a week comprises the course. Gymnasium.

PROFESSOR BOWLES.

103. **PHYSICAL EDUCATION PRACTICAL.** Basket ball, tennis, handball, track, football, medicine ball, soccer, and baseball will be given.

Credit, 1-2 hour per term.

Spring term. M., T., W., Th., F. at 11:00, 2:10, 3:05, and 4:00. One hour period three times a week comprises the course. Gymnasium.

PROFESSOR BOWLES

110, 111, 112. **PHYSICAL EDUCATION THEORETICAL.** For students who intend to teach and coach athletics.

Credit, 3 hours per term.

Fall, winter, and spring terms. M., W., F. at 1:15. Gymnasium.
PROFESSOR BOWLES.

107, 108, 109. **PRINCIPLES OF COACHING.** Bibliography, history, and development; equipment of teams, conduct of a season of football, basket ball, baseball games; track, and field athletics.

No one will be recommended for a position as athletic coach or director of athletics who has not completed these courses.

Credit, 2 hours per term. Actual participation in one of the major sports. Freshmen not admitted.

Fall, winter, and spring terms. T., Th., at 2:10. Gymnasium.
PROFESSOR BOWLES.

NOTE: All students in the freshman and sophomore classes are required to spend at least three hours per week in some form of athletic sport approved by the faculty. Credit toward graduation will be given at the rate of 1-2 hour per term. A maximum of six hours may be offered toward graduation in addition to the credit for courses 107 108, and 109, and 110, 111, 112. No student entering William Jewell as a freshman will be allowed to graduate without completing 3 hours in courses 101, 102, 103. Required of all freshmen and sophomores entering college September, 1929, and thereafter.

HYGIENE AND SANITATION

101, 102, 103. **HYGIENE AND SANITATION.** In these courses will be discussed the fundamental laws of health and the health relations of the individual to the community.

Required for graduation. Must be taken in the freshman or sophomore year unless deferred by advice of the registrar. This requirement will be made of all students entering college after June, 1924.

Credit, 1 hour per term.

Fall, winter, and spring terms. M. at 11:00. Marston Hall.
PROFESSOR BOWLES.

PHYSICS

Courses 101, 102, 103 and any six additional courses of physics form a major; courses 101, 102, 103, and any three additional courses form a minor.

The equivalent of physics 101, 102, 103 is required of all students entering medical or engineering schools, elective by all others.

Physics 204, 205, 206 comprise the second year of general physics and are required of all students entering technical schools. Students having had one year of physics and trigonometry may be admitted to second year physics.

101, 102, 103. **GENERAL PHYSICS.** The purpose of these courses is to give information in the field of mechanics, heat, sound, light, and electricity to the students desiring a general education. Text: Physics for Colleges—Millikan, Gale, and Edwards. Fee, \$2.50 per term.

Students offering physics for entrance may be admitted to physics 102 without physics 101.

Credit, 4 hours per term. For freshmen.

Fall, winter, and spring terms. Lectures, T, Th. at 11:00. Two laboratory periods per week. Marston Hall.

PROFESSOR DAVIS.

204. **MECHANICS.** This course includes a study of forces, machines, liquids, and gases. Particular attention given to applications of physics in field of engineering and science. Text: College Physics—Ferry. Fee, \$2.50.

Credit, 5 hours. Physics 103 and Mathematics 115a, 115b, or 101, 102, 103, or equivalent prerequisites. For sophomores.

Fall term. Lectures, M., W., F. at 9:40. Two laboratory periods per week. Marston Hall.

MR. VANTRUMP.

205. **SOUND, HEAT, AND ELECTRICITY.** Transmission of sound and heat by wave motion. A more advanced study of electricity, electrical measurements, etc. Text: College Physics—Ferry. Fee \$2.50.

Credit, 5 hours. Physics 204 prerequisite. For sophomores.

Winter term. Lectures, M., W., F. at 9:40. Two laboratory periods per week. Marston Hall.

MR. VANTRUMP.

206. **RADIOACTIVITY AND LIGHT.** The latest theories and developments in radioactivity. A study of light based on the transmission of energy by wave motion. Text: College Physics—Ferry. Fee, \$2.50.

Credit, 5 hours. Physics 205 prerequisite. For sophomores.

Spring term. Lectures M., W., F. at 9:40. Two laboratory periods per week. Marston Hall.

MR. VANTRUMP.

309. HEAT AND LIGHT. An advanced course in heat and light. This includes a study of thermometry, pyrometry, calorimetry, temperature regulation, vapor pressures and densities, thermodynamics, refractometry, photometry, polarimetry, and saccharimetry. Text: *Heat and Light for Advanced Students*—Edser. Fee, \$2.50.

Credit, 5 hours. Physics 205 prerequisite. For juniors and seniors.

Winter term. Lectures, conferences, and laboratory. M., T., W., Th., F. at 9:40. Marston Hall.

PROFESSOR DAVIS.

307. ELECTRON THEORY. Course includes the electron theory, discharge through gases, x-ray, radioactivity, principles of photography, heat and light. Atomic structure and other topics of importance in modern physics and chemistry. Recommended for all advanced students in chemistry and physics. Fee, \$2.50.

Credit, 5 hours. Physics 206 and chemistry 103a, or chemistry 206 and physics 103 prerequisite. For juniors and seniors.

Fall term. Lectures M., T., W., Th., F. at 9:40. Marston Hall.

PROFESSOR EDSON.

212. SURVEYING. In the classroom the theory of surveying will require about one hour per week. The rest of the time will be given to field work. This course requires a two-hour period. Text: *Surveying*—Breed and Hosmer. Fee, \$2.50.

Credit, 5 hours. Physics 103 and Mathematics 115a, 115b, or 101, 102, 103, prerequisite.

Spring term. M., T., W., Th., F. at 2:10. Marston Hall.

PROFESSOR DAVIS.

310a. ELECTRICITY AND MAGNETISM. This course is a preparation for electrical engineering and is required of all engineers. The fundamental principles underlying the generation, distribution, and use of electricity are discussed. Text: *Principles of Electrical Engineering*—Timbie and Bush. Fee, \$2.50.

Credit, 5 hours. Physics 206 and Mathematics 226 prerequisite.

Fall term. Lectures, conferences, and laboratory. M., T., W., Th., F. at 8:45. Marston Hall.

PROFESSOR DAVIS.

310. **DIRECT CURRENT ELECTRICITY.** Direct current machinery including dynamos, motors, coils, and batteries as well as the distribution and use of the current will be discussed. Text: Direct Current Machinery—Pender. Fee, \$2.50.

Credit, 5 hours. Physics 206 and Mathematics 226 prerequisites.

Winter term. Lectures, conferences, and laboratory. M., T., W., Th., F. at 8:45. Marston Hall.

PROFESSOR DAVIS.

311. **ALTERNATING CURRENT.** Theory and practice in the generation, transmission, and the use of alternating current. Text: Alternating Current—Timble. Fee, \$2.50.

Credit, 5 hours. Physics 310 prerequisite.

Spring term. Lectures, conferences, and laboratory. M., T., W., Th., F. at 8:45. Marston Hall.

PROFESSOR DAVIS.

In so far as possible all laboratory periods will be arranged from 2:10 to 4:00.

POLITICAL SCIENCE

202. **AMERICAN GOVERNMENT.** The Nation. A basic course dealing with the fundamental principles of political science and the organization, principles and functions of American government. Chief emphasis will be placed on the study of the United States Constitution and the science of government from a national viewpoint.

Credit, 4 hours.

Fall term. T., W., Th., F. at 8:45. Jewell Hall.

PROFESSOR SMITH.

203. **AMERICAN GOVERNMENT.** The States. An intensive study of the organization and development of state and local government will be made. The chief problems confronting state governments such as methods of election, initiative and referendum and other important state governmental questions will receive consideration.

Credit, 4 hours. Political Science 201 prerequisite.

Winter term. T., W., Th., F. at 8:45. Jewell Hall.

PROFESSOR SMITH.

201. **EUROPEAN GOVERNMENTS.** The constitutional or-

ganizations and practical workings of the principal governments of Europe.

Credit, 4 hours. Political Science 202 prerequisite.

Spring term. T., W., Th., F. at 8:45. Jewell Hall.

PROFESSOR SMITH.

SOCIOLOGY

Students intending to major in Sociology should take Education 211 in their Freshman year. It is further advised that at least one year of science should be Biology. A major shall consist of 36 term hours, which must include courses 201, 202 and 312, and may include Economics 203. The cognate minor shall include three terms of Economics and three terms of either History or Political Science.

201. INTRODUCTION TO SOCIOLOGY. A general introduction to the study of society, with particular emphasis upon the forces and processes by which social change takes place.

Credit, 4 hours. For sophomores.

Fall term. T., W., Th., F. at 9:40. Jewell Hall.

PROFESSOR HOWD.

202. SOCIAL PSYCHOLOGY. A study of the ways in which personality and group life are built up and function, with special emphasis upon the influence of group life in these processes.

Credit, 4 hours. Prerequisites, Sociology 201 and Education 211 or consent of instructor.

Winter term. T., W., Th., F. at 9:40. Jewell Hall.

PROFESSOR HOWD.

203. SOCIAL PATHOLOGY. A study of the maladjustments of society, such as poverty, dependency and delinquency; their causes, preventatives and proposed remedies.

Credit, 4 hours. Prerequisite, Sociology 202 or consent of instructor.

Spring term. T., W., Th., F. at 9:40. Jewell Hall.

PROFESSOR HOWD.

301. CHILD WELFARE. A study of the various problems of child welfare, particularly from the point of view of society.

Alternates with Sociology 304. 304 given in 1932-33.

Credit, 4 hours. Prerequisite, Sociology 201, and 202, or consent of instructor.

Fall term. T., W., Th., F. at 7:50. Jewell Hall.

PROFESSOR HOWD.

302. SOCIAL PROGRESS. A study of the origins and development of the major social institutions.

Alternates with Sociology 305. 305 given in 1932-33.

Credit, 4 hours. Prerequisites, Sociology 201, and 202, or consent of instructor.

Winter term. T., W., Th., F. at 7:50. Jewell Hall.

PROFESSOR HOWD.

312. SOCIAL THEORY. A study of social theory designed to aid the student in organizing his thinking and in testing his ideas about society.

Alternates with Sociology 306. 306 given in 1932-33.

Credit, 4 hours. Prerequisites, six courses in Sociology or consent of instructor.

Spring term. T., W., Th., F. at 7:50. Jewell Hall.

PROFESSOR HOWD.

304. THE FAMILY. A study of the family with particular emphasis upon the normal family and its problems.

Alternates with Sociology 301. 301 given in 1933-34.

Credit, 4 hours. Prerequisites, Sociology 201, and 202, or consent of instructor.

Fall term. T., W., Th., F. at 7:50. Jewell Hall.

PROFESSOR HOWD.

305. RACE RELATIONS. A study of some of the problems arising from the mingling of peoples, particularly in the United States.

Alternates with Sociology 302. 302 given in 1933-34.

Credit, 4 hours. Prerequisites, Sociology 201, and 202, or consent of instructor.

Winter term. T., W., Th., F. at 7:50. Jewell Hall.

PROFESSOR HOWD.

306. RURAL SOCIOLOGY. A study of social conditions in rural communities, their origins, causes and means for improvement.

Alternates with Sociology 312. 312 given in 1933-34.

Credit, 4 hours. Prerequisites, Sociology 201, and 202, or consent of instructor.

Spring term. T., W., Th., F. at 7:50. Jewell Hall.

PROFESSOR HOWD.

307, 308, 309. **RESEARCH SEMINAR.** The purpose of this course is to stimulate and guide majors in the department in the methods and achievement of independent research. Subject to be determined by the interest of the student and results are to be produced in thesis form.

Credit, 2 hours per term. Consent of instructor.

Any term. Meetings on conference basis, at least twice per week. Hours to be arranged.

PROFESSOR HOWD.

STUDENT ACTIVITIES

Y. W. C. A. An organization of all the girls in the college for religious and social activities.

Y. W. A. A College Young Women's Auxiliary is an organization devoted especially to missionary study.

The Student Volunteer Band. A group of boys and girls who have given their lives to definite Christian service.

The Ministerial Group is an organization of ministerial students. They meet for the purpose of religious discussion and devotion.

Publications. The *William Jewell Student* is published weekly by the student body. The *Tatler* is published annually by the Junior Class.

Musical Organizations. A band and two glee clubs are organized each year.

Theta Chi Delta is an organization of men and women devoted to the study of chemistry and related scientific subjects, honorary society—formerly Khem Club.

Beta Beta Beta. A national organization of advanced biology students is represented by the Lambda Lambda.

Beta Lambda. A women's organization of advanced biology students.

The International Relations Club devotes itself to the study of international problems.

The Jewell Playmakers Club is interested in theatrical entertainment in general and in stage representation.

Pi Kappa Delta. A national forensic honorary fraternity has a chapter in William Jewell College. Thirty intercollegiate debates are held annually.

Sigma Tau Delta. National organization of students who are interested in creative writing.

Gamma Pi Epsilon. An organization composed of editors of student publications.

J Club. An organization composed of men who have won their "J" in at least one of the major sports, such as football, basket ball, track, or tennis.

Sigma Pi Sigma. This is a national honorary physics fraternity. The local chapter was installed in 1931. The object of this fraternity is to promote interest in the advanced study of physics, to stimulate individual research work, to enable members to keep pace with the progress of this science, and to encourage a spirit of co-operation and friendship among those who have displayed marked ability in this study.

Pi Gamma Mu is a social science honor society. The local chapter was organized in 1931. The object of the society is to maintain and cultivate the interests of its members in the social sciences.

THE ALUMNI ASSOCIATION

Headquarters: Liberty, Missouri

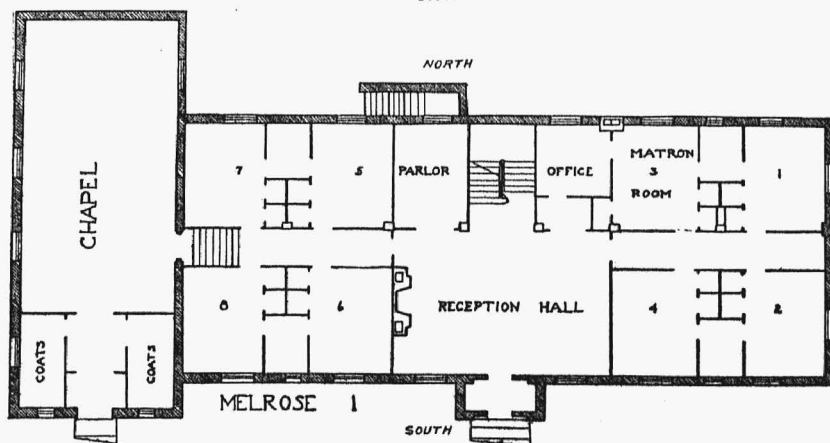
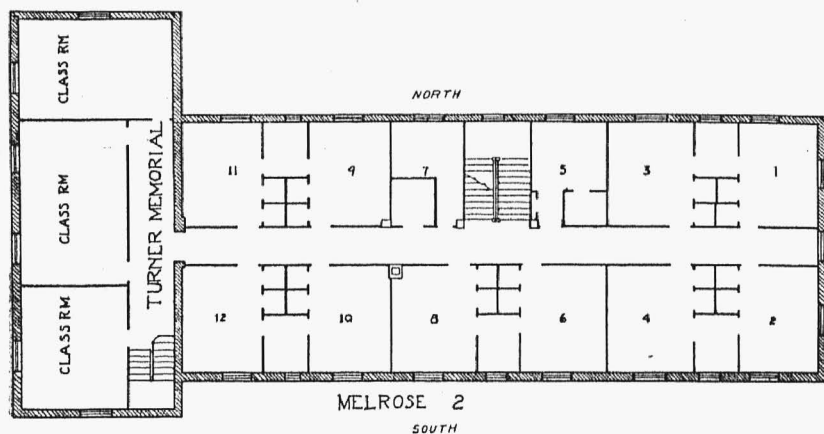
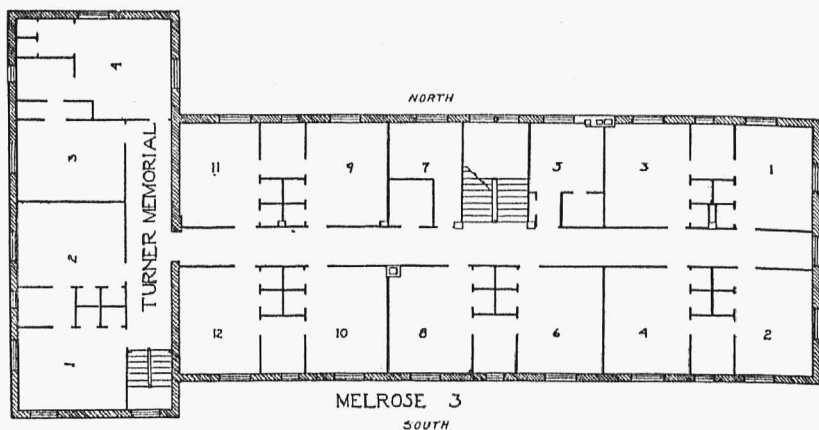
President: Chester J. Prince, St. Louis, Missouri,

Secretary: E. E. Kirkland, Liberty, Missouri.

Local associations are sustained in St. Louis, Kansas City, St. Joseph, Chicago, Denver, and Los Angeles.

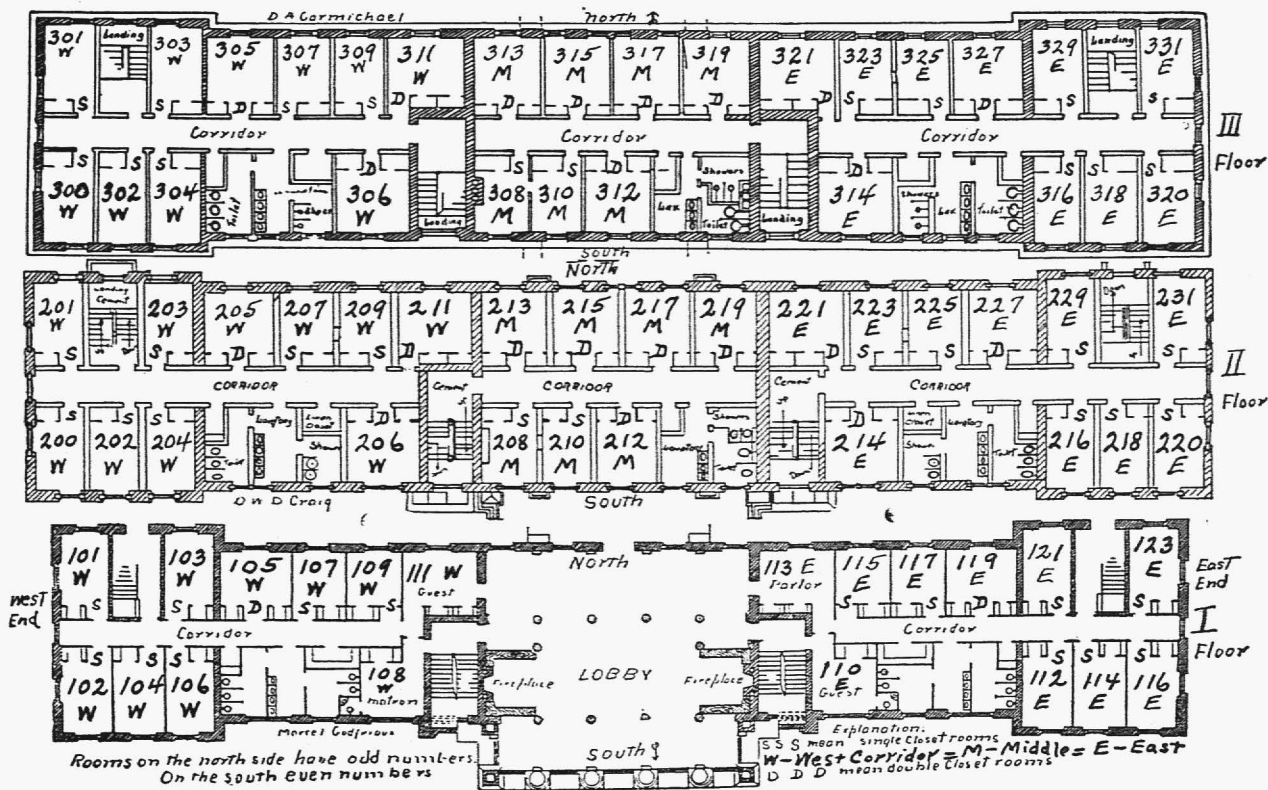
The future success of William Jewell College depends largely upon the efforts of the Alumni Association.

It is the desire of the Trustees and Faculty of William Jewell to secure a still closer co-operation of the alumni with the direct interests of the College. The alumni are urged to keep themselves informed as to the ideals, the policies and the needs of their Alma Mater, and to see that the institution is conducted on the highest plane of efficiency and economy, both as to administration and teaching.



Melrose Hall, Women's Dormitory

New Ely Hall, Men's Dormitory



PRICES FOR ROOMS PER TERM FOR EACH BOY

Description of rooms	Price for one student in room	Price each for two students in room
South rooms on east and west ends	\$35.00	\$25.00
North rooms on east and west ends	32.00	22.00
South single closet rooms.....	30.00	20.00
North single closet rooms.....	28.00	18.00
South double closet rooms.....	25.00
North double closet rooms.....	23.00

In the plat of New Ely dormitory single closet rooms will be marked S, and double closet, D.

PRICES FOR ROOMS PER TERM FOR EACH GIRL

Corner rooms, \$30.00. All other rooms, \$25.00.
 (There will be two girls in each room.)
 Permit to change rooms during the term, \$1.00.

SCHEDULE FOR 1933-1934

HOUR	FALL TERM			WINTER TERM			SPRING TERM		
	Courses	Prerequisites	Cr. Hrs.	Courses	Prerequisites	Cr. Hrs.	Courses	Prerequisites	Cr. Hrs.
7:50	Ed. 211		4	Ed. 211a	211	4	Ed. 213	211	4
	Eng. 308	230, 231	4	Eng. 309	230, 231	4	Eng. 310	Jun.	4
	Eng. 312	Seniors	4				Eng. 314	Sen. Ed. 211	4
							Eng. 315	230, 231	4
	Hist. 101	Fr.	4	Hist. 102r	101	4	Hist. 103	101, 102r	4
	Latin 107	3u	4	Lat. 108	107	4	Lat. 109	108	4
	Math. 336	226	5	Math. 331	226	5	Math. 332	331	5
				Math. 110	Fr.	3			
	Soc. 301	201, 202	4	Soc. 302	201, 202	4	Soc. 312	6 terms	4
	Span. 204	103	4	Span. 205	204	4	Span. 206	205	4
8:45	Bible 231	4 hrs. Hist.	4	Bible 232	4 hrs. Hist.	4	Bible 233	4 hrs. Hist.	4
	Econ. 302	202	4	Econ. 304	202	4	Econ. 305	202	4
	Ed. 318	213	2	Ed. 318a	213	2	Ed. 329	318	2
	Edu. 326	211	2	Ed. 327	211	2	Ed. 328		2
	Eng. 115	Fr.	4	Eng. 116	115	4	Eng. 117	115, 116	4
	Eng. 230	115, 116, 117	4	Eng. 231	115, 116, 117	4	Eng. 232	115, 116, 117	4
	French 204	103	4	French 205	204	4	French 206	205	4
	German 101	Fr.	4	German 102	101	4	German 103	102	4
	German 307	103	4	German 308	204	4	German 309	205	4
	Latin 104	2u	4	Lat. 105	104	4	Lat. 106	105	4
	Math. 101	2u	5	Math. 102	101	5	Math. 103	102	5
	Math. 111a	2u	3	Math. 111b	111a	3			
	Math. 115a	2u	2	Math. 115b	115a	2	Math. 117	111b, 115b	5
	Physics 310a	206, Math. 226	5	Physics 310	206, Math. 226	5	Physics 311	310	5
	Pol. Sci. 202	Soph.	4	Pol. Sci. 203	201	4	Pol. Sci. 201	202	4

SCHEDULE FOR 1933-1934 (Continued)

HOUR	Courses	Prerequisites	Cr. Hrs.	Courses	Prerequisites	Cr. Hrs.	Courses	Prerequisites	Cr. Hrs.
9:40	Astron. 121	Fr.	2	Astron. 122	121	2	Astron. 123	122	2
	Bible 108	Fr.	4	Bible 109	Fr.	4	Bible 110	Fr.	4
	Greek 311a	223	4	Greek 312a	311a	4	Greek 313a	312a	4
	Biol. 121	Fr.	5	Biol. 122	121	5	Biol. 123	Fr.	5
	Biol. 333	230	3				Biol. 333	230	3
	Biol. 333a	230	6				Biol. 333a	230	6
	Biol. 335	Soph.	2						
	Chem. 101a	Fr.	5	Chem. 102a	101a	5	Chem. 103a	102a	5
	Ed. 211		4	Ed. 211a	211	4	Ed. 213	211	4
	Ed. 314	213	4	Ed. 315	314	4	Ed. 316	315	4
	Eng. 230	115, 116, 117	4	Eng. 231	115, 116, 117	4	Eng. 232	115, 116, 117	4
	Eng. 301	Jrs. & Srs.	2	Eng. 302	301	2	Eng. 303	301, 302	2
	German 204	103	4	German 205	204	4	German 206	205	4
	Greek 324	223	4	Greek 329	223	4	Greek 330	223	4
	Latin 201	4u	4	Lat. 202	4u	4	Lat. 203	4u	4
	Math. 225	117	5	Math. 221	115b	2	Math. 226	225	5
				Math. 222	117	3			
	Physics 204	103, Math. 115b	5	Physics 309	205	5	Physics 206	205	5
	Physics 307	206, Chem. 103a	5	Physics 205	204	5			
	Span. 101	Fr.	4	Span. 102	101	4	Span. 103	102	4
	Soc. 201	Soph.	4	Soc. 202	Soph.	4	Soc. 203	201, 202	4

10:35

CONVOCATION

1:10	Bible 101a	Fr.	2	Bible 102a	Fr.	2	Bible 103a	Fr.	2
	Biol. 223	1 yr. Biol. and 1 yr. Chem.	4	Biol. 223a	223	4	Biol. 230	121, 122, 123	4
	Biol. 232	121, 122, 123	4	Biol. 229	232	4	Biol. 227	2 yrs. Biol.	4
	Biol. 234	121, 122, 123	4	Biol. 225	121, 122, 123	4			
	Biol. 335	121, 122, 123	2						
	Chem. 101a	Fr.	5	Chem. 102a	101a	5	Chem. 103a	102a	5
	Chem. 204	101a, 102a, 103a	5	Chem. 205	204	5	Chem. 206	205	5
	Edu. 324	Not Fr.	4	Edu. 321	Not Fr.	4	Edu. 318	211 or 213	4
	Edu. 320	Not Fr.	2	Edu. 320a	Not Fr.	2	Edu. 322	Not Fr.	2
	Edu. 321	Not Fr.	2	Edu. 321a	Not Fr.	2	Edu. 319	213	2
	Eng. 115	Fr.	4	Eng. 116	115	4	Eng. 117	115, 116	4
	French 101	Fr.	4	French 102	101	4	French 103	102	4
	Geol. 303	Biol. 121, 122, 123	2	Geol. 301	Phys. 103 or Chem. 103a	2	Geol. 302	301	2
	Greek 101	Fr.	4	Greek 102	101	4	Greek 103	102	4
	Hist. 210	103	4	Hist. 211	210	4	Hist. 208	103	4
	Hist. 301r	103	4	Hist. 302r	103	4	Hist. 212	210, 211	4
	Hist. 206	103	4	Hist. 207	103	4			
	H. and S. 101	Fr.	1	H. and S.	102, Fr.	1	H. and S. 103	Fr.	1
	Phys. 101	Fr.	4	Phys. 102	101	4	Phys. 103	102	4
	Ph. Ed. 101	Fr.	1/2	Ph. Ed. 102	Fr.	1/2	Ph. Ed. 103	Fr.	1/2
	Span. 204	103	4	Span. 205	204	4	Span. 206	205	4

NOON

1:15	Bible 101a	Fr.	2	Bible 102a	Fr.	2	Bible 103a	Fr.	2
	Chem. 313	206	5	Chem. 207	204	5	Chem. 316, 101a, 102a, 103a	5	
	Chem. 309	208	5				Chem. 208	204	5
	Econ. 201	Not Fr.	4	Econ. 202	201	4	Econ. 203	202	4
	Edu. 325	Not Fr.	4	Edu. 211a	211	4	Edu. 218	211	4
							Edu. 324		4
	Edu. 323	314	4	Edu. 323	314	4	Edu. 323	314	4
	Edu. 211		4	Eng. 116	115	4	Eng. 117	116	4
	Eng. 115	Fr.	4	Geol. 301	Phys. 103 or Chem 103a	2	Geol. 302	301	2
	Hist. 307	103	4	Hist. 308	103	4	Hist. 309	103	4
	Hist. 310	201	4				Hist. 313	Permit	4
	Latin 101	Fr.	4	Latin 102	101	4	Latin 103	102	4
	Music 101	Fr.	2	Music 102	Fr.	2	Music 103	Fr.	2
	Phil. 301	Edu. 211	4	Phil. 302	Edu. 211	4	Phil. 303	Edu. 211	4
2:10	Ph. Ed.	110 Permit	3	Ph. Ed. 111	Permit	3	Ph. Ed. 112	Permit	3
	Span. 101	Fr.	4	Span. 102	101	4	Span. 103	102	4
	Soc. 301	201, 202	4	Soc. 302	201, 202	4	Soc. 303	201, 202	4
	Bible 141b		2	Bible 142b		2	Bible 143b		2
	Engin. Dr. 101a	Fr.	2	Engin. Dr. 101a	Fr.	2	Engin. Dr. 101a	Fr.	2
	Engin. Dr. 102a	101a	2	Engin. Dr. 102a	101a	2	Engin. Dr. 102a	101a	2
	Engin. Dr. 103a	102a	2	Engin. Dr. 103a	102a	2	Engin. Dr. 103a	102a	2
	Engin. Dr. 204	103a	4	Engin. Dr. 205	204	4	Engin. Dr. 206	205	4
	Eng. 221	115, 116	2	Eng. 222	115, 116	2	Eng. 223	115, 116	2
	French 307	206	4	French 308	307	4	French 309	308	4
	Greek 221	103	4	Greek 222	221	4	Greek 223	222	4
	Ph. Ed. 101	Fr.	1/2	Ph. Ed. 102	Fr.	1/2	Ph. Ed. 103	Fr.	1/2
	Ph. Ed. 107	Permit	2	Ph. Ed. 108	Permit	2	Ph. Ed. 109	Permit	2
3:05	Span. 307	206	4	Span. 308	307	4	Ph. Ed. 115b		5
							Phys. 212	Math.	5
							Span. 309	308	4
	Eng. 218	117	2	Eng. 219	218	2	Erg. 220	219	2
	Latin 304	203	4	Latin 305	203	4	Latin 306	203	4
	Latin 307	203	4	Latin 308	203	4	Latin 309	203	4
	Latin 310	203	4	Latin 311	203	4	Latin 312	203	4
	Ph. Ed. 101	Fr.	1/2	Ph. Ed. 102	Fr.	1/2	Ph. Ed. 103	Fr.	1/2
	Eng. 238	Permit	2	Eng. 239	Permit	2	Eng. 240	Permit	2
	Music 104	Fr.	1/2	Music 105	Fr.	1/2	Music 106	Fr.	1/2
	Music 110	Fr.	1/2	Music 111	Fr.	1/2	Music 112	Fr.	1/2
	Music 107	Fr.	1/2	Music 107	Fr.	1/2	Music 107	Fr.	1/2
	Ph. Ed. 101	Fr.	1/2	Ph. Ed. 102	Fr.	1/2	Ph. Ed. 103	Fr.	1/2
4:00									

Courses listed in the catalog with hours to be arranged are not included in these schedules.

TABLE OF MAJORS AND THEIR PRESCRIBED MINORS

Prerequisites to Majors	Majors	Cognate Minor	Second Minor	Third Minor
Entrance units	Bible (Must include 3 terms of N. T. Greek)	6 terms in either Economics or Sociology, or 3 terms in each.	6 terms of Greek	6 terms of one subject or 3 terms each of two subjects from group II.
Entrance units	Biology	6 terms of chemistry or 3 terms of chemistry and 3 terms of physics or mathematics.	6 terms of French, German or Classical language.	6 terms of one subject or 3 terms each of two subjects from group III.
Entrance units	Chemistry	6 terms in one subject or 3 terms each in two subjects from group II.	6 terms of one subject or 3 terms each of two subjects from group III.	6 terms of German or French.
Entrance units	Education Prescribed Major	At least 36 hrs. in one subject other than education. This work must form a major.	At least 6 terms in one foreign language and 6 terms in one lab. science or three terms each in 2 lab. sciences are re- quired for graduation.	
Entrance units in- cluding at least 2 units of Latin	English	Two years of College Latin or two years of College Greek. One year of Latin if four years done in high school.	6 terms of one subject or 3 terms each of two subjects from group III.	6 terms of one subject or 3 terms each of two subjects from group II.
Entrance units	French	6 terms of one foreign language, other than French.	6 terms of one subject or 3 terms each of two subjects from group III.	6 terms of one subject or 3 terms each of two subjects from group II.

Entrance units	German	6 terms of one foreign language, other than German.	6 terms of one subject or 3 terms each of two subjects from group III.	6 terms of one subject or 3 terms each of two subjects from group II.
At least 2 units of Latin	Greek	6 terms of college Latin in advance of Latin 101, 102, 103.	6 terms of one subject or 3 terms each of two subjects from group III.	6 terms of one subject or 3 terms each of two subjects from group II.
Entrance units	History	3 terms of Political Science and 3 terms of either Economics or Sociology.	6 terms in one subject or 3 terms each in two subjects from group II.	6 terms of foreign language.
Entrance units including at least 2 units of Latin	Latin (6 years - of Latin including entrance Latin)	6 terms of one foreign language, other than Latin.	6 terms of one subject or 3 terms each of two subjects from group III.	6 terms of one subject or 3 terms each of two subjects from group II.
Entrance units including 1½ units algebra, 1 plane geometry	Mathematics	6 terms of physics or second year physics and 3 terms of some other science.	6 terms of one subject or 3 terms each of two subjects from group III.	6 terms of French or German.
Entrance units including 1½ units algebra.	Physics	3 terms of mathematics and 3 terms of chemistry, or 6 terms of mathematics.	6 terms of one subject or 3 terms each of two subjects from group III.	6 terms of one foreign language.
Entrance units	Sociology	3 terms of Economics and 3 terms of either History or Political Science.	6 terms of one foreign language.	6 terms of one subject or 3 terms each of two subjects from group II.
Entrance units	Spanish	6 terms of one foreign language, other than Spanish.	6 terms of one subject or 3 terms each of two subjects from group III.	6 terms of one subject or 3 terms each of two subjects from group II.

See plan of Majors and Minors on Page 25

SUMMER SESSION

1933

Announcements

*Summer Session Opens Monday, June 12
and Closes Friday, August 18*



Address all communications to
J. B. SULLIVAN
DEAN OF THE SUMMER SESSION
WILLIAM JEWELL COLLEGE
LIBERTY, MISSOURI

SUMMER SESSION 1933

CALENDAR

Summer Session begins Monday, June 12
Registration, Monday, June 12
Class work begins Tuesday, June 13
Registration permitted to June 20
First Term closes Friday, July 21
Registration second term Saturday, July 22
Summer Session closes Friday, August 18

FACULTY

JOHN F. HERGET, A.M., LL.D., President.

*JOHN PRIEST GREENE, A.M., D.D., LL.D., President-Emeritus.

ANCIENT LANGUAGES

ALLEN J. MOON, A.M., LL.D., (Howard College). Dean and Registrar.
Head of Department and Professor of Latin. Graduate work,
the University of Virginia and the University of Chicago.

FREDERICK M. DERWACTER, Ph.D., (Chicago).
Professor of Greek.

BIBLE

H. I. HESTER, Th.D., (Southern Baptist Theological Seminary).
Head of Department and Professor of Bible and Religious Educa-
tion.

BIOLOGY

CLARENCE JEROME ELMORE, Ph.D., (Nebraska).

Head of Department and Professor of Biology.

HELEN CHURCHILL, A.B., (Kansas University).

Instructor in Biology.

Graduate work, University of Kansas and University of Chicago.

CHEMISTRY

GEORGE F. WEIDA, Ph.D., (Johns Hopkins).

Head of Department and Professor of Chemistry.

FRANK G. EDSON, A.M., (University of Colorado).

Associate Professor of Chemistry.

Graduate work, Colorado University.

*Died March 10, 1933.

EDUCATION

J. B. SULLIVAN, PH.D., (George Washington University).

Head of Department and Professor of Education.

THURSTON ISLEY, M.ED., (University of Kansas).

Associate Professor of Education.

Graduate work, University of Kansas.

ENGLISH AND PHILOSOPHY

JOHN PHELPS FRUIT, PH.D., (Leipzig).

Head of Department and Professor of English Literature, and of Philosophy.

P. CASPAR HARVEY, A.M., (William Jewell).

Professor of English Composition.

One summer's study, the University of Chicago.

VIRGINIA D. RICE, A.M., (University of Kansas).

Instructor in English.

Graduate work, University of Kansas.

W. PREWITT EWING, A.B., (William Jewell).

Instructor in English and Coach of Debate.

Graduate work, University of Kansas.

HISTORY AND POLITICAL SCIENCE

W. HOLT SMITH, PH.D., (Chicago).

Head of Department and Professor of History and Political Science

ULMA R. PUGH, A.M., (Baylor).

Associate Professor of History.

Graduate work, University of Iowa.

MATHEMATICS AND ASTRONOMY

B. EDWARD DENTON, A.M., (George Peabody College).

Head of Department and Professor of Mathematics.

JOSEPH VANTRUMP, A.B., (William Jewell).

Instructor in Mathematics. Graduate work, University of Missouri.

FRENCH AND GERMAN

CONSTANTINE BILA, Docteur de l' Université de Paris.

Head of Department and Professor of French and German.

CLARENCE G. CHRISMAN, A.M., (University of Kansas).

Assistant Professor of French.

One year's study in Universities of Madrid and Paris.

SPANISH

ARTHUR GROVER BYRNS, A.M., (University of Kansas).

Head of Department and Professor of Spanish.

CLARENCE G. CHRISMAN, A.M., (University of Kansas).

Assistant Professor of Spanish.

One year's study in Universities of Madrid and Paris.

MUSIC

DAVID GROSCH.

Head of Department and Professor of Music.

Taught in Chicago Musical College, Bush Conservatory, and was Dean of Conservatory of Music, Baker University. Studied voice with Adolph Schulze of Berlin, piano with John Petrie Dunn of Edinburgh, oratorio with Dr. Charles Allum of London, opera with Hermann Devries of Chicago, and composition with Samuel DeLange of Stuttgart, Germany.

PHYSICAL EDUCATION

ROBERT EARL BOWLES, A.B., (William Jewell).

Head of Department and Athletic Director. Two summers' work at the University of Wisconsin and one summer at Lake Geneva, Wisconsin, in Physical Education.

WILLIAM N. COLLINS, B.S., (Missouri).

Athletic Coach. One summer's work in Illinois Coaching School.

PHYSICS

JOHN E. DAVIS, A.B., (William Jewell).

Head of Department and Professor of Physics. Graduate work, University of Chicago.

JOSEPH VANTRUMP, A.B., (William Jewell).

Instructor in Physics. Graduate work, University of Missouri.

SOCIAL SCIENCE

C. R. HOWD, PH.D., (California).

Head of Department and Professor of Social Sciences.

ULMA R. PUGH, A.M., (Baylor).

Associate Professor of Economics.

Graduate work, University of Iowa.

ADMISSION AND CREDITS

The requirements for entrance are either graduation from an accredited high school or fifteen high school units properly distributed.

The work offered in summer school may be credited on the A. B. degree and on teachers' certificates granted by the state superintendent of public instruction, except as specified in connection with courses.

TEN SEMESTER HOURS MAY BE MADE IN THE ENTIRE SESSION.

SIX SEMESTER HOURS MAY BE MADE IN THE FIRST SIX WEEKS.

TEACHERS' CERTIFICATES

William Jewell students wishing teachers' certificates may procure them through the registrar's office of William Jewell College. These certificates are issued by the Superintendent of Public Instruction at Jefferson City upon receipt of the student's college record.

PURPOSE

The Summer Session of William Jewell College is designed to meet the needs of the following persons: (a) college students desirous of securing additional credits that they may hasten graduation; (b) teachers wishing to secure credits leading to both elementary and secondary certificates offered by the State Department of Education; (c) graduates of high schools wishing to pursue college work.

BUILDINGS AND EQUIPMENT

The entire plant of the college, in so far as it is needed, will be at the disposal of the summer school. (See page 13.)

BOOKSTORE

The College maintains a co-operative bookstore where books and other supplies may be purchased.

COURSES OF INSTRUCTION

Credits are given in semester hours. If a student remains only six weeks in a course his credits will be three-fifths of that of the ten weeks. Avoid conflicts in choosing courses.

Courses in the following Departments will be offered: Education and Psychology (Elementary and Secondary), English, Latin, History, Mathematics, Modern Languages, Physical Education, Physics, Political Science, Sociology, and Commercial Courses.

DORMITORIES

William Jewell College has two well equipped dormitories which will accommodate 250 students. Melrose Hall, for girls, will be operated during the summer session, provided a sufficient number of women students desire its accommodations to justify its operation. Girls wishing to live in Melrose Hall during summer school should send five dollars to Professor J. E. Davis, Business Manager, as part payment on the rent to reserve a room. Reservations should be made as early as possible, not later than June 1.

Private families: There are also many comfortable homes in Liberty where rooms may be had from \$7.50 to \$15.00 per month. Board in private families is procurable at \$5.50 to \$6.50 per week.

Note: Rooms in dormitory are furnished with all necessary equipment except linens and bed clothes.

Homes in which girls live during the summer school must be approved by the Dean of the Summer Session.

APPROXIMATE EXPENSES

	Ten Weeks	Six Weeks	Four Weeks
Tuition.....	\$40.00	\$25.00	\$16.00
Tuition—Two courses..	20.00	15.00	10.00
Tuition—One course...	12.50	8.00	5.00
Student Activity Fee			
(Including library and			
gymnasium fees.)....	4.00	2.50	2.00
Chemistry Lab. Fee....	10.00	6.00	
Physics Lab. Fee.....	7.50	5.00	
(Entire Triple Course)			
Room and Board in			
Dormitory.....	65.00	40.00	27.50

DEGREES CONFERRED MAY 31, 1932

BACHELOR OF ARTS

Albright, Ray Donald.....	121 Leonard, Liberty
Anderson, Russell Arthur.....	Webb City
Baker, Vernie Mae.....	Pattonville
Bauer, Frank M.....	1622 Main, Lexington
Benson, George Edward, jr.....	211 E. 13th St., Mission, Texas
Berberabe, Pedro Mendoza.....	Batangas, Philippine Islands
Berquist, Millard John.....	34 N. Thorpe, Kansas City, Kansas
Bridges, George Bethune.....	505 S. Main, Charleston
Brown, Virginia May.....	3114 Penn. St. Joseph
Bruner, Wilbur.....	Liberty
Carlson, Winfield E.....	4405 Main, Kansas City
Carmichael, James W.....	Odessa
Cleland, Laurence William.....	Buffalo
Condon, Ermon William.....	Cairo
Connelly, Zelda Pauline.....	Liberty
Conway, James Scott.....	Monroe City
Cunningham, Chester Bewick.....	1025 Bales, Kansas City
Cunningham, Jesse.....	Sheldon
Demmel, Clyde Kenyon.....	518 Rhey, Waterloo, Iowa
Estes, Emma Elizabeth.....	1844 W. Walnut, Springfield
Eubanks, Seaford Bill.....	Monett
Forderhase, Earl A.....	Higginsville
Gill, Ruth.....	Liberty
Goings, Loren Samuel.....	Maywood
Green, Harry F.....	Waynesville
Hamilton, Raymond Forest.....	769 Van Buren, Gary, Indiana
Hartung, Elda Marie.....	4041 College, Kansas City
Hedberg, Ben Hollenback.....	503 E. Park, Olathe, Kansas
Hollis, Harvey Wright.....	911 N. Walnut, Oklahoma City, Okla.
Humphrey, Esther Marie.....	East Leavenworth
Hunter, Sheldon Brown.....	Holt
Judd, Raymond.....	Decatur, Georgia
Keathley, Clarence Ray.....	Ironton
Kincaid, Arthur Roy.....	Liberty
Milam, Don J.....	628 S. Alleghany, Tulsa, Oklahoma
Moore, Adah Catherine.....	2007 Benton, Kansas City
Morrow, Elman A.....	Independence

• Nebgen, John O.....	Oak Grove
• O'Neill, Cecil Dale.....	Beaman
• Payne, Houstin.....	Liberty
• Quisenberry, Martha Carolyn.....	616 W. 63rd St., Kansas City
• Rolf, Floyd Herman.....	Liberty
• Russell, Verlia Short.....	1015 W. White Oak, Independence
• Sanders, Harold Glen.....	Webb City
• Schooley, J. Calvin.....	Odessa
• Selves, Henry Arthur.....	Liberty
• Singleton, Charles Howard.....	Gower
• Stokes, Elvah Allen.....	Clever
• Stokes, Mrs. Elvah Allen.....	Clever
• Summers, Carl Leslie.....	105 Myrtle, Monett
• Tandy, Marjorie.....	10 St. Louis Ave., Fulton
• Temkov, John Mihailon.....	Sofia, Bulgaria
• Tracy, Dean Calvin.....	Laredo
• Whaley, Charles.....	Liberty
• Whitwer, Amel William.....	Liberty
• Woodson, Samuel Meade, jr.....	Liberty

The following students have completed their work within the time limit fixed by the Faculty and have received the degree of Bachelor of Arts "As of the class of 1932."

• Baker, William T.....	4330 Bingham, St. Louis
• Blythe, John D.....	Clinton
• Brown, Roy F.....	405 N. Spring, Independence
• Brueckmann, Lillian M.....	1514 E. 49th St. Ter., Kansas City
• Carter, H. Newton.....	710 Sloan, Crawfordsville, Indiana
• Forbis, Homer L.....	628 1-2 Barry, Chicago, Illinois
• Fromm, Emanuel.....	Topeka, Kansas
• Hendrex, Orien B.....	Liberty
• Hirni, Paul R.....	Rockville
• Jennings, Hazel I.....	Marble Hill
• Payne, Weslie.....	Liberty
• Vaughn, Agnes L.....	Blue Springs

The following student was enrolled in William Jewell College after the printing of the catalog during the year 1931-32.

SENIOR

Lusk, Lena May..... 1932. ↙ Highland, Kansas

Students Enrolled in William Jewell College

1932-1933

SENIORS 1932-33

Baird, Bill Kendall.....	Excelsior Springs
Barr, Raymond N.....	302 S. Elmwood, Kansas City
Beckham, Roy Edwin.....	Cuba
Beets, James Daniel, jr.....	641 S. Park, Independence
Bell, Gertrude Wood.....	16 Fairview, Liberty
Billings, Heywood Sherman.....	20 Crystal Ave., Crystal City
Biven, Earl Theodore.....	Bolivar
Bower, H. Virgil.....	111 S. Glenwood, Springfield, Ill.
Bowles, Edna Lucille.....	304 W. Kansas, Liberty
Brammer Sarah Margaret	502 N. Delaware, Butler
Bruner, Mildred Evelyn.....	117 Suddarth, Liberty
Burnham, Otho Ray.....	593 E. Mill, Liberty
Casteel, Rolla William.....	Camden
Clark, Ben C.....	133 Lincoln, Liberty
Cochran, Theodore.....	Liberty
Cowherd, Raymond Gibson.....	4004 Park, Kansas City
Darrow, Roland E.....	Buckner
Dennis, James Noel.....	Clifton Hill
Ditzen, Lowell Russell.....	2705 N. 37th St., Kansas City, Kans.
Douglas, Paul Lowell.....	601 N. Gallatin, Liberty
English, Sam Gribble.....	Burlington, Wyo.
Ennis, Helen Elizabeth.....	27 E. 70th Terrace, Kansas City
Gottman, William Edward.....	Monroe City
Grabenchik, Jack Selig.....	268 Lehigh Ave., Newark, N. J.
Griffey, R. Christine.....	419 Harrison, Liberty
Hall, Charles Wilbur.....	481 E. Kansas, Liberty
Hardin, V. S.....	205 E. Clay, Albany
Hastings, Rayburn Beeson.....	708 Magnolia, Excelsior Springs
Hepler, Kathryn Elizabeth.....	Liberty
Hilton, Wallace Atwood.....	Hardin
Hopner, Eugene William.....	Brunswick
Hulsey, Frances Kathryn.....	Smithville
Jansen, Whitney Claire.....	468 S. Indiana, Kankakee, Ill.
Knight, Iven Robert.....	Osceola
Kreis, Gertrude Dorothy.....	1008 Monroe, Mendota, Ill.

Liston, Robert Lee.....	1013 McPherson, Trenton
Maul, Chester L.....	303 N. Chelsea, Kansas City
Millen, James Franklin.....	233 W. Kansas, Liberty
Miller, Helen Gould.....	Liberty
Moore, Thomas.....	Morris, Okla.
Morrison, Grace.....	120-a W. Promenade, Mexico
Morse, Fred Eugene.....	225 Vine, Waterloo, Iowa
Munsey, Edward Jackson.....	805 E. 9th St., Trenton
Nulf, Ross William.....	829 Franklin, Moberly
Oldfield, Clarence LeRoy.....	1018 Pioneer Ave., Turlock, Calif.
Payne, Zena Elizabeth.....	Route 1, Liberty
Peebles, Harvey Stanford.....	Crystal City
Potter, Ruth Elizabeth.....	124 N. Water, Liberty
Quarles, Thelma Jane.....	18 W. Brown, Liberty
Reynolds, Raymond Vern.....	Crystal City
Rudloff, Anthony Charles.....	Festus
Sharp, David Addison, jr.....	202 W. Franklin, Liberty
Sharp, William Edward, jr.....	210 S. 3rd St., Lamar, Colo.
Sherrill, Owen Milas.....	Kennett
Shook, Charles Louis.....	455 Alvy Place, Pasadena, Calif.
Smith, Marion Rufus.....	2509 Hardesty, Kansas City
Stephens, Genter Leroy.....	424 Wilson, Liberty
Swenson, Orvar.....	108 N. Park, Independence
Timmons, John Omer.....	Williamstown
Walker, J. T.....	Holt
Watson, William Alanzo.....	617 Rudd Ave., Canon City, Colo.
Webb, Walter Elbert.....	Oak Grove
Westbrook, Cornelius Albert.....	12 Franklin, Charleston, S. Carolina
Wigger, Harry Chester.....	7208 Pennsylvania Ave., St. Louis
Woolfolk, Charles Walter, jr.....	Liberty
Woods, Kemp Minor.....	464 Morse, Liberty

14 Women, 52 Men

JUNIORS 1932-33

Adams, Millicent Rue.....	329 S. Missouri, Liberty
Alexander, Francis Winburn.....	1207 S. Main, Independence
Allen, Robert Ellis.....	Powersville
Ash, A. Russell.....	121 W. 6th St., Cordell, Okla.
Beck, Burton Detjen.....	1931 S. 91 St., West Allis, Wisconsin
Bennett, Harold Owen.....	Carthage

Bittle, Clifford Earl	3816 Folsom, St. Louis
Blain, Bernard Edwin	321 W. Kansas, Liberty
Bollinger, Robert Lee	742 Magnolia, Excelsior Springs
Bowman, Georgia Bessie	Bonne Terre
Byler, Roger Louis	Route 1, Jamestown
Christian, Leslie G.	Route 5, Windsor
Crossett, Wilma Wilson	Excelsior Springs
Davis, William E., jr.	209 W. N. Main, Richmond
Dawson, Wilfred Scott	305 S. Oaks, Monroe City
Dunn, Dorothy May	2213 Agency Road, St. Joseph
Durbin, Carl Columbus	910 Pleasant, Santa Paula, Calif.
Farris, James William	407 3rd St., Boonville
Fightmaster, Bernard Arthur	218 Pine, Liberty
Hagood, J. Hurley	604 Pine, Hannibal
Hall, John Matthew	45 Fremont Ave., S. I., New York, N. Y.
Hamilton, Garvin Vernon	2 W. 52d St., Kansas City
Hanback, Geneva May	522 S. Missouri, Liberty
Harner, Denten Daniel	Plattsburg
Hickman, Ruby Glenn	Princeton
Hicks, George Elmo	510 N. Vine, Monroe City
Hood, Howard Jack	100 S. Taylor, California
Hume, Vera Lee	Marshall
Jennings, Chase Willis	1219 N. 9th St., St. Joseph
Jochum, Everett Wright	336 Spruce, Pierce City
Lewis, Howard Hadley	Florence
Long, Earl Jefferson, jr.	111 E. 8th St., Caruthersville
Long, Lee B.	538 E. Mill, Liberty
Longfellow, Earl Christian	Route 2, Bedford, Iowa
McAdow, Dorothy Mabel	875 Washington, Weston
Maddox, Arthur Lindon	331 Laura, Wichita, Kansas
Mason, Mildred Peace	N. Gallatin, Liberty
Medlin, Shad T.	10th & Duquesne, Joplin
Moore, William W., jr.	308 N. Main, Carrollton
Neal, James Kenneth	220 S. Ault, Moberly
Norris, Charles Leonard	Route 5, Box 249, Ft. Collins, Colo.
Owen, William Lee	904 Locust, Boonville
PerLee, Alice	511 W. Franklin, Liberty
Pielstick, Mrs. Margaret May	Cumro, Nebr.
Poloson, Nicholas Long	3313 Michigan, East Chicago, Ind.
Pratt, Eugene Talmadge	1019 E. 3rd St., Sedalia
Ramirez, Donato Ruiz	2121 Belleview, Kansas City

Rapson, Elinor Ann.....	407 Benton, Excelsior Springs
Roark, William Oscar.....	Tipton
Sanders, Leslie Earl.....	502 N. Walker, Webb City
Shrum, Beecher Bowman.....	Route 6, Windsor
Smith, Glenn Elree.....	1043 Montie Road, Lincoln Park, Mich.
Stanley, Berry Wall.....	Richmond
Stone, Elizabeth Pryor.....	204 N. Franklin, Liberty
Stuart, Lillian Virginia.....	120 Terrace, Liberty
Summers, Walter Bruce.....	Palmyra
Sutton, William Russell.....	Route 5, Sedalia
Trowbridge, Woodrow Robinson.....	2814 Hubbard, Hannibal
Uchiyama, Yasushi.....	Orio, Japan
Utter, Marvin Earl.....	2702 Lake Blvd., St. Joseph
VanDeMark, Charles Cleveland.....	526 W. 9th St., Concordia, Kansas
Walser, Alvin Glenn.....	Holt
Weber, Paul.....	624 E. McCarty, Jefferson City
Whaley, Mrs. Nellie Ernestine.....	4442 Euclid Ave., Kansas City
Wiley, Henry Ward.....	3802 Indiana, Kansas City
Wright, Esther May.....	1091 E. 15th St., Independence
Young, Forrest Luke.....	Watson, Pa.
Young, Raleigh Garvey.....	136 W. Fulton, Stockton, Calif.
16 Women, 52 Men	

SOPHOMORES 1932-33.

Albright, Mable Bernita.....	216 S. Jewell, Liberty
Allen, Cyrus Kendall.....	Rothville
Alspaugh, Glen.....	Liberty
Bailey, Margaret Evalyn.....	156 West 5th St., Sheridan, Wyo.
Baird, Mary Garnett.....	Excelsior Springs
Baker, Ida Charlene.....	Leeton
Ballew, Ralph Wilson.....	Liberty
Bauman, Henry Charles.....	3004 S. 28th St., St. Joseph
Belles, Mary Elizabeth.....	Route 2, Liberty
Bennett, Mrs. Vernice.....	Carthage
Billups, Frances Marian.....	875 Newport, Webster Groves
Blair, Margaret Gilchrist.....	142 Grandview, Richmond
Brimer, James Hulen.....	121 Gallatin, Liberty
Brown, Edward Benjamin.....	Liberty
Brown, Wilson Gordon.....	Bosworth

Christian, Helen Arwilda.....	Darlington
Cockrill, Joe Brown.....	Platte City
Coen, Orville Chester.....	Jamesport
Corse, John T., jr.....	Wellington
Cröse, Paul Tyson.....	Bosworth
Crouch, Adoniram Judson.....	Liberty
Crutchfield, John Aubrey.....	Clifton Hill
Cumpton, Ralph L.....	Leon, Kansas
Curry, Alvin Blayne.....	516 W. Vine, Arkansas City, Kansas
Davidson, James Campbell.....	Route 4, North Kansas City
Devling, Erna Lucille.....	North Kansas City
Duncan, Donald Neil.....	2103 Benton St., Boone, Iowa
Elmore, Walter Eugene.....	316 Centennial, Bowling Green
Ennis, Edna May.....	27 E. 70th Terrace, Kansas City
Erb, Cyril Leonard.....	314 Logan, Council Bluffs, Iowa
Fenner, Franklin Arnold.....	720 Grand Ave., Grand Junction, Colo.
Fisher, Earnest Paul.....	727 6th Ave., Antigo, Wisconsin
Fordham, Buford.....	208 W. Heidel, Carrollton
Fox, Beulah Edith.....	Pollard, Ark.
Gaines, John Carl.....	Route 1, Rayville
Garnett, William Calvin.....	521 N. Fourth St., Hannibal
Grant, Herman Guthrie.....	Lathrop
Haley, Nadine Kathryn.....	Route 2, Boonville
Hall, Lucille.....	118 N. Water St., Liberty
Hamilton, Susan Robinson.....	2 West 52d St., Kansas City
Hammon, George Everett.....	1006 Center, Hannibal
Heinlein, Frances Elizabeth.....	109 N. High St., Butler
Helton, John Wayne.....	Cainsville
Hensley, J. Clark.....	117 N. Lightburne, Liberty
Howard, Sarah Louise.....	416 E. Kansas, Liberty
Hufft, Ernest Collins.....	433 Miller Ave., Liberty
Huzar, Elias.....	Jamesport
Ingle, Miriam Ruth.....	Bondurant, Iowa
Jarvis, Leslie Gordon.....	4037 Woodland Pk., Seattle, Wash.
Jennings, Cyrena Belle.....	1219 N. 9th St., St. Joseph
Jeter, Kenneth Reid.....	Slater
Johnson, Louis Albert.....	80th and State Line, Kansas City
Jones, Glenn Wiley.....	202 E. Franklin, Liberty
Kirchner, Nicholas Eugene.....	Oxford, Nebr.
Layle, Jessie Woodrow.....	510 E. Mason, Odessa
Long, Margaret Blanche.....	6524 Berthold, St. Louis

Lyon, Robert.....	424 E. Lexington, Richmond
McDougall, Merrill Patten.....	519 Franklin, Liberty
McKee, Woodrow R.....	Polo
Majors, Fredrick Louis.....	Pierce City
Martin, Allen.....	Forest City
Masters, Herbert Oliver.....	3306 E. 14th St., Kansas City
Mertz, William Maurice, jr.....	980 Lake Shore Drive, Grosse Pointe Shores, Mich.
Milam, Marcus Larry.....	481 S. Darlington, Tulsa, Okla.
Morgan, Ann Leslie.....	300 E. Armour, Kansas City
Muchmore, Cloyd Elroy.....	218 E. 14th St., Appleton City
Norris, Lyman Worcester.....	Route 5, Box 249, Ft. Collins, Colo.
Offutt, Thelma Lou.....	11426 Winner, Independence
Page, C. W.....	Excelsior Springs
Parker, Elizabeth Susan.....	400 W. Clarinda, Shenandoah, Ia.
Payne, Edna Harman.....	Liberty
Pettus, James Lawrence.....	Belton
Pielstick, Don Franklin.....	Cumro, Nebr.
Probst, Theodore J.....	Jackson
Quorollo, Helen Bess.....	304 N. Pleasant, Independence
Ray, Robert Lee.....	224 Kimball, Excelsior Springs
Rice, Wilson.....	Elsberry
Robertson, Arthur M.....	413 E. Main, Odessa
Rosier, Harold A.....	Belton
Salisbury, Thelma Eunice.....	625 S. Crysler, Independence
Schmitt, Louise Katherine.....	616 Mill, Liberty
Settle, Christopher Garner.....	221 West Main, Richmond
Shannon, Virginia Malvina.....	Ewing
Shapiro, Abe.....	3701 Garner Ave., Kansas City
Shrewsbury, Harriet Guild.....	Elk Falls, Kansas
Simon, Hazel Maurine.....	320 E. 40th, Kansas City
Smith, Charles Hubert.....	Union Star
Stoltzfus, Homer Howard.....	Box 47, Avondale
Stone, Mary Evelyn.....	837 W. 71st Terrace, Kansas City
Sutherland, Lon Monroe.....	5432 Raytown Road, Raytown
Swetnam, Martha Ellen.....	Smithville
Swindler, Vera Dell.....	Braymer
Thompson, Melvin Albert.....	125 N. Leonard, Liberty
Trabue, James Robert.....	Pleasant Hill
Tripp, Ramona Madeliene Whitaker.....	1912 Clay, St. Joseph
Van Trump, Susan Frances.....	152 S. Leonard, Liberty

Vawter, Shirley Ellen.....	Neosho
West, Elizabeth Eagle.....	Route 1, Box 87, Vinita, Okla.
Whitsitt, Earl Clifford.....	Kansas City, Kansas
Wilks, Dorothy Dinsmore.....	3934 Flora Ave., Kansas City
Williams, Edgar Alfred.....	Route 3, Sedalia
Williams, John Henry.....	Liberty
Wilson, Bernice Elizabeth.....	Bethel, Kansas
Woodson, John Soister.....	Liberty
Wornall, Sue.....	Route 3, Liberty

40 Women, 64 Men

FRESHMEN 1932-33

Albro, Oscar Bruce	706 "D" Street, N. W., Ardmore, Okla.
Anderson, Julian.....	120 Terrace, Liberty
Ankerson, Lewis Eugene.....	1515 E. 50th Terrace, Kansas City
Atwood, Marian.....	Route 3, Liberty
Atwood, Sam.....	Route 3, Liberty
Aull, Forrest J.....	Excelsior Springs
Basye, William Edwin	143 E. Pacific, Independence
Beck, Frank Carter	2019 Swope Parkway, Kansas City
Bell, David Edwin.....	115 W. Kansas, Liberty
Bell, Edward Hunt.....	115 W. Kansas, Liberty
Bessmer, Robert Michael	Independence
Bowman, Abner Bruce.....	200 W. Washington, Harrisonville
Brady, Edwin Francis.....	Warsaw
Burch, Mary Belle	Braddyville, Iowa
Carlin, Maude M.	Granby
Carter, Leland Farley.....	Odessa
Childers, Albert Layle.....	403 S. Pleasant, Independence
Christian, Mrs. Leta Chastain	Route 1, Lincoln
Coates, John Batey.....	Liberty
Combs, Harold Hartman.....	Lathrop
Compton, Owen Gault.....	1502 E. 49th Terrace, Kansas City
Cooley, Sarah Margaret.....	North Kansas City
Cooper, Ralph Allen	214 Jefferson, Liberty
Crum, Forrest Ben.....	Richfield, Liberty
Curtis, Flora Allison	426 S. River, Independence
Davidson, Margaret Hazel.....	215 Gray, Chaffee
Davidson, William Campbell, jr.	North Kansas City
Davis, John Kimzey.....	425 Miller Ave., Liberty
DeMasters, Ray.....	Route 1, Liberty

DeMasters, Robert S.....	Route 1, Liberty
Ditto, Flora Vella.....	Plattsburg
DonCarlos, James Robert.....	339 S. Missouri, Liberty
Drenon, Loren Albert.....	Warsaw
Duncan, Bert Logan.....	Corso
Duncan, Fields M.....	Liberty
Engel, Ruth Mildred.....	516 W. Franklin, Liberty
Farnsworth, Louise.....	300 E. Franklin, Liberty
Finch, Martha Marie.....	Doniphan
Fugitt, Ella Maxine.....	Holt
Fullerton, Harvey Reed.....	114 E. Ruby, Independence
Glasscock, Cecil Lourene.....	Avondale
Goyne, Ida Clarinda.....	236 Walnut, Ashland, Pa.
Grosch, Eugene Pinkham.....	4953 Forest, Kansas City
Haas, Melvin Bryant.....	2124 Central, Bethany
Halbrook, James Rudolph.....	Salem
Hale, Hazel Marie.....	455 South, Springfield
Hall, George Thomas.....	Liberty
Hammond, Ardath Elba.....	Harris
Hardin, Elender Hoyle.....	205 E. Clay, Albany
Hennon, Robert Mansel.....	4961 Lotus Ave., St. Louis
Hilliard, Edythe Mae.....	819 W. College, Independence
Hilton, Richard Clare.....	Hardin
Hinkle, Waive Oleta.....	412 Choctaw, Liberty
Hintz, August McCurdy.....	Route 3, LaMonte
Hockett, Alice Dixon.....	118 Gordon, Liberty
Holley, Earl William.....	Warsaw
Hood, Wayne Leland.....	4541 Wornall Road, Kansas City
Hoover, Martha Evaline.....	Liberty
Huntington, Ruth Gertrude.....	Liberty
Irick, Cecil Wesley.....	249 West Mill, Liberty
Jessee, Randall Smith.....	Route 1, Excelsior Springs
Johnson, Homer E.....	Briggsdale, Colo.
Jones, Francis Lloyd.....	5924 Paseo, Kansas City
Koch, George B., jr.....	462 E. Franklin, Liberty
Koch, Mary Anna.....	462 E. Franklin, Liberty
Lemen, Nina Jewel.....	1816 E. 67th St., Kansas City
Long, Loretta Belle.....	538 E. Mill, Liberty
McDougall, Margaret Innis.....	519 W. Franklin, Liberty
McGraw, Frances Lee.....	205 S. E. St., California
McGuire, Thomas Lafayette.....	Buntyn Sta., Box 63, Memphis, Tenn.

Magruder, Norvin Burnett.....	S. 1st, Odessa
Major, Med Louise.....	Smithville
Mallory, Alice Loree.....	Liberty
Merritt, Charles LeRoy.....	518 S. Ault, Moberly
Metcalfe, Clarence Cecil.....	143 S. White, Kansas City
Mitchell, Henry Griebel.....	414 N. Pleasant, Independence
Moon, Thomas Staples, jr.....	303 Madison, Cleburne, Texas
Moore, Charles J.....	Lathrop
Moore, Jack Allen.....	2311 Wall, Joplin
Moorehead, Andrew Scott.....	1039 Chipeta, Grand Junction, Colo.
Morriss, Harriet S.....	Archie
Morse, Ben Whitney.....	Excelsior Springs
Mosby, John Nicholas.....	417 E. Franklin, Liberty
Mueller, Lenora Louise.....	2012 Gentry, North Kansas City
Mullins, Dorothy Marguerite.....	Princeton
Murphy, James Emmett.....	Laredo
Palmer, Judson Lee, jr.....	918 E. Armour, Kansas City
Parker, Paul LaVelle.....	Polo
Plummer, Philip Rea.....	Route 2, Turney
Poff, Violet Florence.....	2109 Erie, North Kansas City
Pratt, LeRoy George.....	1019 E. 3rd St., Sedalia
Raccuglia, Phillip Peter.....	931 E. 11th St., Kansas City
Randall, Lucille Elizabeth.....	701 N. Delaware, Independence
Realing, Herbert A.....	420 Madison, Macon
Robb, John Roscoe.....	124 High St., Liberty
Robinson, Vyra Alice.....	Raytown
Ruhling, Madeline Audrey.....	1400 W. Van Horn, Independence
Ruhling, Vera Edna.....	1400 W. Van Horn, Independence
Ryan, James Mallory.....	Warsaw
Salisbury, Glenna Harriet.....	625 S. Crysler, Independence
Schaefer, William Gaerman.....	604 E. 71st Ter., Kansas City
Sears, Mary Evelyn.....	611 N. Morse, Liberty
Seward, John R.....	6207 McGee, Kansas City
Sharrah, Paul Chester.....	1411 Broadway, Chillicothe
Shaw, Jesse Washington.....	3203 Sullivan, St. Louis
Smith, Carl Willard.....	730 College, Liberty
Smith, Charles Lowell.....	Raytown
Smith, David Arthur.....	110 S. Park, Independence
Smith, James Marion.....	1043 Montie Road, Lincoln Park, Detroit, Mich.
Smith, James Oscar.....	Route 4, Odessa
Sodeman, Lowell Frazier.....	Morse Ave., Liberty

Stouffer, Earl C.....	107 E. Wood Ave., Norborne
Sumner, Everett Monroe.....	Bosworth
Thompson, Paul William.....	125 N. Leonard, Liberty
Thorpe, Marjorie Diana	304 N. Delaware, Independence
Trotter, Harry Lewis.....	606 N. Main, Carrollton
Truex, Dorothy Adine.....	116 N. Water, Liberty
Vaughn, Louise Helen.....	Blue Springs
Wagoner, Gordon Arthur.....	711 Marietta, Excelsior Springs
Wallace, James Crawford.....	Hill Crest Apts., Liberty
Warren, Ola Marie.....	521 Harrison, Liberty
Wheat, Zackariah Davis.....	4046 Central, Kansas City
White, George Griffith.....	Eagle, Colorado
Wiegner, Hillis A.....	606 W. Jefferson, Memphis
Williams, David Homer.....	S. Main, Excelsior Springs
Wilson, Robert P. C.....	Platte City
Wise, George Warren.....	637 Remington, Fort Collins, Colo.
Wood, John Henry.....	Route 2, Box 24, California
Wray, Purna Howard.....	Fairfield
Wyble, Helen Virginia.....	Royal Hotel, Excelsior Springs
Yankee, Mary Anne.....	2215 Harvard, Independence

44 Women, 87 Men

UNCLASSIFIED STUDENTS 1932-33

Arnold, Leah Roger.....	Liberty
Benson, George Edward, jr.....	211 E. 13th St., Mission, Texas
Carlin, Opal R.....	Monett
Churchill, Helen Mar.....	1210 Ohio, Lawrence, Kansas
Downing, Mrs. J. L.....	106 Moss, Liberty
Jennings, Jack	400 Roberta, Moberly
Jones, Marie	Smithville
Means, Flo G.....	Liberty
Rathmann, Julius Carl.....	4933 Devonshire, St. Louis

6 Women, 3 Men

SUMMER SCHOOL, 1932

Albright, Mable Bernita.....	216 S. Jewell, Liberty
Allen, Mrs. Irene.....	409 S. Shaw, Richmond
Allen, James Francis.....	409 S. Shaw, Richmond
Allen, Mae Belle Allene.....	109 Dorsey Ave., Liberty
Allen, Mrs. Olive Emily.....	Route 1, Hickman Mill

Allen, Roy Bartlett.....	Rothville
Anderson, Julian.....	20 Terrace, Liberty
Ash, Russell.....	Cordell, Oklahoma
Ayers, Alma Kate.....	24th and Hedges, Independence
Barr, Raymond U.....	302 S. Elmwood, Kansas City
Bell, Gertrude Wood.....	16 Fairview, Liberty
Billings, Heywood Sherman.....	20 Crystal Ave., Crystal City
Blackburn, Marguerite Eglentyne.....	Route 4, Independence
Blackwell, Mary Alberta.....	Vibbard
Blain, Bernard Edwin.....	321 W. Kansas, Liberty
Blessing, Tracy LeRoy.....	New Hampton
Blythe, John Daniel.....	Clinton
Boswell, Howard Nelson.....	S. Main, Liberty
Bowman, Layton.....	Route 2, Pierce City
Bram, Helen Elizabeth.....	Denver
Brown, Edward Benjamin.....	Columbia
Brown, Roy Franklin.....	405 N. Spring, Independence
Brueckmann, Lillian Mildred.....	1514 E. 49 St. Terrace, Kansas City
Carmean, Bertha Mae.....	Blackburn
Carmichael, James William.....	Odessa
Carter, Newton.....	710 Sloan, Crawfordsville, Ind.
Chiles, Lutie Thornton.....	Independence
Clark, Ben C.....	133 Lincoln, Liberty
Clark, Helen Ann.....	434 N. Thornton, Richmond
Clark, Ray Albert.....	949 Minnesota, Kansas City, Kansas
Cochrane, Theodore.....	Liberty
Cowherd, Raymond Gibson.....	4004 Park, Kansas City
Cox, Ella Frances.....	417 E. Mississippi, Liberty
Crismon, Ruth.....	Meta
Crossett, Wilma Wilson.....	Excelsior Springs
Darnell, Thomas F. B.....	Olathe, Kansas
Downing, Mrs. J. L.....	106 Moss, Liberty
Ely, Robert J Verne.....	7341 Ward Parkway, Kansas City
Endicott, Betty Lee.....	Orrick
Ficklin, Emma Lee.....	2703 Patee, St. Joseph
Forbis, Homer Lewis.....	628 1-2 Barry, Chicago, Illinois
Fox, Beulah Edith.....	1805 Jefferson, Kansas City
Fromm, Emanuel.....	Topeka, Kansas
Gillmor, William Lincoln.....	534 Arlington, Kansas City
Griffis, Edna Louisa.....	1263 Lowell Ave., Kansas City, Kansas
Hall, John Matthew.....	45 Fremont Ave., New York City

Hamilton, Garvin Vernon.....	2 W. 52nd, Kansas City
Hardaway, Floyd Luther.....	Jasper
Hardesty, Lois.....	Nashua
Hastings, Rayburn Beeson.....	708 Magnolia, Excelsior Springs
Heller, Bernard Marcus.....	323 Ward Parkway, Kansas City
Helton, John Wayne.....	Cainsville
Hendrex, Orien Bradford.....	Liberty
Hepler, Kathryn Elizabeth.....	Liberty
Hinkle, Alice Carolyn.....	221 Jefferson, Liberty
Hirni, Paul Raymond.....	Rockville
Hulse, Frances Kathryn.....	Smithville
Jansen, Whitney C.	468 S. Indiana Ave., Kankakee, Illinois
Jennings, Cyrena Belle.....	1219 N. 9th, St. Joseph
Jennings, Hazel Ione.....	Marble Hill
Johnson, Louis Albert.....	80th & State, Kansas City, Kan.
Jones, Marie.....	Smithville
Kerr, Mrs. Marie E.....	Smithville
Kreis, Gertrude Dorothy.....	Mendota, Illinois
Lee, Charles Lloyd.....	Grubville
Lee, Harry Lightfoot.....	422 W. Van Horn, Independence
Leopold, Margaret Reed.....	Route 1, Independence
Lewis, Howard Hadley.....	Route 1, Florence
Maddox, Florence Mildred.....	112 S. Havana, Butler
Majors, Frederick Louis.....	Pierce City
Markwell, Mrs. Ione Thompson.....	Nashua
Masters, Herbert Oliver.....	3306 E. 14th, Kansas City
McKee, Woodrow R.	Polo
Miller, Helen Gould.....	Liberty
Newman, Goldie Catherine.....	Trimble
Norris, Fern Nancy.....	Russell Ave., West Lafayette, Ohio
Oldfield, Clarence LeRoy.....	1018 Pioneer, Turlock, Calif.
Payne, Edna Harmon.....	Liberty
Payne, Zena Elizabeth.....	Liberty
Peebles, Harvey S.....	Crystal City
Pielstick, Don F.....	Liberty
Poloson, Nicholas.....	3313 Michigan Ave., East Chicago, Indiana
Rathmann, Anna Louise.....	4933 Devonshire, St. Louis
Rathmann, Julius Carl.....	4933 Devonshire, St. Louis
Reynolds, Gilbert Hewitt.....	Maysville
Robb, Margaret Ellen.....	623 Kansas, Liberty
Rowland, Anna Augusta.....	250 S. Lightburne, Liberty

Rule, Alice.....	Smithville
Sears, Mary Evelyn.....	611 N. Morse, Liberty
Sharp, David Addison, jr.....	202 W. Franklin, Liberty
Smith, Anna Margaret.....	9 West Pine, Butler
Stephens, Genter Leroy.....	424 Wilson, Liberty
Stevenson, Gladys Mae.....	Liberty
Sympson, R. W.....	Edgerton
Tanner, Aurelia May.....	508 N. College, Richmond
Van Trump, Susan Frances.....	152 S. Leonard, Liberty
Vaughn, Agnes Lavinia.....	Blue Springs
Vaughn, Meta.....	Blue Springs
Vehmann, Florence Irene.....	Hartville
Walser, Alvin Glenn.....	Holt
Walters, Maurine A.....	Cowgill
Webb, Kathrene Kling.....	Excelsior Springs
Weidman, Gilbert Lewis.....	Garden City
Whitsitt, Earl Clifford.....	439 Missouri, Liberty
Wilson, Vida.....	408 S. Leonard, Liberty
Wright, Esther May.....	10913 E. 15th, Independence
Young, Forrest Luke.....	132 N. Lightburne, Liberty

54 Women, 53 Men

EXTENSION DEPARTMENT

Kansas City-Western Dental College

Under the Supervision of Allen J. Moon, Dean

FACULTY

Roy James Rinehart, D. D. S., F. A. C. D., Dean

Professor of Crown and Bridge Work

Claire Stephen Hann, A. B. (Park College) A. M., (Michigan U.)

Professor of Comparative Dental Anatomy

Instructor in Biology

Forrest W. Huntington, A. B., A. M., (Kansas U.) D. D. S.

Professor of Chemistry, Metallurgy and Physics

Claude Wilson O'Dell, B. S., (S. T. C. Pittsburg, Kansas) D. D. S.

Instructor in Comparative Anatomy

Carl Chapman, B. S., (C. Mo. S. T. C.)

Instructor in Psychology

Raymond Orval Beauchamp, B. S., (University of Arkansas)

Instructor in Biology

Roll of Freshmen in Kansas City—Western Dental College

Arnold, N.	915 Walnut, Newton, Kansas
Bartlett, D.	Bird City, Kansas
Bishop, D. K.	316 Republic Building, Denver, Colo.
Boon, D.	910 Home Ave., Kansas City
Brown, E. I.	Savannah
Browning, W. C.	Deepwater
Carlson, K. W.	Route 4, North Topeka, Kansas
Cash, C. B.	4232 Chestnut, Kansas City
Clark, R. H.	1410 E. 65th St., Kansas City
Clond, K.	1519 E. 42nd St., Kansas City
Corey, A. O.	Council Grove, Kansas
Cressler, E. P.	223 E. 8th St., Newton, Kansas
Divine, H. G.	State Hospital, Topeka, Kansas
Embry, M.	Hickory
Fulton, A. E.	156 N. Hillside, Wichita, Kansas

Gilbert, H. M., jr.....	2117 E. 59th St., Kansas City
Halbert, W. H.....	2419 W. 5th St., Little Rock, Arkansas
Halquist, V. E., jr.....	4922 Baltimore, Kansas City
Harding, J. Y.	616 N. Maguire St., Warrensburg
Hill, G. M.	623 S. Maple, McPherson, Kansas
Jacobs, G. W.....	303 Barnes Building, Muskogee, Okla.
Koerber, M. A.....	552 W. 3rd St., Hoisington, Kansas
Laurenzana, A. L.....	428 S. White Ave., Kansas City
Leslie, G. E.	Russellville
Lewis, E. S., jr.....	Lordsburg, New Mexico
McCreary, J.....	Route 1, Emporia, Kansas
McGowan, A. O., jr.....	316 N. 15th St., Kansas City
McKinley, O. V. B.	933 Euclid, Tucson, Arizona
Maineschein, E. H.....	315 N. Lawn, Kansas City
Miller, C. W.....	325 N. 7th St., Arkansas City, Kansas
Milstein, J.	1245 Eastern Parkway, Brooklyn, New York
Moore, S. H.....	1201 N. 13th St., Ft. Smith, Arkansas
Ogilvie, G. jr.....	1743 S. Wheeling, Tulsa, Okla.
Petersen, W. R.....	703 Montgomery St., Chillicothe
Redfield, M.	Bucklin, Kansas
Russell, J. E.....	1621 Prince, Conway, Arkansas
Savage, H. A.....	333 Bronk St., Monte Vista, Colo.
Schaefer, E. E.....	118 E. 7th St., Leadville, Colo.
Schweers, R. F.	726 N. Union St., Independence
Sharp, W. E.....	Craig
Stone, K. M.	1804 Cheyenne Blvd., Colorado Springs, Colo.
Stutznegger, C. M.....	203 N. Redwood Road, Salt Lake City, Utah
Stutznegger, R. D.....	203 N. Redwood Road, Salt Lake City, Utah
Summers, F. W.	Waterville, Kansas
Tate, O. B.	Heavener, Okla.
Varns, H. S.	Center, Colo.
White, R. M.....	104 W. 8th, Hutchinson, Kansas
Wilson, S. T.	118 Clinton Place, Kansas City
Wyche, J. M.....	Buckner

Summer School, 1932, Kansas City-Western Dental College

Ahrens, P. K.....	Basin, Wyoming
Baker, R. W.	240 E. 24th St., Tulsa, Okla.
Berkowitz, R.....	5801 Oak St., Kansas City
Brennan, E. T.....	St. Marys, Kansas
Brooner, N. L.....	Wellington, Kansas

Burket, J. F.....	345 N. Douglas, Kingman, Kansas
Carroll, J. P.....	4021 Troost Ave., Kansas City
Fasbinder, S. M.....	1456 40th Street, Brooklyn, New York
Hannah, Daisy.....	147 S. Kensington, Kansas City
Henning, F. E.....	916 Grimes St., McPherson, Kansas
Kimes, H. G.....	Cameron
Lyon, L. R.....	601 E. 5th, Newton, Kansas
McAdow, W. B.....	1272 Van Buren, Topeka, Kansas
McInturff, A. L.....	432 E. 71st St. Terrace, Kansas City
Meador, M. A.....	740 East 6th St., Tucson, Arizona
Moyer, G.....	3532 Montgall, Kansas City
O'Bryon, J. E.....	1109 Ohio St., Lawrence, Kansas
Oken, Leo.....	2527 Prospect Ave., Kansas City
Schuman, C.....	Route 1, El Dorado, Kansas
Sloop, G.....	Effingham, Kansas
Trigg, J. R.....	4903 Northland Place, St. Louis
Webster, S. F.....	5 Waldron St., Hillsdale, Michigan

RESIDENCES

Missouri.....	320
Colorado.....	9
Kansas.....	9
Iowa.....	7
Oklahoma.....	5
California.....	4
Illinois.....	3
Michigan.....	3
Nebraska.....	3
Wyoming.....	2
Wisconsin.....	2
Pennsylvania.....	2
Texas.....	2
Arkansas.....	1
Tennessee.....	1
Indiana.....	1
S. Carolina.....	1
Japan.....	1
New York.....	1
New Jersey.....	1
Washington.....	1
Total.....	379

SUMMARY OF COLLEGE STUDENTS

Seniors.....	66
Juniors.....	68
Sophomores.....	105
Freshmen.....	131
Unclassified.....	<u>9</u>
Total.....	379
Summer School, 1932.....	107
Kansas City-Western Dental College summer school.....	22
Kansas City-Western Dental College.....	49
GRAND TOTAL.....	557

GIFTS AND BEQUESTS

Gifts and bequests of money, securities or real estate are gratefully received by William Jewell College. Many additions have thus been made to the resources of the institution.

To serve the college in this way it is not necessary to make a large bequest. There are doubtless many who without injury to family or other interests could bequeath \$500, \$1,000, \$5,000; and some who might bequeath a much larger sum.

A will, in order to be valid in most states, must be signed by the testator in the presence of at least two disinterested witnesses who should attest the instrument as such witnesses. Three witnesses are preferable and in all states sufficient. It is advisable to ascertain the requirements of the law in the state in which the testator resides, and to be careful that such requirements are complied with.

FORM OF GENERAL BEQUEST

I hereby give and bequeath to "The Board of Trustees of William Jewell College," situated at Liberty, Clay County, Missouri, and to their successors forever, for the use of said institution in fulfillment of its general corporate purpose

.....
(State here the sum of money desired to be given or describe the property or securities constituting the bequest.)

FORM OF BEQUEST FOR A PARTICULAR PURPOSE, DESIGNATED BY THE TESTATOR

I hereby give and bequeath to "The Board of Trustees of William Jewell College," situated at Liberty, Clay County, Missouri, and to their successors, forever, in trust the sum of

.....
(State here the sum of money desired to be given or describe the property or securities constituting the bequest.)

to be used as follows:

.....
(Indicate here whether the gift is to be used for endowment, buildings, or current expenses.)

ANNUITIES

William Jewell College accepts sums of money from \$500 upward on the annuity basis, paying interest thereon during the life of the donor. The plan has distinct advantages. The donor has the satisfaction of having aided a worthy cause. At the same time he receives an income from the gift during his life. This income is usually larger than could be obtained through other secure investments. The safety of the principal is absolutely assured. The donor is assured also of the fulfillment of his own precise wish in the matter of the disposition of the gift. Finally when the recipient or recipients of the annuity payments have passed on, the principal continues its work, permanently providing income for the needs of the institution. The giver "though being dead, yet speaketh."

Correspondence regarding annuity gifts is solicited, and will receive the prompt attention of the president.

OTHER FORMS

TESTAMENTARY TRUST

Bank or Trust Company, as Trustee*

In pursuance of the resolution and declaration of trust known as The Uniform Trust for Public Uses adopted by the
.....
 (Here insert the name of the bank or trust company to act as trustee) on the.....day of.....19....,
 (The correct date must be inserted) and upon the terms and conditions therein expressed I give (devise) and bequeath to said corporation and its successors forever the sum of
 dollars (or otherwise describe the gift) to be held and administered as a charitable trust (If desired add: in memory of.....
by whose name the fund shall be known) to collect and pay over or apply the income arising therefrom to "The Board of Trustees" of William Jewell College situated at Liberty, Clay County, Missouri, for the general corporate purpose of that institution (or name a particular corporate purpose)§.

LIVING TRUST

Bank or Trust Company, as Trustee*

THIS INDENTURE made thisday of.....
19...., by and between.....

of.....hereinafter referred to as the donor and.....
(Here insert the name
 of the bank or trust company to act as trustee) hereinafter referred to as
 the trustee,

WITNESSETH:

That said donor desiring to dedicate certain funds to public usefulness
 has this day given and in consideration of the covenants and agreements here-
 in contained hereby gives, grants, conveys, and delivers to said trustee and its
 successors forever, and the said trustee for itself and its successors accepts the
 following securities, money, and property with proper supplemental transfers
 where necessary to pass title, viz.:.....
(Here enumerate or refer to schedule
 attached) and agrees to accept approved additions thereto and to hold and
 administer such gift or gifts as a charitable trust under the resolution and
 declaration of trust known as The Uniform Trust for Public Uses adopted by
 said trustee on the.....day of.....19.....,
 to collect and pay over or apply the income arising therefrom to "The Board
 of Trustees" of William Jewell College, situated at Liberty, Clay County,
 Missouri, for the general corporate purposes of that institution (or name a
 particular corporate purpose)¶.

(Here may follow a reservation of income for life, a power to re-
 voke, or other clause having approval of counsel.)

In Witness Whereof, the donor aforesaid has subscribed and delivered
 these presents and the said trustee has by its proper officer executed the same
 and received the same money, securities, and property the day and year first
 above mentioned.

.....Donor.

IN PRESENCE OF

.....Trustee.

(Bank or Trust Company)

By.....

*Note: While any form of charitable trust that conforms to legal
 requirements will suffice, the use of these forms is recommended when-
 ever practicable.

¶Note: If the trust is not to be perpetual, continue after the
 words "for its general corporate purposes" with the following words
 or some modification thereof having approval of counsel as for ex-
 ample:

"until in the opinion of its governing board, after.....years from the date of my death (*or other date*) its best interests shall require an expenditure of some part of the capital of the trust and then to apply or expend such portion (not to exceed.....per cent) thereof in such sums and for such corporate purposes as said governing board shall from time to time direct."

Additional information will be furnished upon request, including the names of banks and trust companies wherever located acting as trustees under the above mentioned instrument. If desired other forms will be furnished including those naming the college as trustee for itself.

Inquiries regarding contributions, gifts or bequests in any form or amount will be welcomed by the college authorities. Correspondence should be addressed to President John F. Herget.

INDEX

Administration.....	4	Equipment	13
Admission.....	22	Examinations.....	25
Alumni Association.....	81	Extension Department.....	112
Annuities.....	117	Faculty.....	5, 112
Board and Room.....	18, 84	Fees.....	17
Board of Trustees.....	4	General Regulations.....	25
Buildings and Grounds.....	13	Gifts and Bequests.....	116
Calendar.....	2, 3	Grades.....	25
Chapel Attendance.....	27	Gymnasium.....	14
Choosing a College.....	11	Historical Sketch	9
Class Attendance.....	26	Honor Points	25
Committees of Faculty.....	8	Incomplete Work	26
Co-operative Book Store.....	16	Late Enrollment.....	18, 22
Correspondence.....	26	Library.....	15
Cost of Attending.....	17, 18	Location.....	9
Courses of Study.....	30ff	Loan Funds.....	19
Astronomy.....	59, 65	Majors and Minors.....	24, 88
Bible.....	30	Melrose Plat.....	82
Biology.....	32	Museum.....	13
Chemistry.....	35	New Ely Hall Plat.....	83
Dramatics.....	47	Numbering of Courses.....	30
Economics.....	38	Other Forms.....	117
Education.....	39	Our Aim.....	12
Engineering Drawing.....	48	Penalties for Absences.....	27
English.....	43	Pre-professional Courses.....	27ff
French.....	66	Prices for Rooms.....	84
Geology.....	49	Prizes.....	21
German.....	67	Reduced Tuition.....	18
Greek.....	49	Refunds	18
History.....	51	Requirements for	
Hygiene and Sanitation.....	72	Graduation.....	22, 24
Latin.....	57	Residence Requirements.....	24
Mathematics.....	59	Rooms.....	18
Modern Languages.....	65	Schedule.....	85
Music.....	69	Scholarships.....	19, 20
Philosophy.....	70	Self Help.....	19
Physical Education.....	71	Standing of William Jewell.....	12
Physics.....	72	Student Activities.....	79
Political Science.....	75	Student Conduct.....	26
Sociology.....	76	Student Enrollment.....	99
Spanish.....	68	Summer School.....	91
Classification of Students.....	25	Tuition.....	17
Degrees.....	23	William Jewell Press	16
Degrees Conferred, 1932.....	97		
Dormitory.....	14		
Dental School.....	112		
Dormitory Regulations.....	21		
Entrance Requirements.....	22		

Senior Class Day



William Jewell College



The John Gano Memorial Chapel



Wednesday, May 2, 1934

10:15 A.M.

Program



“Trust in God and Work”

HYMN—*Holy, Holy, Holy*.....Number 93

SENIOR PROCESSIONALDorothy Wickstrom
(Audience remain standing during processional)

INVOCATION.....Rev. Geo. W. Sadler

SELECTIONGirls' Quartette

CLASS PROMOTIONS

EXEUNT

The 1934 Graduating Class



CLASS OFFICERS

PRESIDENT.....	Russell Ash
SECRETARY-TREASURER.....	Vera Hume
CHAIRMAN PROGRAM COMMITTEE.....	Elinor Rapson

Millicent Rue Adams
A. Russell Ash
Helen Audsley
Clifford Earl Bittle
Robert Lee Bollinger
Georgia Bessie Bowman
Roger Louis Byler
J. Marvin Caldwell
Amos B. Christian
Leslie Guy Christian
Paul Tyson Crose
William E. Davis
Wilfred Scott Dawson
Dorothy Mary Dunn
Edna May Ennis
James William Farris
Bernard Arthur Fightmaster
Beulah Edith Fox
John H. Godfrey
J. Hurley Hagood
George Everett Hammon
Geneva May Hanback
Vera Lee Hume
Chase Willis Jennings
Earl Jefferson Long, jr.
Lee Baker Long
Arthur Linden Maddox
Mildred Peace Mason

Herbert Oliver Masters
Shad T. Medlin
James Kenneth Neal
William Lee Owen
Alice Per Lee
Don Franklin Pielstick
Margaret May Pielstick
Nicholas Long Poloson
Eugene Talmadge Pratt
Donato Ruiz Ramirez
Elinor Ann Rapson
William Oscar Roark
Beecher Bowman Shrum
Berry Wall Stanley
Walter Bruce Summers
William Russell Sutton
Arthur Thompson
Marvin Earl Utter
Shirley Ellen Vawter
Alvin Glenn Walser
Paul Weber
Nellie Ernestine Whaley
Henry Ward Wiley
Edgar Alfred Williams
John Henry Williams
Esther May Wright
Forrest Luke Young

Welcome to
Baccalaureate Services
of
William Jewell College
Liberty, Missouri

Baccalaureate Sermon
President John F. Herget

Baptist Church - - - *10:45 a. m.*

Missionary Sermon
The Rev. E. H. Clark

Baptist Church - - - *7:30 p. m.*

Sunday, May 27, 1934

Baccalaureate Program

Baptist Church

Liberty, Mo.

10:45 a. m.

Dr. J. C. Armstrong, Presiding

Processional—March.....Mendelssohn

Invocation.....Dr. G. W. Sadler

Hymn 34—O Worship the King

Scripture Lesson.....Dr. Holt Smith

Prayer.....Prof. U. R. Pugh

Anthem—Hark, Hark my Soul.....Shelley

Hymn 108—When I Survey the Wondrous Cross

Offertory—Morning.....Grieg

Solo—Fear Not Ye, O Israel.....Buck
Mrs. John F. Herget

Sermon—"An Understanding Heart"..President John F. Herget

Hymn 249—Faith of Our Fathers

Benediction.....Dr. F. M. Derwacter

PostludeTours
Mrs. E. L. Black, Organist

USHERS

Lon Sutherland, Head Usher

James Davidson
Wilson Brown
Chester Coen
Lucille Hall

Arthur Robertson
Melvin Thompson
Robert Lyon
Dorothy Wickstrom

Missionary Service

Baptist Church

Liberty, Mo.

7:30 p. m.

Dr. H. I. Hester Presiding

Organ Prelude—*Gothic Cathedral*Powell Weaver

Hymn 261—*We've a Story To Tell*

Scripture ReadingDr. John F. Herget

PrayerDr. George W. Sadler

Hymn 264—*O Zion, Haste*

Offertory—*Evening Song*Krentzer

Announcements

Quartet—*Come Unto Me All Ye That Labor*Pears

Sermon.....The Reverend E. H. Clark

Hymn 260—*Jesus Shall Reign*

Benediction.....Dr. F. M. Derwacter

PostludeVolkman

Mrs. E. L. Black, Organist

THE QUARTET

Miss Mildred Bruner

Mr. Edgar Williams

Miss Nadine Haley

Mr. Marvin Utter

USHERS

John Crutchfield, Head Usher

Frances McGraw

Paul Kirkpatrick

Emma Payne

Milan Thompson

Marguerite Mullins

Paul Mansfield

Commencement Week Events

Class of 1909 Reunion Breakfast

*Monday, May 28, 8:00 a. m. New Ely
Dining Hall. Also other classes.*

Alumni Address

*W. M. Westbrook, Marshall, Missouri.
Monday, May 28, 10:30 a. m. Gano Chapel.*

Alumni Banquet

*Monday, May 28, 12:30 p. m. New Ely
Dining Hall.*

Trustees' Meeting

*Monday, May 28, 2:30 p. m. President's
Home.*

Senior Play

*"Mary the Third". Monday, May 28, 8:00
p. m. Gano Chapel.*

Commencement Address

*The Reverend Elmer A. Love. Mt. Vernon,
New York. Tuesday, May 29, 10.00 a.m.
Gano Chapel.*